



MARATHON COUNTY METROPOLITAN PLANNING COMMISSION'S BICYCLE & PEDESTRIAN SUB-COMMITTEE AGENDA



Date & Time of Meeting: **Thursday, April 9, 2026, at 1:00pm**

Meeting Location: **Wisconsin Room, 1000 Lake View Drive, Wausau, WI 54403**

Members: John Beatty, Eric Donaldson, Carrie Edmondson, Jami Gebert, Darryl Landeau, Dave Meuret, Mark Thuot, Ryan VanDeWalle, Tim Vergara, Hooshang Zeyghami, Aaron Anklam, Laurie Miskimins

The meeting site identified above will be open to the public. Instead of in person attendance, Bicycle & Pedestrian Sub-Committee members and the public may attend this meeting by telephone and video conference. **Persons wishing to attend the meeting virtually may call into the telephone conference beginning five (5) minutes prior to the start time indicated above using the following number:**

PHONE NUMBER: 1-408-418-9388

ACCESS CODE: 2488 427 8963


Please Note: If you are prompted to provide an "Attendee Identification Number" press the # symbol. No other number is required to participate in the telephone conference.

When you enter the telephone conference, **PLEASE PUT YOUR PHONE ON MUTE!**

- 1. Call Meeting to Order**
- 2. Approval of Minutes: March 5, 2026, Bike/Ped Sub-Committee Meeting**
- 3. Educational Presentations and Committee Discussion**
 - A. Wausau MPO Pedal Passport Update
 - B. E-Bicycle Model Ordinance
 - C. Bicycle Map Update
 - D. Call for Bike Month Events
 - E. Bicycle Friendly Community (BFC) Application
 - F. Bike/Ped Counters
 - G. Safe Streets & Roads for All (SS4A)
 - H. IRONBULL – COR Trail
 - I. Updates/Comments from Committee Members
- 4. Next Meeting Date & Time, Announcements, and Future Agenda Items**
 - A. Next Meeting Date & Time – Thursday, May 7, 2026, at 1:00pm
 - B. Future Agenda Items – TBD
- 5. Adjournment**

Any person planning to attend this meeting who needs some type of special accommodation to participate should call the County Clerk's Office at 715-261-1500 or email countyclerk@marathoncounty.gov one business day before the meeting.

EMAILED TO: Courthouse, WDH, City Pages, and other Media Groups
EMAILED BY: AA
DATE: 4/2/2026
EMAIL TIME: 12:00pm

SIGNED: 
PRESIDING OFFICER OR DESIGNEE

NOTICE POSTED AT COURTHOUSE:

BY: _____
DATE & TIME: _____



**MARATHON COUNTY METROPOLITAN PLANNING COMMISSION'S
BICYCLE & PEDESTRIAN SUB-COMMITTEE MEETING MINUTES
March 5th, 2026**

Meeting Attendance: Aaron Anklam, MaKayla Galecki (Wausau MPO Staff); Amanda Ostrowski (Marathon County Health Department), Mark Thuot (City of Schofield), Carrie Edmonson (City of Wausau), John Beatty (Village of Rib Mountain), Jamie Gerbert (Village of Weston), Hooshang Zeyghami (Village of Weston) Darryl Landeau (NCWRPC), Eric Donaldson (Village of Kronenwetter), William Bertram (Greater Wausau Prosperity Partnership), Ryan VanDeWalle (Village of Rothschild)

1. Call Meeting to Order

In the presence of a quorum, with the agenda being properly signed and posted, the meeting was called to order by Aaron Anklam at 1:05 p.m. in the Wisconsin Room, 1000 Lake View Drive, Wausau, WI 54403 and virtually via WebEx.

2. Approval of Minutes: February 5, 2026, Bike/Ped Sub-Committee Meeting

Action: Motion/Second by Edmondson/Zeyghami to approve February 5, 2026, MPO Bike/Ped Minutes. Motion carried by voice vote, no dissent.

3. Educational Presentations and Committee Discussion

A. Wausau MPO Bicycle & Pedestrian Plan- Project Discussion

Discussion: The committee reviewed the current project list and discussed completed and planned projects. Anklam noted the plan is due for a major update, as the last full revision occurred in 2014, and requested members identify projects to be included in the update. Members raised concerns regarding municipal awareness of the existing plan and emphasized the need for improved connectivity. Suggestions included establishing project priorities or criteria to assist with future TAP allocations and reviewing other MPO bicycle and pedestrian plans for reference. Clarification was provided that the update would encompass the full plan, not only the project list. The group agreed on the value of developing project criteria, and members were asked to review the list and identify completed or obsolete projects.

B. E-bicycle Model Ordinance

Discussion: Anklam summarized the single edit made in the latest draft and requested community feedback. Rothschild expressed support with no additional comments, while Schofield indicated they were not interested in adopting the ordinance. Edmondson reported strong support from her bicycle and pedestrian group and requested additions such as specifying one-wheels under EMOTOs and clarifying that no driver's license is required. Weston also supported the ordinance and emphasized involving police departments. Rib Mountain preferred aligning with state statutes and improving signage. Anklam noted that support varies by community. Edmondson stated they would proceed regardless, with motions of support noted. Anklam requested Edmondson's list of changes, with further discussion planned for April where the MPO will continue to serve as a discussion platform for the municipalities.

C. Bicycle Map Update

Discussion: Galecki provided an update on the upcoming map, which will include municipal routes, MPO Bike Routes, and off-road cycling facilities. The map will also feature a Bicycle Passport layer

MARATHON COUNTY METROPOLITAN PLANNING COMMISSION – Bicycle & Pedestrian Sub-Committee

showing passport stops and available amenities such as bike parking, drinking water, and restrooms. Staff are continuing to work toward release in May for Bike Month. Clarifying questions were posed regarding the passport.

D. Wisconsin Bike Fed, Education Opportunities

Discussion: Galecki reviewed information from the previous meeting and noted that class registration is now available, with links provided in the meeting packet. The committee is awaiting a social media toolkit from the Wisconsin Bike Fed for broader community outreach; this will be distributed via email once received. Members discussed interest in specific courses, including Cycling Without Age, and sought clarification on whether the offerings are free.

E. Updated/Comments from Committee Members

Discussion: Zeyghami notes that Evergreen Elementary built a bike park.

4. Next Meeting Date & Time, Announcements, and Agenda Items for Next Meeting Date

A. Next Meeting Date and Time – Thursday, April 9, 2026, 1:00pm

B. Future Agenda Items – BFC Application, Bike Month Activities, Bike Map, Pedal Passport, Bike Counters. Members are asked to bring items for discussion.

5. Adjournment

Action: There being no further business before the members, Motion/Second by Beatty/Hooshang to adjourn the meeting of the Marathon County Metropolitan Planning Commission Bicycle and Pedestrian Sub-Committee at 1:54 p.m. Motion carried by voice vote, no dissent.

Submitted by:
Aaron Anklam, Transportation Planner
Wausau MPO
Marathon County Conservation, Planning and Zoning



Bicycle Friendly Community (BFC) Network Worksheet

Can be downloaded by clicking here:

https://bit.ly/BFC_2026_B14

Safe Streets & Roads for All (SS4A)

Can be viewed by clicking here:

<https://www.transportation.gov/grants/SS4A>



FINAL DRAFT Model E-Bike Ordinance

For Adoption by Municipalities within the Wausau Metropolitan Planning Organization (MPO) Region

This ordinance is intended to serve as a model ordinance that individual jurisdictions may adopt and modify to meet local needs.

This model ordinance was developed with input from the Wausau MPO Bike/Pedestrian Sub-Committee members to promote regional consistency while allowing local flexibility.

Section 1. Purpose and Intent

The purpose of this ordinance is to establish clear, consistent, and enforceable regulations for the use of electric bicycles (e-bikes) within the Wausau MPO region in order to:

- Promote the safety of all trail, sidewalk, and roadway users;
- Provide clarity and consistency across jurisdictions;
- Encourage responsible use of emerging micromobility technologies; and
- Align local regulations with applicable Wisconsin State Statutes.

Section 2. Definitions

For the purposes of this ordinance, the following definitions apply:

Bicycle

A vehicle propelled solely by human power through pedals and having one or more wheels.

Electric Bicycle (E-Bicycle)

A bicycle equipped with fully operable pedals and an electric motor with a maximum continuous rated power output of 750 watts (1 horsepower), meeting the requirements of Wis. Stat. § 340.01(15ph), and classified as Class 1, Class 2, or Class 3.

Class 1 E-Bicycle

An e-bicycle that provides electric assistance only when the rider is pedaling and ceases to provide assistance when the bicycle reaches a speed of 20 miles per hour.

Class 2 E-Bicycle

An e-bicycle equipped with a motor that may be used exclusively to propel the bicycle and is not capable of providing assistance when the bicycle reaches a speed of 20 miles per hour.

Class 3 E-Bicycle

An e-bicycle that provides electric assistance only when the rider is pedaling and ceases to provide assistance when the bicycle reaches a speed of 28 miles per hour, and is equipped with a speedometer.

E-Moto / Electric Motorized Device

Any electric-powered device designed for transportation that does not include fully operable pedals. This includes, but is not limited to, electric dirt bikes, electric motorcycles, and one-wheel electric devices (e.g., self-balancing single-wheel boards). E-Motos are not considered electric bicycles under this ordinance.

Multi-Use Path / Trail

Any paved or unpaved off-street path intended for shared use by pedestrians, bicyclists, and other non-motorized users.

Section 3. Applicability and State Law Adoption

1. This ordinance adopts by reference all applicable provisions of Wisconsin State Statutes governing bicycles and electric bicycles, including but not limited to; 2019 Wisconsin Act 34, Wis. Stat. § 340.01, 346.02, 346.806, and 349.18.
2. Where this ordinance is more restrictive than state law, the provisions of this ordinance shall apply.

Section 4. Permitted Use and Areas of Operation

A. Roadways

1. E-bicycles may be operated on public roadways wherever conventional bicycles are permitted.
2. E-bicycles shall be operated in a careful and prudent manner and in accordance with all traffic laws and regulations.

B. Sidewalks

1. E-bicycles may be operated on sidewalks only where local ordinance permits bicycling on sidewalks.
2. When operated on a sidewalk, an e-bicycle shall be operated at pedestrian-compatible speeds when pedestrians are present and shall yield the right-of-way to pedestrians.

3. E-Motos are prohibited from operating on sidewalks.

C. Multi-Use Paths and Trails

1. Class 1, Class 2, and Class 3 e-bicycles are permitted on multi-use paths and trails unless otherwise posted.
 2. E-Motos are prohibited from operating on any multi-use path or trail.
-

Section 5. Speed Regulations

1. No e-bicycle shall be operated at a speed greater than:
 - The posted speed limit of a roadway;
 - 15 miles per hour on multi-use paths and trails, unless a lower speed is posted;
 2. Municipalities are encouraged to post speed limits at trailheads and key access points.
-

Section 6. Operating Conduct and Etiquette

1. When approaching pedestrians or slower users, e-bicycle operators shall:
 - Reduce speed to a safe and courteous level;
 - Provide an audible warning by bell or verbal signal (e.g., “on your left”);
 - Yield to pedestrians at all times.
 2. E-bicycles shall be operated single-file on trails and sidewalks, except when safely passing another user.
 3. No person shall operate an e-bicycle in a manner that endangers the safety of others.
-

Section 7. Age Restrictions

1. Operators of Class 3 e-bicycles must be at least 16 years of age.
 2. There is no minimum age requirement for Class 1 or Class 2 e-bicycles.
-

Section 8. Equipment Requirements

1. All e-bicycles shall be equipped with:
 - Fully operable pedals;
 - A permanent manufacturer’s label indicating the e-bicycle class, top assisted speed, and motor wattage.
2. Class 3 e-bicycles must be equipped with a speedometer.
3. Required lighting and reflector equipment shall comply with Wis. Stat. § 347.489.

Section 9. Registration and Licensing

1. No registration or licensing shall be required for e-bicycles but is encouraged in the event of an e-bicycle being lost or stolen. For e-bicycle registration, contact [redacted] Police Department if applicable.
2. A driver's license is not required to operate an e-bicycle of any Class.

Section 10. Prohibited Devices

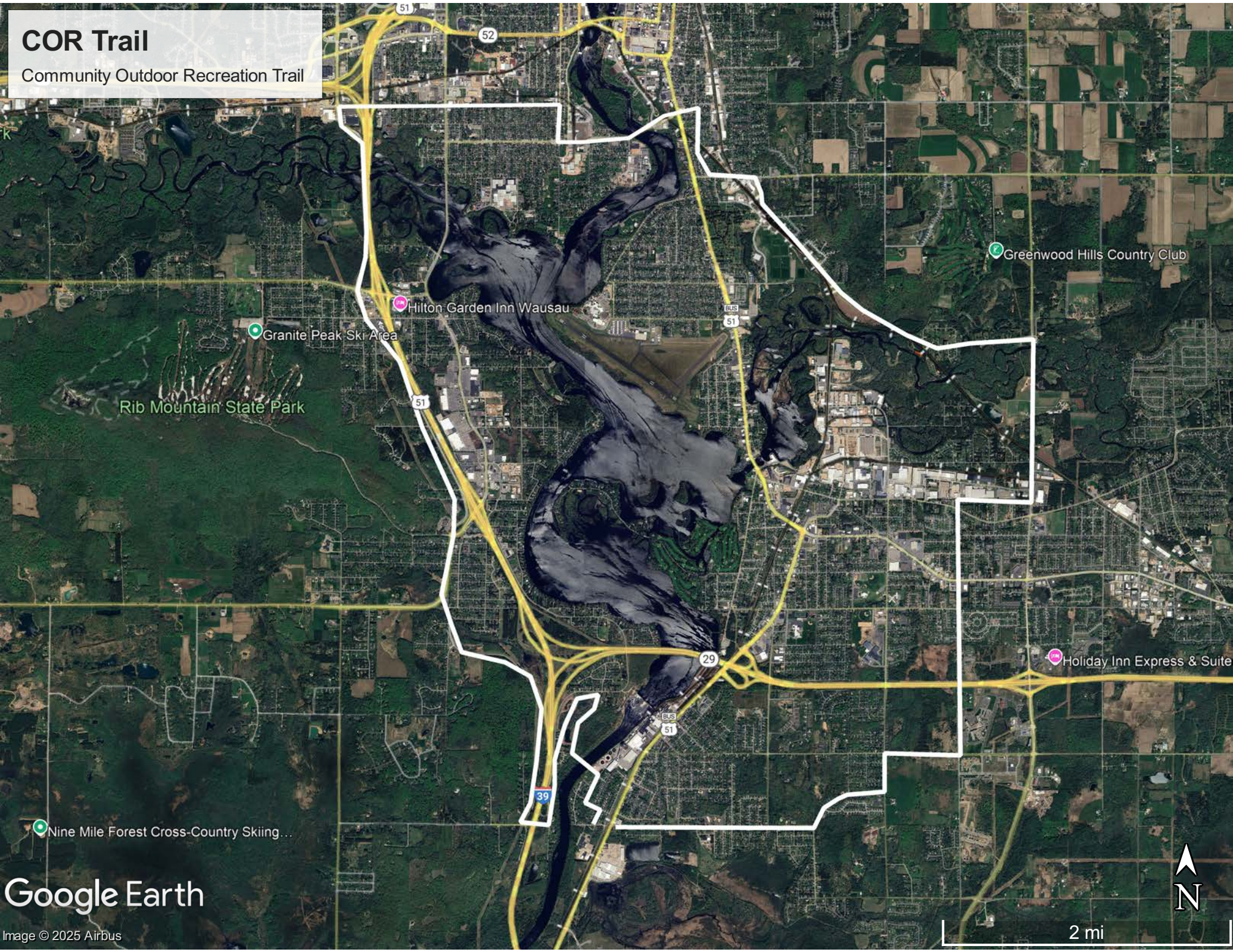
1. E-Motos and other electric motorized devices without pedals are prohibited from operating on:
 - o Sidewalks;
 - o Multi-use paths;
 - o Trails; and
 - o Parks, unless permitted by local ordinance.

Section 11. Penalties

Any person violating this ordinance shall be subject to the general penalty provisions set forth in Section [redacted] of the Municipal Code.

COR Trail

Community Outdoor Recreation Trail



Rib Mountain State Park

Granite Peak Ski Area

Hilton Garden Inn Wausau

Greenwood Hills Country Club

Holiday Inn Express & Suite

Nine Mile Forest Cross-Country Skiing...

Google Earth

Image © 2025 Airbus

2 mi





Goal

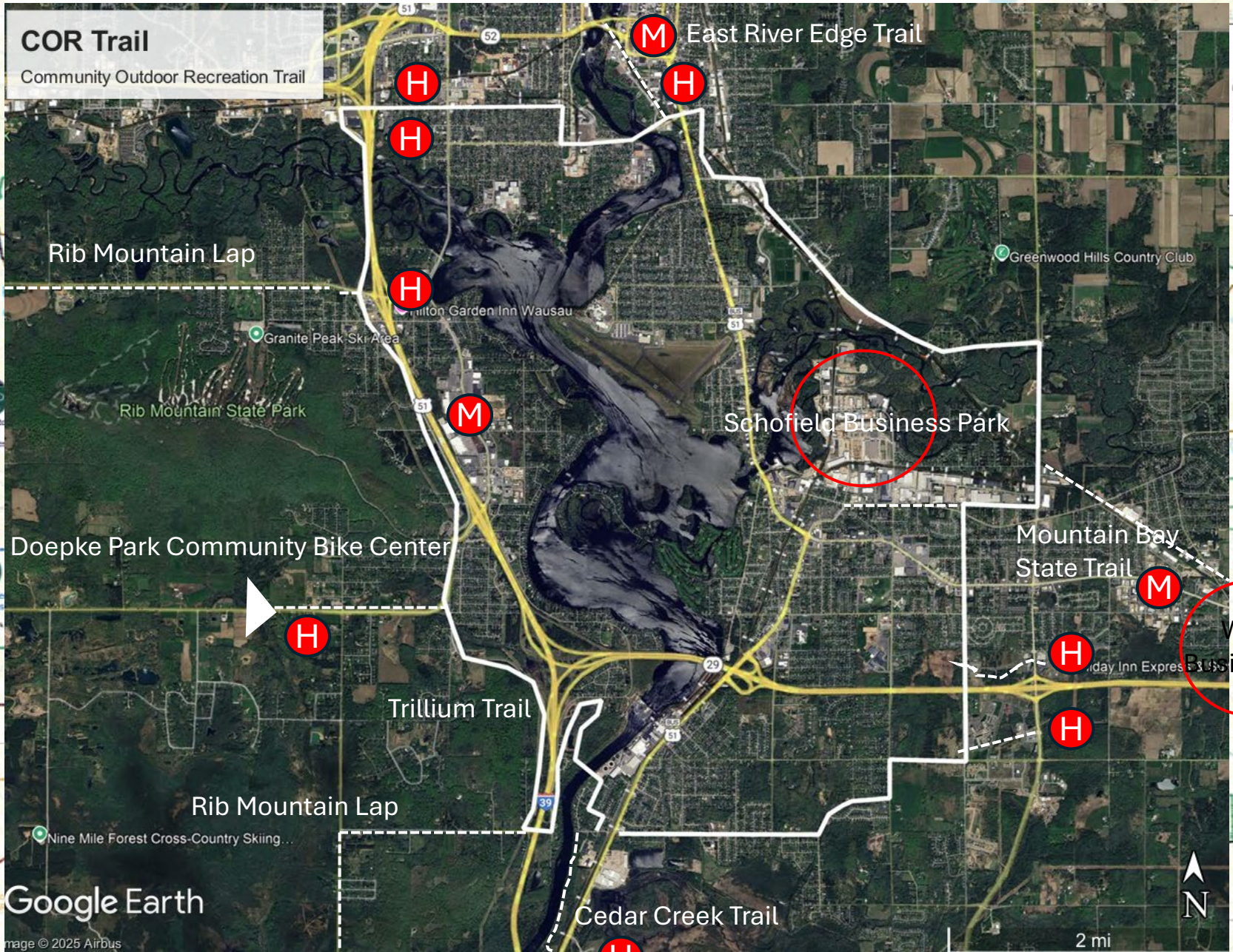
- Create a **branded loop** bike trail around the Greater Wausau Area similar to the Green Circle using existing MPO routes and bike trails.
- Trail needs to be a hub and spoke trail tying hospitality with municipal centers and Gravel Roads
- Trail needs to tie the mountain bike parks (Ringle, Sylvan Hill, 9-Mile, Gaska Park, and Speedway property
- Trail needs to connect to future community biking centers in Wausau and Rib Mountain
- A few reroutes on existing bike routes to less busy street



THE GREEN CIRCLE

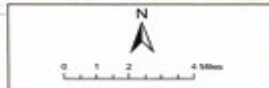
- Over 200,000 people annually use the trail
- One of the top bike trails in the state and is a state designated trail
- 27-mile loop combining intercity biking, wetlands, forest, with portions along the Wisconsin River
- Connects the Plover Trail System to the Tommorow River State Rail-to-Trail
- Open year around and used by cyclist, walkers, runners and nature enthusiast of all skill levels





Legend

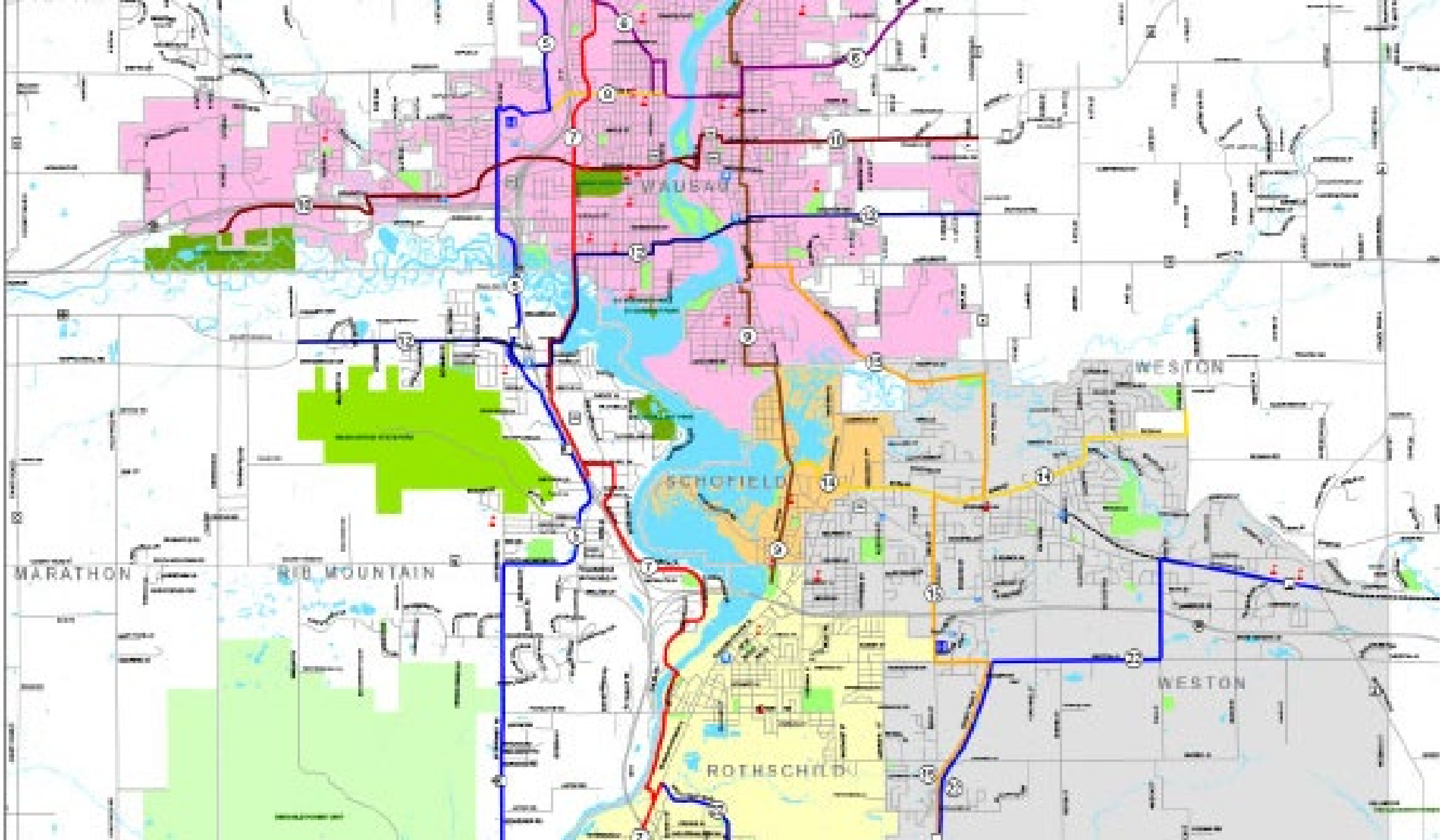
- Points of Interest
- Connector
- Yellow Line Latic Wausau Loop
- Blue Line Mainline Flowage Loop
- Red Line River Edge Parkway Loop
- Green Line Wisconsin-River Loop
- Black Line Bismarck-Waterberg 75
- Red Line West Edger
- Blue Line The Bull Billy Jack
- Green Line The Main Loop
- Black Line The Big Poniatowski Loop
- Red Line Scotch Creek Singletrack + GRW, Graventore Rib Mountain Lap
- Blue Line South 58
- Green Line Nine Wood Bush Bath
- Red Line Ironhill Essential Gravel Gravel 44
- Blue Line A1-A7 Walker Loop
- Black Line Athens Graventore
- Red Line Ackley 60
- Blue Line Mountain Bay Trail
- Green Line Ice Age Trail
- Red Line Wisconsin State Trail
- Black Line MPO Routes



Prepared By: North Central Wisconsin Regional Planning Commission
www.ncwrpc.org

Google Earth

Image © 2025 Airbus



Segments – Riding Counterclockwise

Trillium Trail Segment

- Doepke Park to Trillium Trail



Cedar Creek Trail Segment*

- Trillium Trail to Wisconsin River Bridge/Cedar Creek Trail
- River Street Park
- Cedar Creek to Birch Street



Rothschild Trail Segment

- Birch Street to Military Road
- Military Road to Gaska Park (MB Singletrack)
- Gaska Park to Buckhorn Avenue
- Buckhorn Avenue to Alderson Street
- Alderson Street to Weston Avenue
- Weston Avenue to Birch Street/ Highway 29 Pedestrian Bike Bridge

Rothschild/Weston Trail Segment

- Birch Street to Military Road
- Military Road to Gaska Park (MB Singletrack)
- Gaska Park to Buckhorn Avenue
- Buckhorn Avenue to Alderson Street
- Alderson Street to Weston Avenue
- Weston Avenue to Birch Street/ Highway 29 Pedestrian Bike Bridge*

Weston Trail Segment*

- Birch Street to Concord Street
- Schofield Business Park
- Weston Business Park via Mountain Bay State Trail
- Concord Street to Camp Phillips Road
- Camp Phillips Road to Northwestern Avenue

Weston/Wausau Trail Segment*

- Camp Phillips Road to Northwestern Avenue
- Yellow Banks Park
- Northwestern Avenue to County Road N
- County Road N to Excelsior Drive
- Excelsior Drive to Prospect Avenue
- Big Bull Falls Brewery
- Prospect Avenue to Thomas Street
- Hammond Park
- Spoke to Oak Island/East River Edge Parkway
- Thomas Street to River Edge Trail
- Riverside Park
- West River Edge Parkway to Sherman Street

Wausau/Rib Mountain Trail Segment*

- Sherman Street to Hummingbird Drive Parkway
- Hummingbird Drive to Doepke Park

Hospitality

Cedar Creek Trail Segment*

- The Current (Future Recreation Development)
- Holiday Inn & Suites Wausau-Rothschild
- Cedar Creek Hotel And Conference Center
- Econo Lodge Wausau - Rothschild
- Motel 6 Rothschild
- bantr Grand Hotel Wausau - Rothschild
- Best Western Plus Wausau-Rothschild Hotel

Weston Trail Segment*

- Fairfield by Marriott Inn & Suites Wausau
- AmericInn by Wyndham
- Holiday Inn Express & Suites

Weston/Wausau Trail Segment*

- Inn at the River
- Jefferson Street Inn via East River Edge Parkway
- Steward Inn via existing biking routes

Wausau/Rib Mountain Segment*

- La Quinta Inn by Wyndham
- Super 8 by Wyndham
- Hampton Inn Wausau
- Courtyard by Marriott
- Hilton Garden Inn
- Rib Mountain Inn & Townhouses via Rib Mountain Lap

Mountain Bike Parks

9-Mile Recreation Area

- Rib Mountain Lap

Speedway Park (Under Development)

- Rib Mountain Lap

Scotch Creek - Edgar

- Rib Mountain Lap
- Bull Billy Jack Loop
- West Edgar Loop
- Scotch Creek Graventure Loop
- Edgar-Fenwood County Rail-to-Trails

Erbach Park - Athens

- Bull Billy Jack Loop
- Athens Graventure Loop
- Big Poniatowski Loop

Sylvan Hill Mountain Bike Park

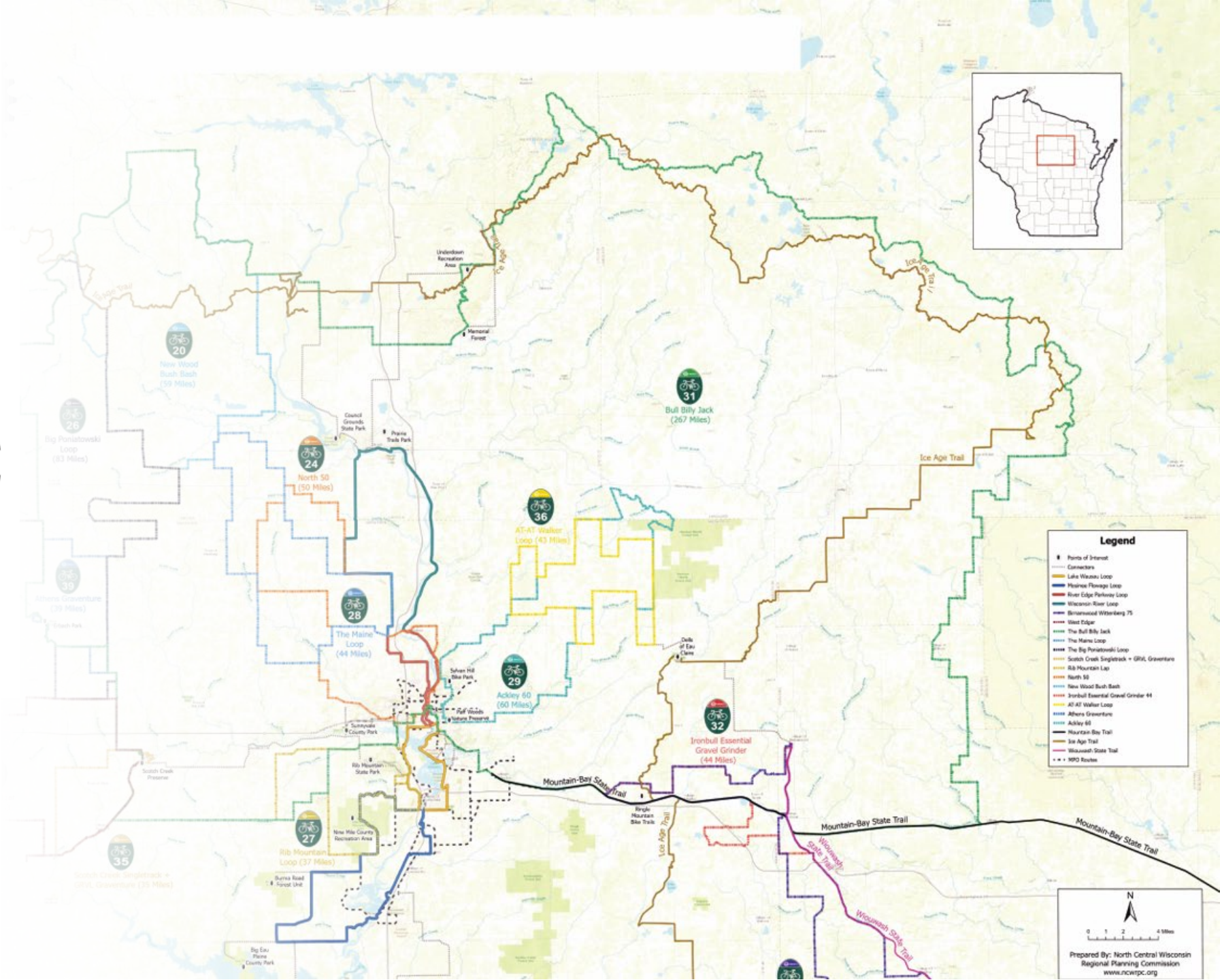
- River Edge Parkway
- Ackley

Ringle Mountain Bike Park

- Mountain Bay State Trail
- Bull Billy Jack Loop

Underdown/ Prairie Dells Recreational Area – Lincoln County

- Bull Billy Jack Loop



Granite Belt Gravel Roads

Athens Trailhead – Connection via Bull Billy Jack, West Edgar & Scotch Creek Graventure

- Athens Graventure – 27-mile Loop
- Big Poniatowski – 89.3-mile Loop

Hatley/Ringle Trailhead

- Essential Gravel Grinder – 44-mile Loop

Edgar Trailhead – Connection via Bull Billy Jack

- West Edgar – 63-mile Loop
- Scotch Creek Graventure – 21.7-mile Loop
- Edgar – Fenwood Rails-to-Trails – 7.3 -mile Linear

Maine Trailhead – Connection via North50

- The Maine Loop – 48-mile Loop

Merrill Trailhead – Connection via North50 & Maine Loop

- New Wood Bush Bash – 59-mile Loop

Rib Mountain Trailhead – Connection via Bull Billy Jack

- Rib Mountain Lap – 36.6-mile Loop

Ringle Trailhead – Connection via Mountain Bay State Trail

- Wittenberg/Birnamwood Metric – 72.5-mile Loop

Wausau Trailhead – Connection via Wisconsin River Loop, Mountain Bay State Trail

- Sylvan Hill Mountain Bike Park – Ackley 60 – 58.5-mile Loop
- Marathon County Park – Nort50 - 49.5-mile Loop
- Wisconsin River Loop – 27-miles
- West River Edge Parkway

Weston Trailhead – Connection via Bull Billy Jack

- Mountain Bay State Trail – 93-mile Linear

Bull Billy Jack – 367-mile Loop



Would be mounted on existing bike signpost or new post

Wisconsin Gravel

- Wisconsin Gravel would provide the unique loop signage at no cost
- Rent-A-Flash would be the sign provider
- Gary Barden Design is the logo creator