

Wausau MPO

Intersection Crash Statistics January 2018 – December 2022



Top 20 Crash Intersections

- Camp Phillips Road and Schofield Avenue (76), (V. of Weston)
 - Schofield Avenue and Metro Drive (63), City of Schofield)
 - Stewart Avenue and 17th Avenue (51), (City of Wausau)
 - 4th Street and Main Street (46), (City of Mosinee)
 - Rib Mountain Drive and County Road NN (43), (V of Rib Mtn.)
 - Grand Ave and Highway 29 Westbound on/off Ramp (42), (V of Rothschild)
 - 1st Avenue and Bridge Street (40), (City of Wausau)
 - Stewart Avenue and 18th Avenue (37), (City of Wausau)
 - Thomas Street and Grand Avenue (36), (City of Wausau)
 - 5th Street and Bridge Street (35), (City of Wausau)
 - Rib Mountain Drive and Highway 51 North Off Ramp (34), (V of Rib Mtn.)
 - Grand Ave and Highway 29 Eastbound on/off Ramp (34), (V of Rothschild)
 - 17th Avenue and Bridge Street (33), (City of Wausau)
 - Rib Mountain Drive and Morning Glory Lane (33), (V of Rib Mtn.)
 - 5th Street and Scott Street (31), (City of Wausau)
 - 3rd Avenue and Stewart Avenue (31), (City of Wausau)
 - Camp Phillips Road and Highway 29 West On/Off Ramp (29), (V. of Weston)
 - Rib Mountain Drive and Vly Inn Lane (25), (V of Rib Mtn.)
 - Rib Mountain Drive and Cloverland Lane (25), (V of Rib Mtn.)
- ### 3 Intersections Tied at 24 Crashes
- 3rd Avenue and Bridge Street (24), (City of Wausau)
 - Bridge Street and Highway 51 North On/Off Ramp (24), (City of Wausau)
 - Everest Avenue and Camp Phillips Road (24), (V. of Weston)

Wausau MPO

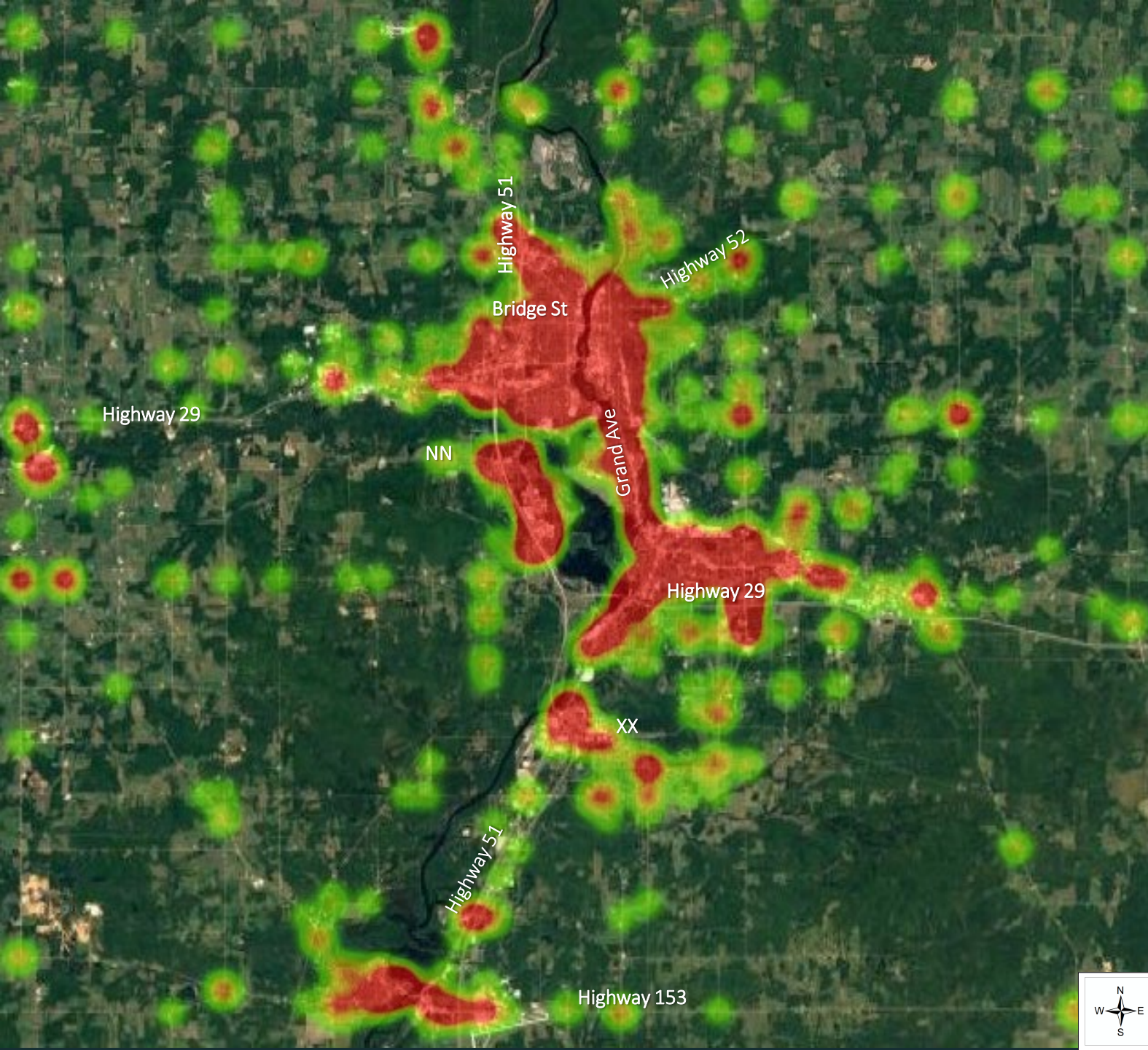
Intersection Crash Statistics

January 2018 – December 2022

Parameters/Variables Used

- <https://transportal.cee.wisc.edu/partners/community-maps/crash/advanced/AdvancedSearchValidate.do>
- 100 Meters per 59 pixels used for cluster statistics (Except City of Wausau, 50 Meters per 59 pixels used for cluster statistics Due to close proximity of accidents downtown)
- Deer Collisions Excluded
- Intersection Flag Filter only applied
- Types of crashes selected: **Fatality**, **Injury A** (Suspected Serious Injury), **Injury B** (Suspected Minor Injury), **Injury C** (Possible Injury), and **Property Damage/No Apparent Injury**
- Dates selected are **January 1, 2018** through **December 31, 2022**

Wausau MPO Intersection Crashes Heat Map



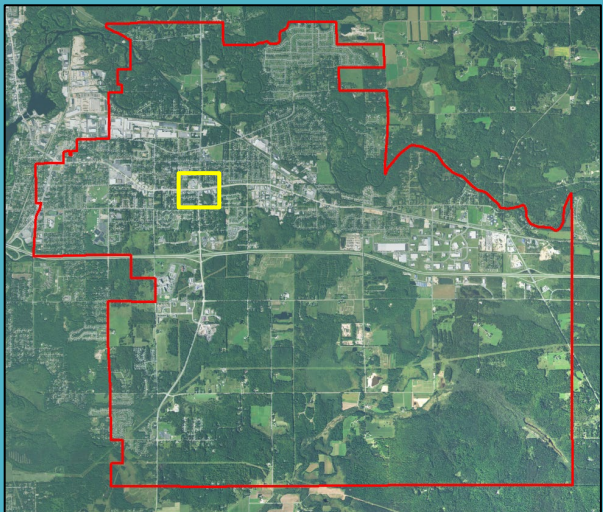
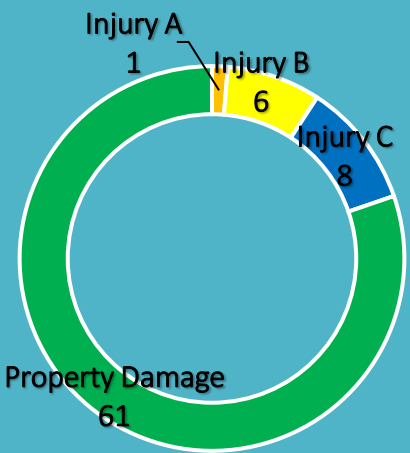
Fatalities

- Bridge Street & 1st Street, 4/27/2018, 10:00 PM, Vehicle Vs. Vehicle, 65+ Driver
- Park Avenue & 6th Street, 11/07/2018, 5:00 PM, Vehicle Vs. Pedestrian, 65+ Driver
- Washington St & 1st Street, 6/8/2022, 11:00pm, Vehicle Vs. Pedestrian
- Forest Street & 10th Street, 9/1/2022, 3:00 PM, Vehicle Vs. Bike
- Red = Hot Spot



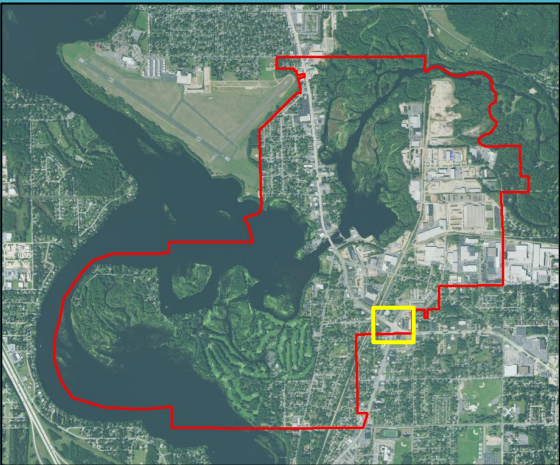
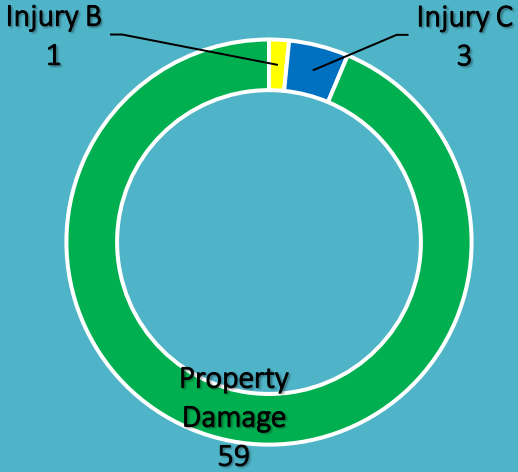
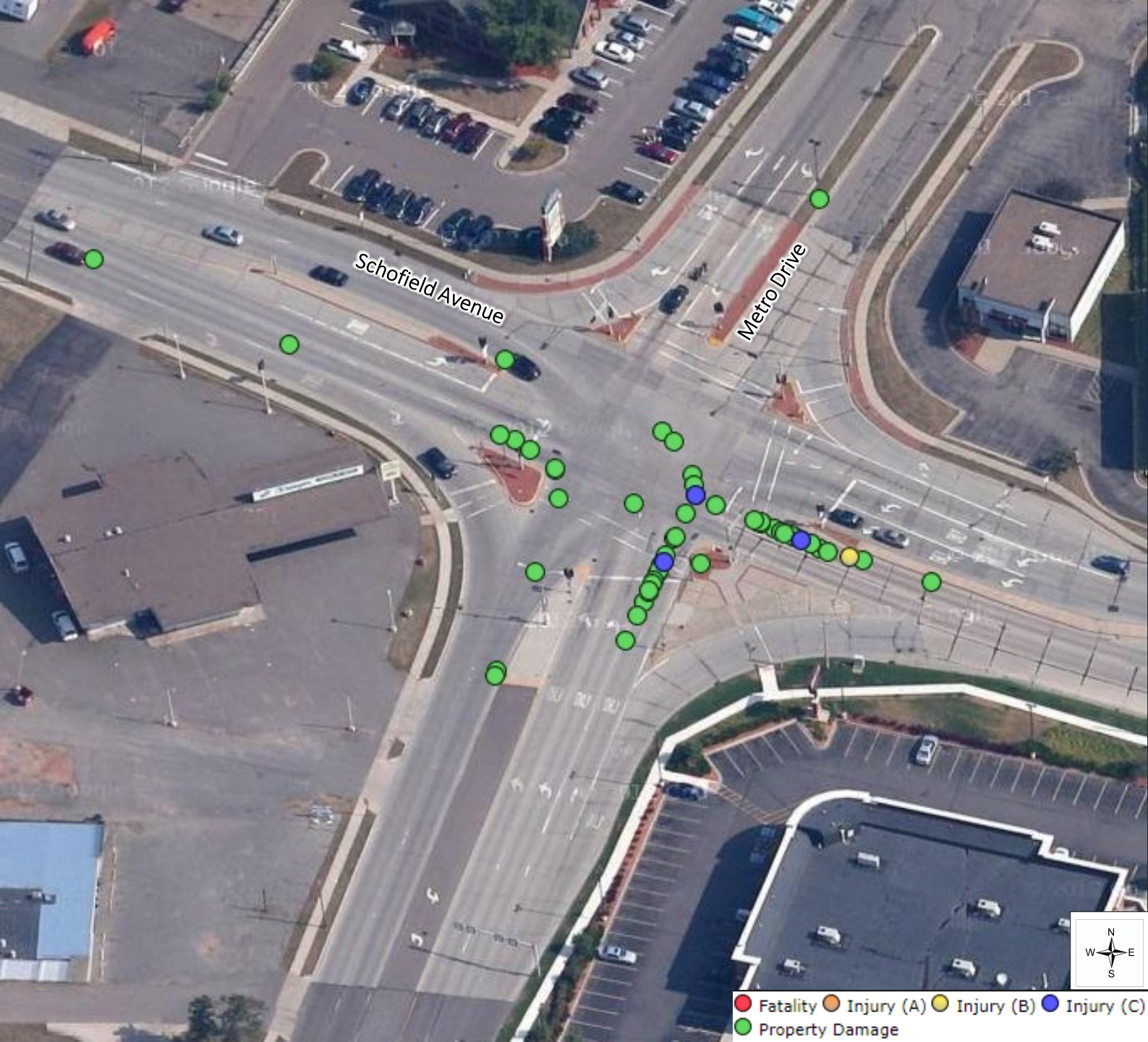
Camp Phillips Road and Schofield Avenue (Village of Weston)

76 Total Crashes



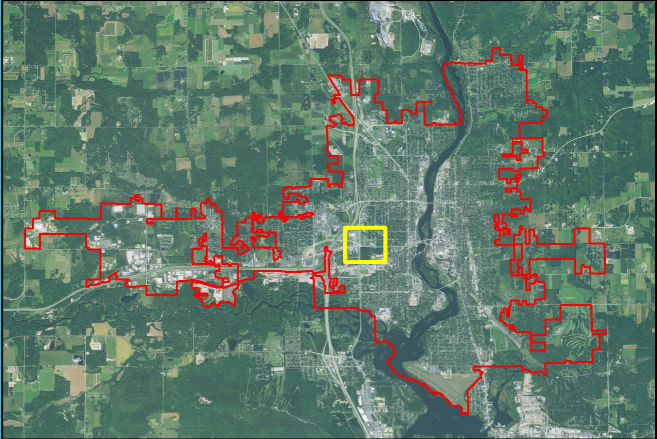
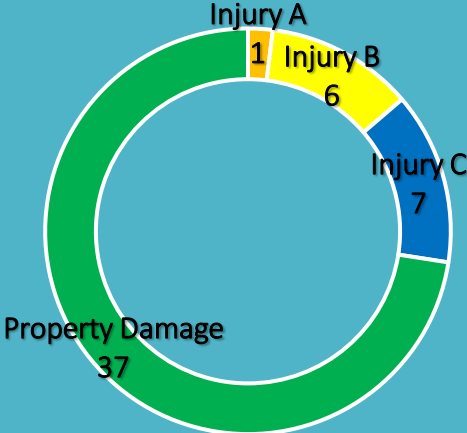
Schofield Avenue and Metro Drive (City of Schofield)

63 Total Crashes



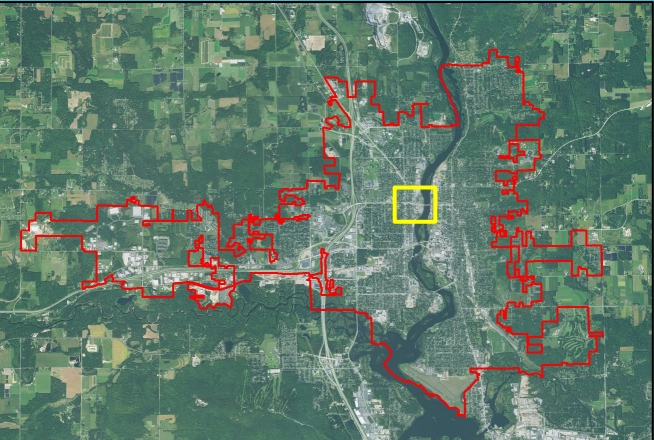
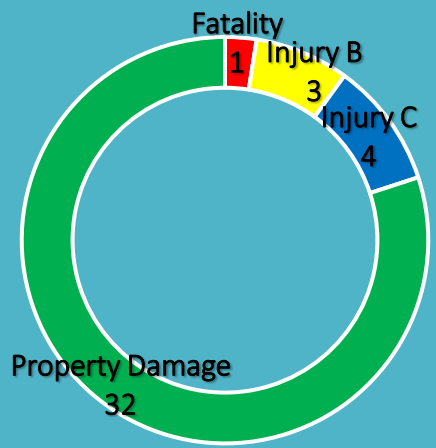
Stewart Avenue and 17th Avenue (City of Wausau)

51 Total Crashes



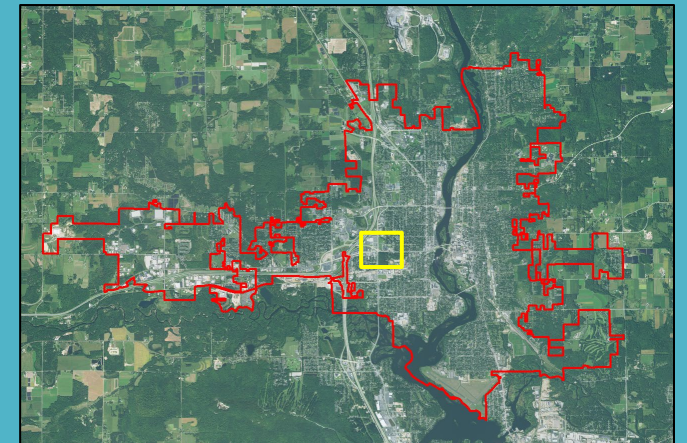
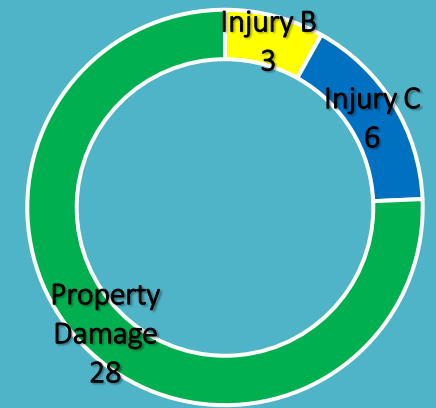
1st Avenue and Bridge Street (City of Wausau)

40 Total Crashes



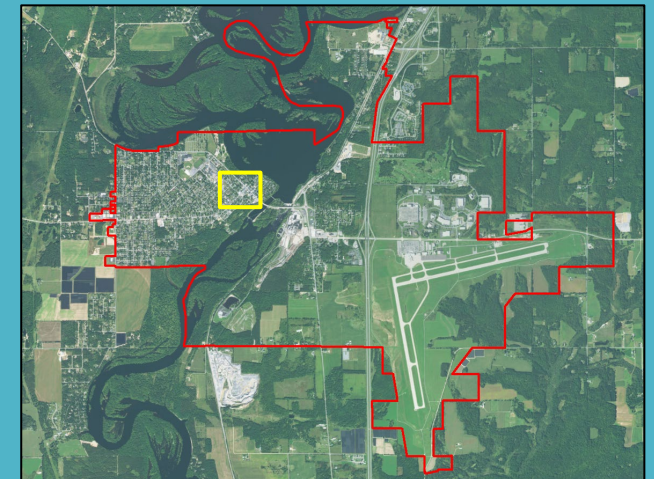
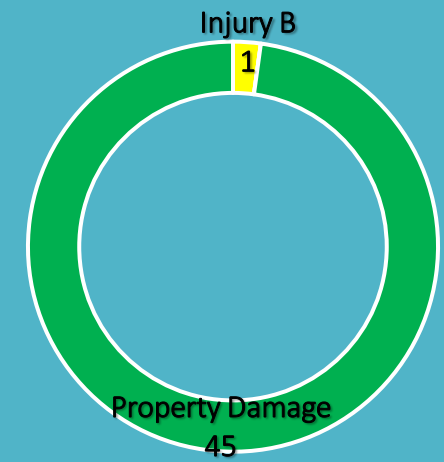
Stewart Avenue and 18th Avenue (City of Wausau)

37 Total Crashes



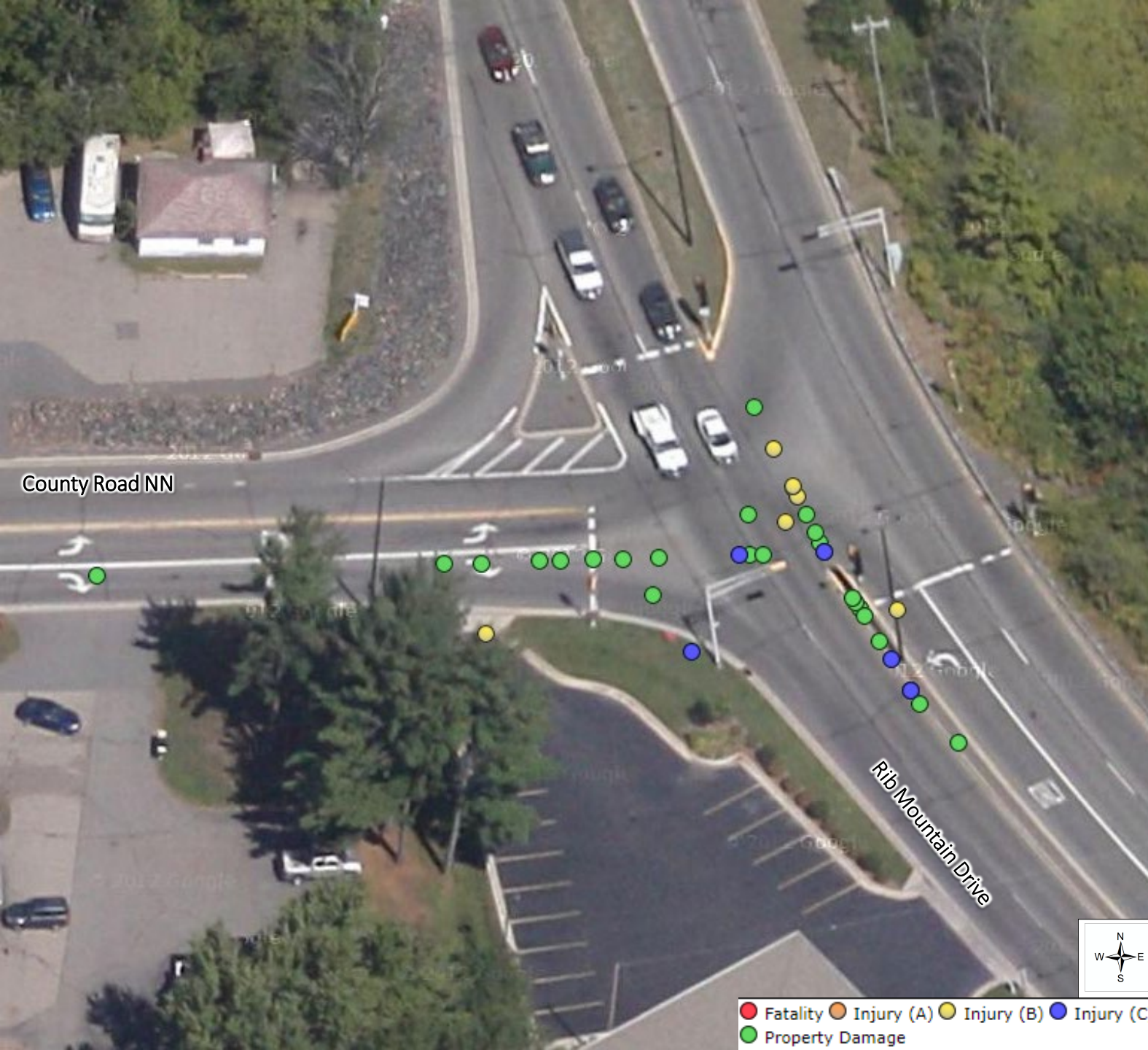
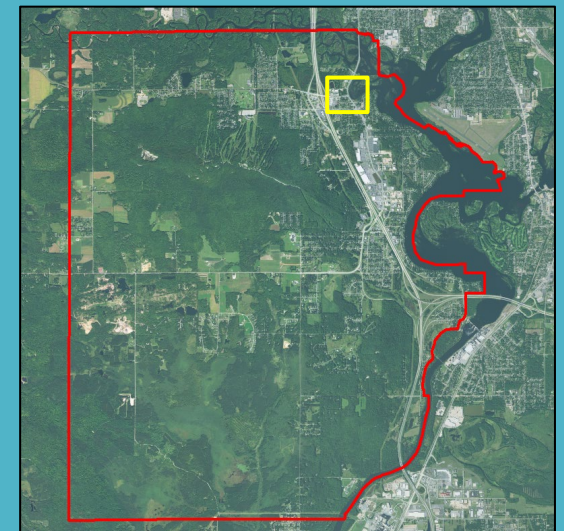
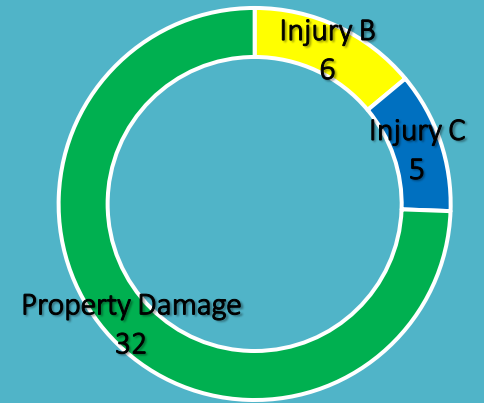
4th Street and Main Street (City of Mosinee)

46 Total Crashes



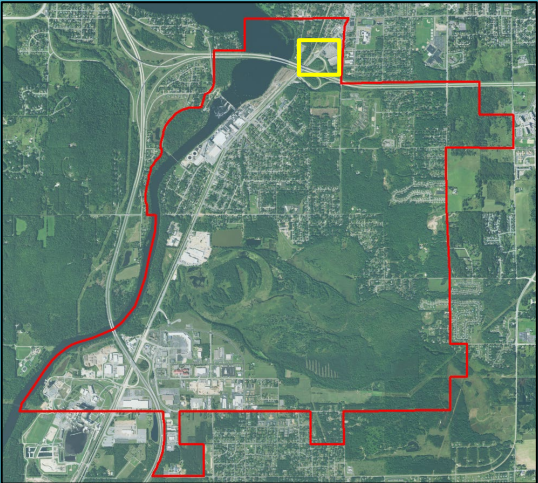
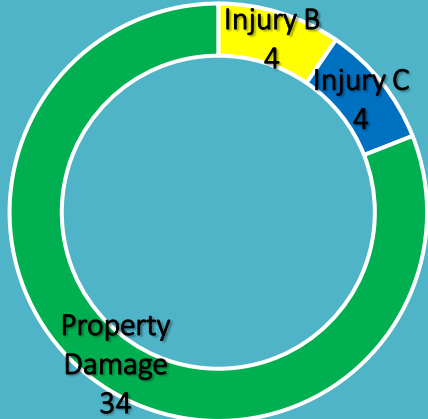
Rib Mountain Drive and County Road NN (Town of Rib Mountain)

43 Total Crashes



Grand Avenue and Highway 29 Westbound on/off Ramp (Village of Rothschild)

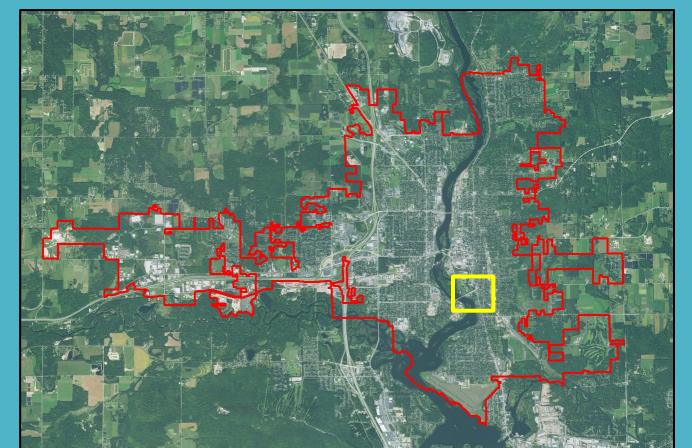
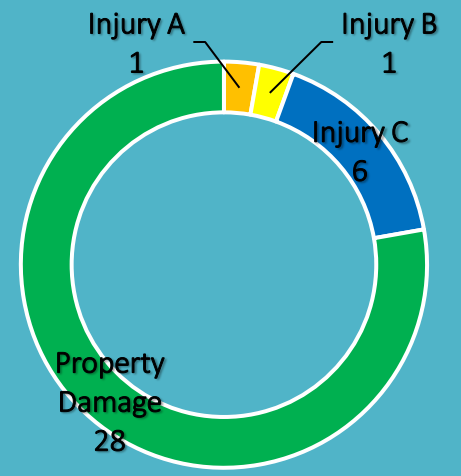
42 Total Crashes



- Fatality
- Injury (A)
- Injury (B)
- Injury (C)
- Property Damage

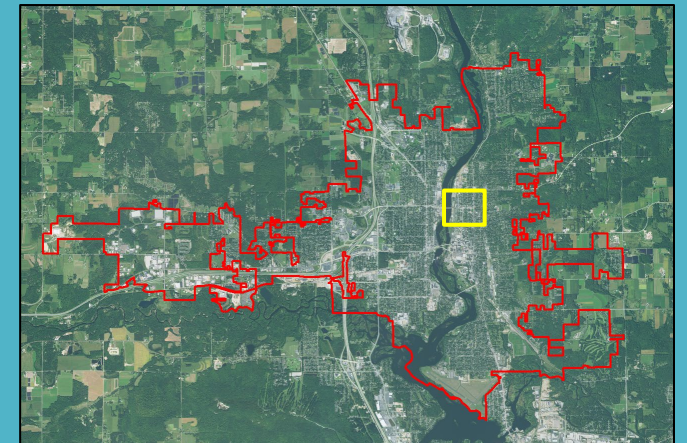
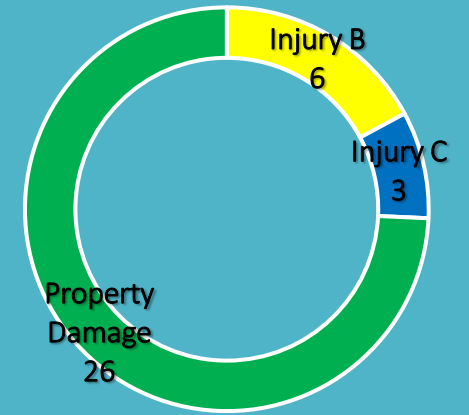
Thomas Street and Grand Avenue (City of Wausau)

36 Total Crashes



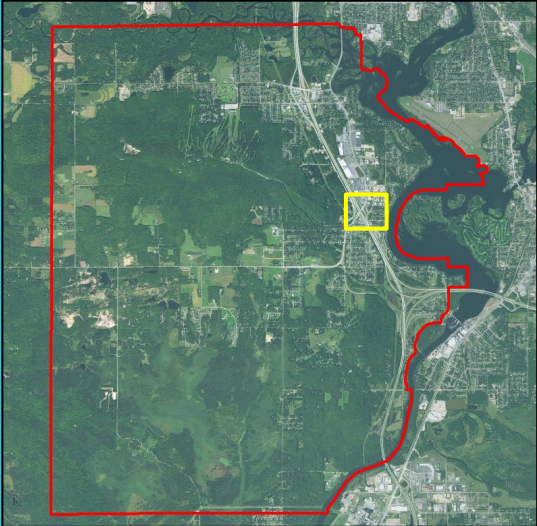
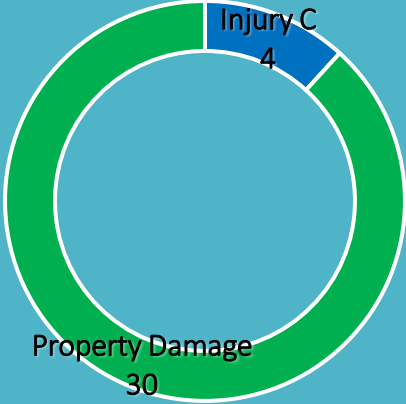
5th Street and Bridge Street (City of Wausau)

35 Total Crashes



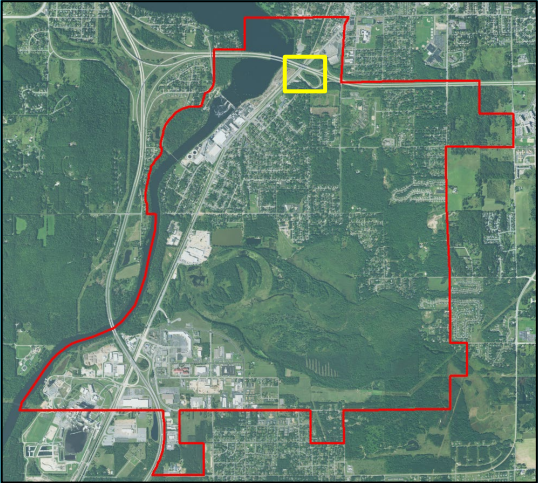
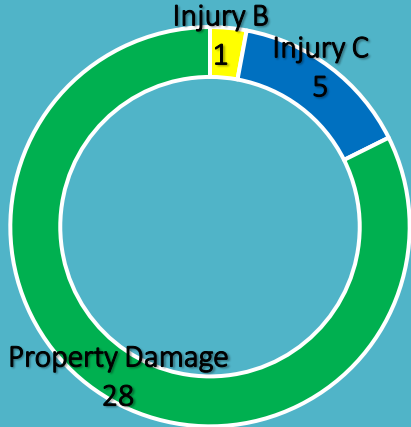
Rib Mountain Drive and Highway 51 North Off Ramp (Town of Rib Mountain)

34 Total Crashes



Grand Avenue and Highway 29 Eastbound on/off Ramp (Village of Rothschild)

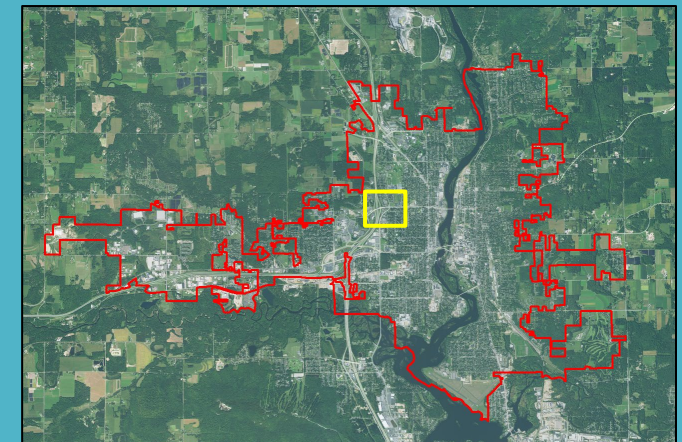
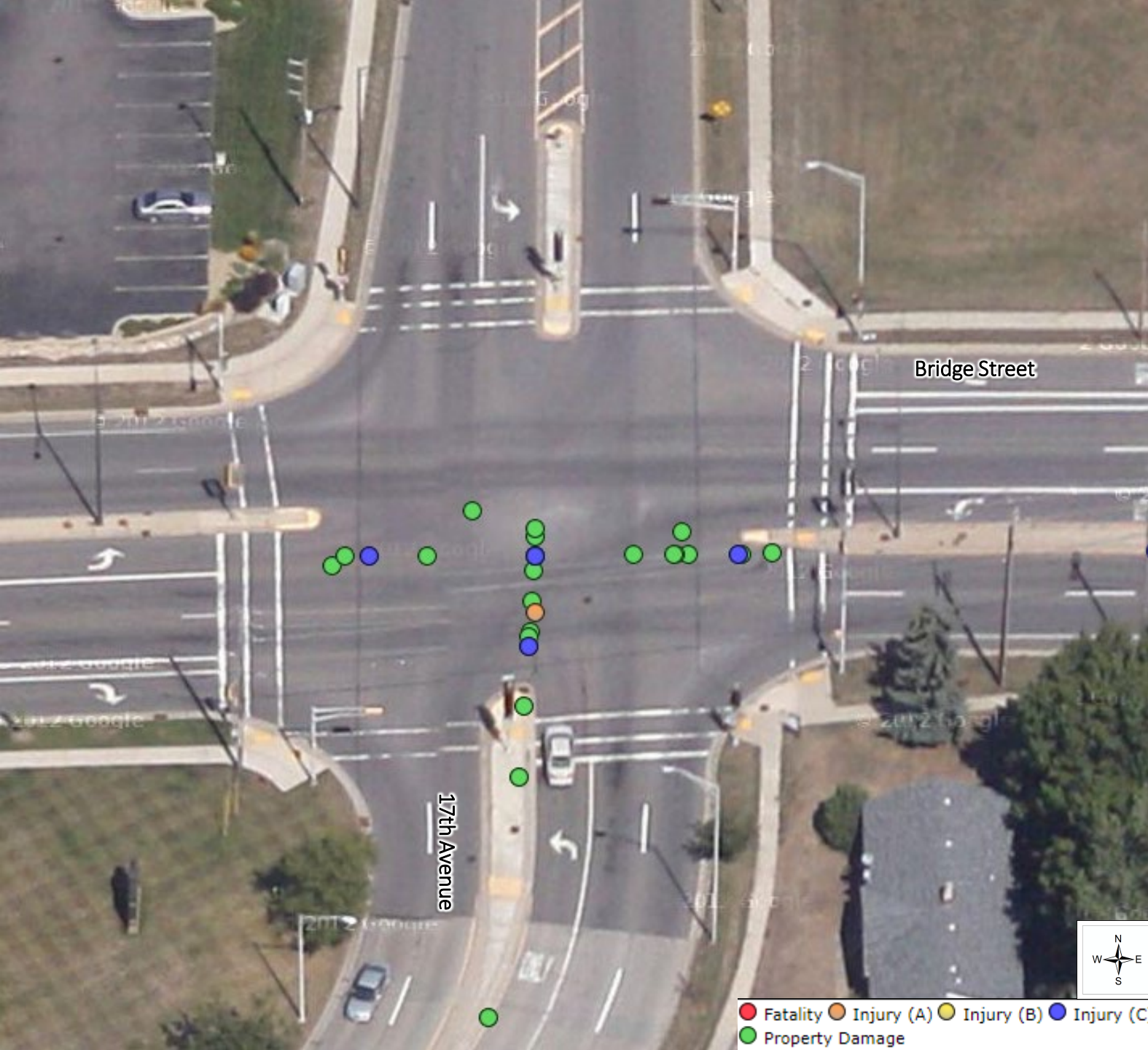
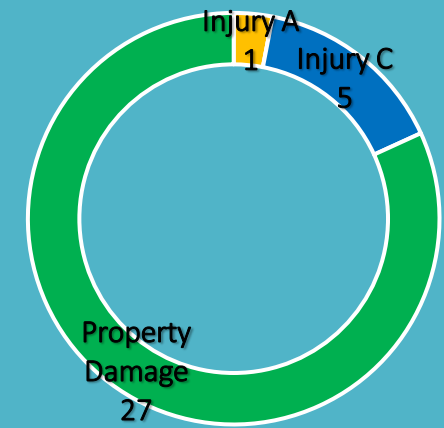
34 Total Crashes



- Fatality
- Injury (A)
- Injury (B)
- Injury (C)
- Property Damage

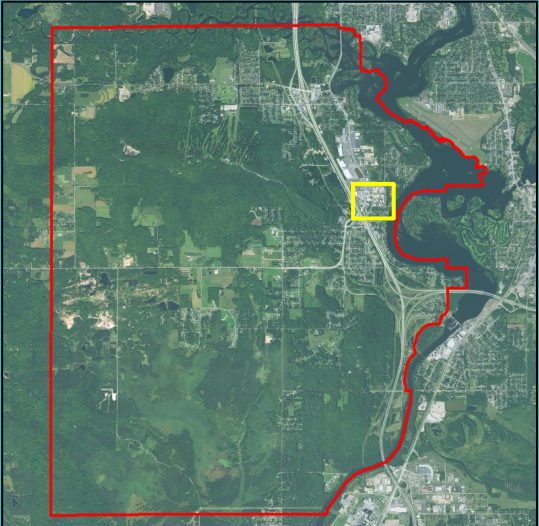
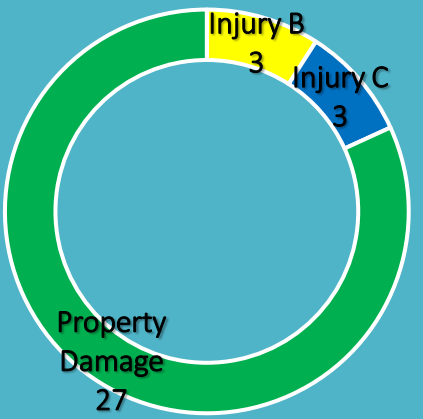
17th Avenue and Bridge Street (City of Wausau)

33 Total Crashes



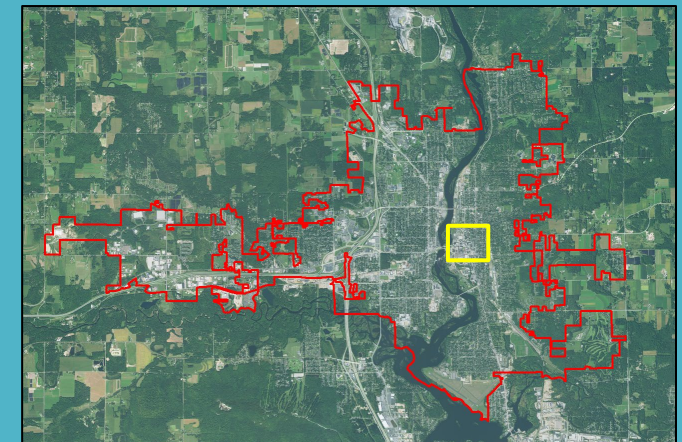
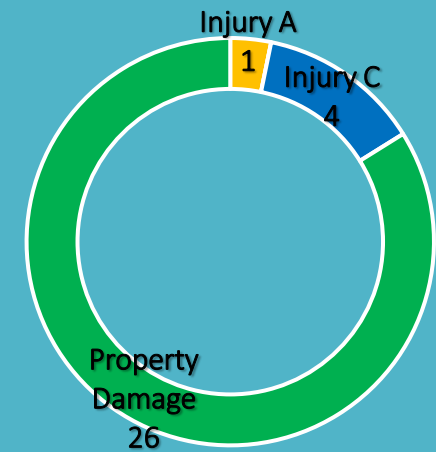
Rib Mountain Drive and Morning Glory Lane (Town of Rib Mountain)

33 Total Crashes



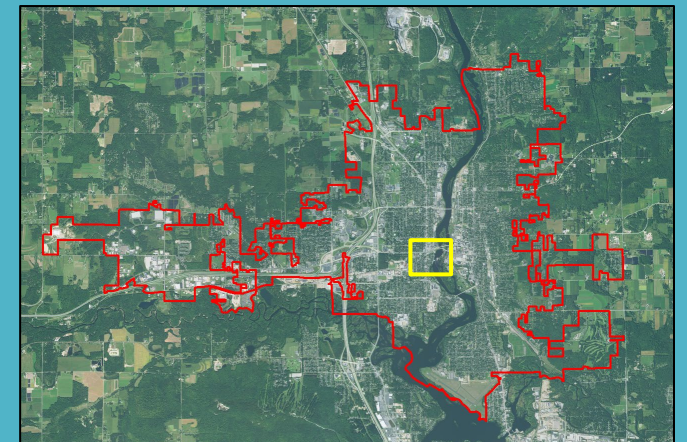
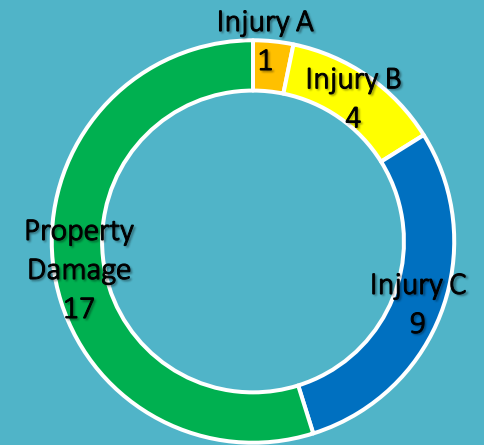
5th Street and Scott Street (City of Wausau)

31 Total Crashes



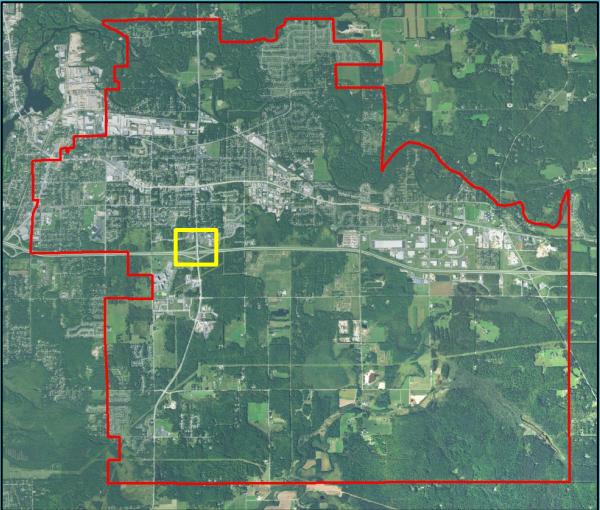
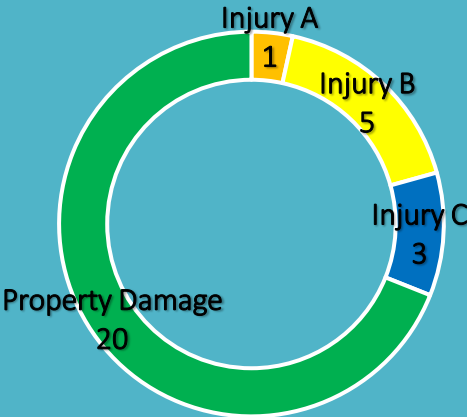
3rd Avenue and Stewart Avenue (City of Wausau)

31 Total Crashes



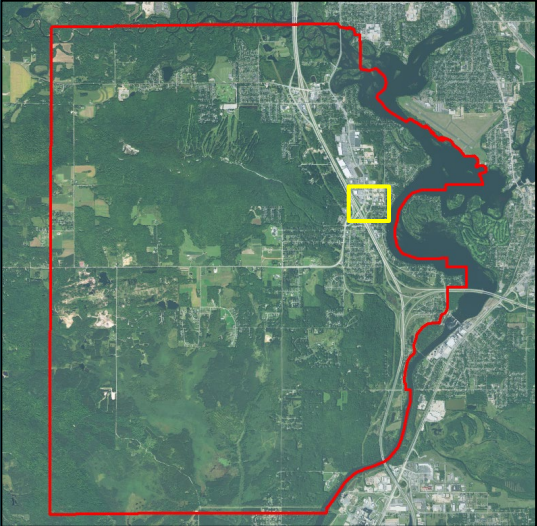
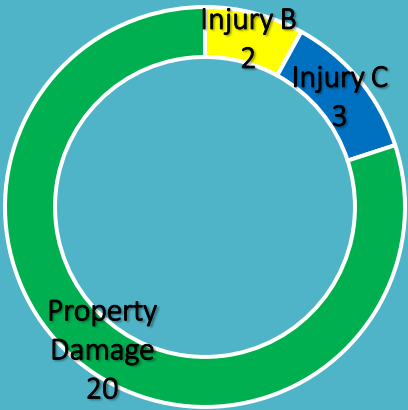
Camp Phillips Road and Highway 29 West On/Off Ramp (Village of Weston)

29 Total Crashes



Rib Mountain Drive and Vly Inn Lane (Town of Rib Mountain)

25 Total Crashes

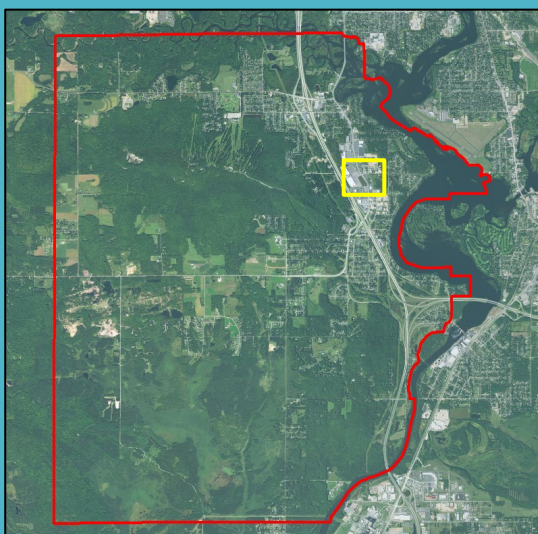
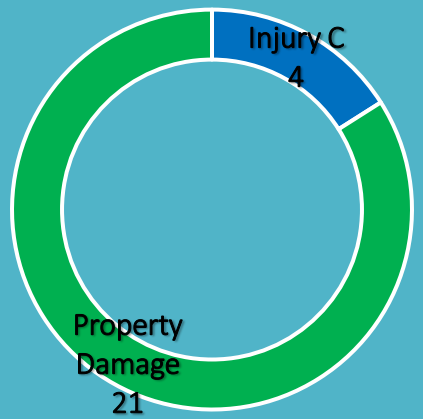




- Fatality
- Injury (A)
- Injury (B)
- Injury (C)
- Property Damage

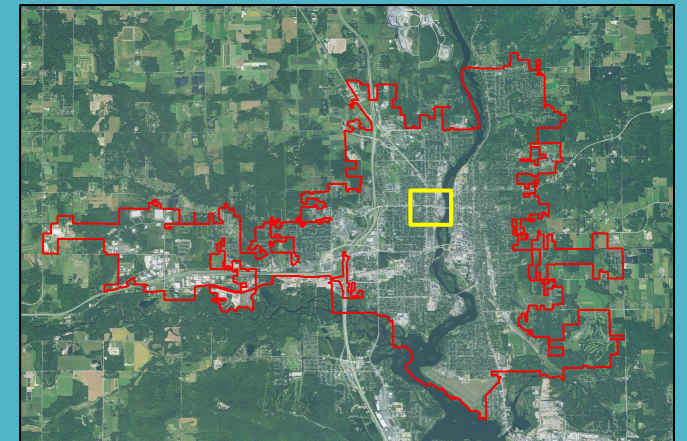
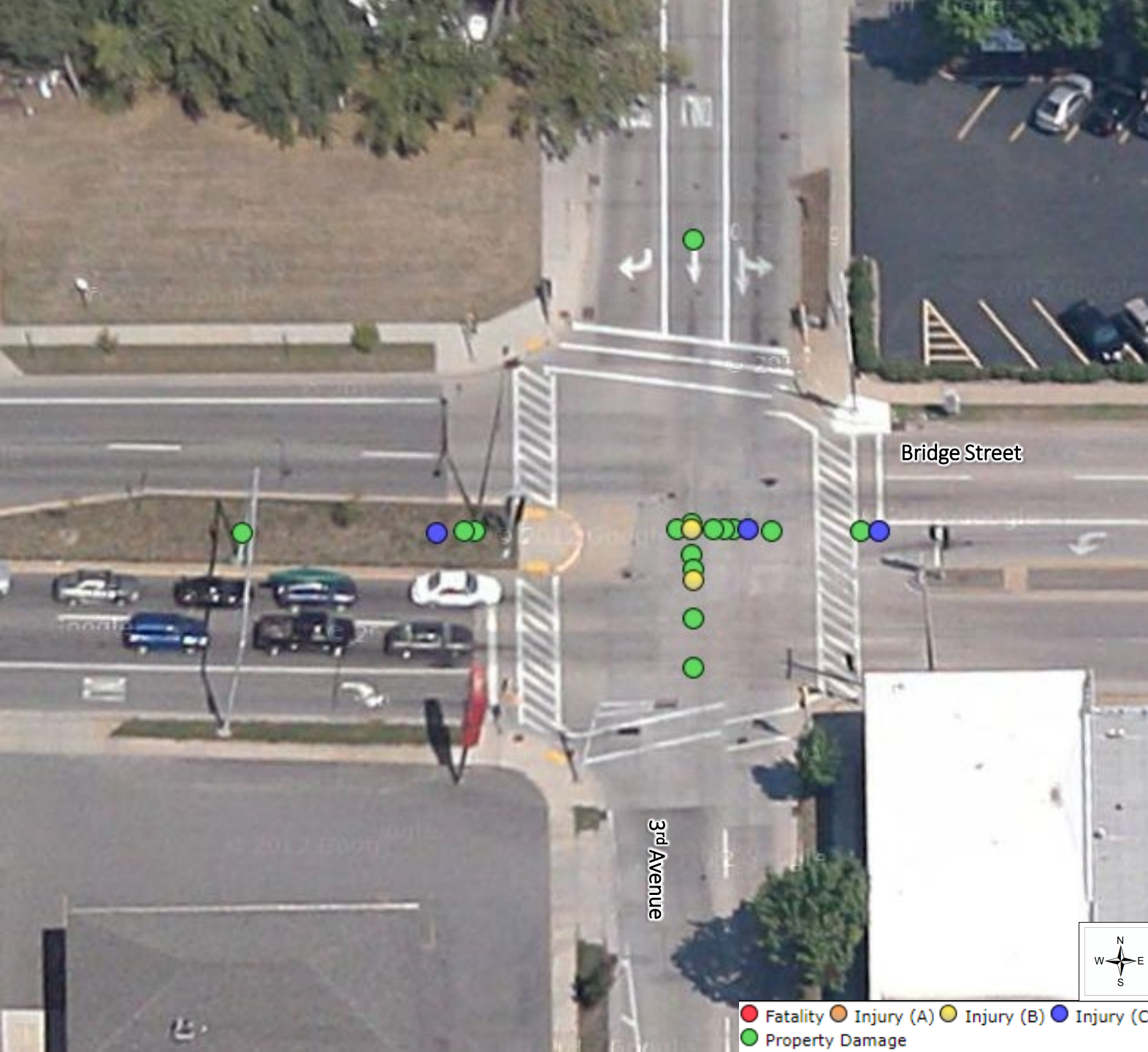
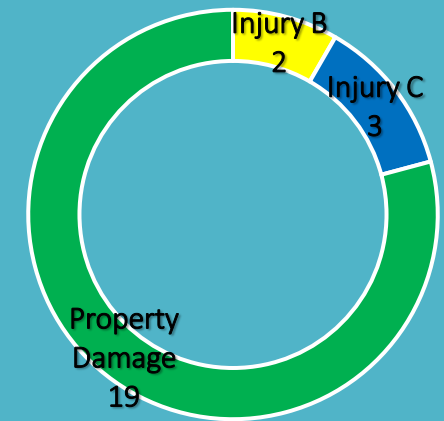
Rib Mountain Drive and Cloverland Lane (Town of Rib Mountain)

25 Total Crashes



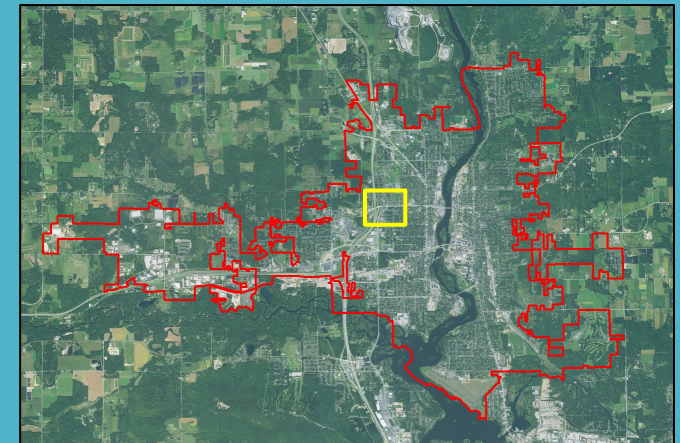
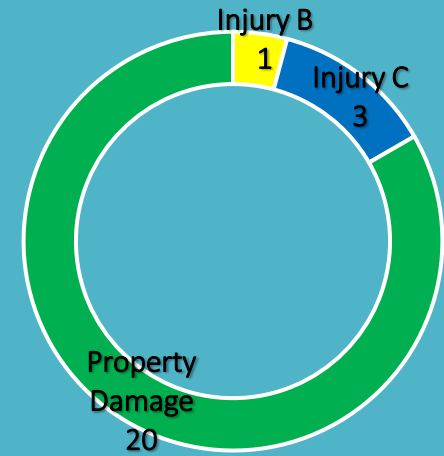
3rd Avenue and Bridge Street (City of Wausau)

24 Total Crashes



Bridge Street and Highway 51 North On/Off Ramp (City of Wausau)

24 Total Crashes



Everest Avenue and Camp Phillips Road (Village of Weston)

24 Total Crashes

