

OFFICIAL NOTICE AND AGENDA
of a meeting of the County Board, Committee, Agency,
Corporation or Sub-Unit thereof,

COUNTY OF MARATHON
WAUSAU, WI 54403

**MARATHON COUNTY METROPOLITAN PLANNING COMMISSION'S
BICYCLE AND PEDESTRIAN SUB-COMMITTEE
AGENDA**

April 27, 2023
4:00 P.M.

LARGE CONFERENCE ROOM
210 RIVER DRIVE, WAUSAU, WI

Commission Purpose: *The Commission shall be concerned with studies and recommendations related to activities including but not limited to land-use; natural resources; utilities; and transportation systems within the metropolitan planning area. (Commission Bylaws last updated: 12-18)*

Persons wishing to attend the meeting by phone may call into the telephone conference beginning **five (5) minutes prior to the start time indicated above using the following number:**

PHONE NUMBER: 1-408-418-9388
ACCESS CODE: 965 620 244

Please Note: If you are prompted to provide an "Attendee Identification Number" enter the # sign.
No other number is required to participate in the telephone conference.
When you enter the telephone conference, PLEASE PUT YOUR PHONE ON MUTE!

AGENDA ITEMS:

1. CALL TO ORDER
2. WELCOME AND INTRODUCTIONS

POLICY DISCUSSION AND POSSIBLE ACTION:

3. APPROVE THE MINUTES OF THE APRIL 28, 2022, MEETING
4. INTRODUCTION OF MPO PLANNER LANCE MUELLER
5. METRO AREA BIKE MAP UPDATE
6. BIKE/PEDESTRIAN DATA COLLECTION PROGRAM - COUNTER LOCATIONS
7. COMMITTEE SURVEY RESULTS
8. FUTURE OF THE COMMITTEE
9. COMMUNITY UPDATES AND AREAS OF CONCERN
10. NEXT MEETING DATE
11. ADJOURN

Any person planning to attend this meeting who needs some type of special accommodation in order to participate should call the County Clerk's Office at 715-261-1500 or e-mail infomarathon@mail.co.marathon.wi.us one business day before the meeting.

SIGNED 
PRESIDING OFFICER OR DESIGNEE

EMAILED TO: Daily Herald; City Pages; Marshfield News NOTICE POSTED AT COURTHOUSE:
EMAILED TO: Mid-west Radio Group; TPP Printing

EMAILED BY: BI _____ By: _____
EMAILED DATE: 04/20/2023 Date: _____
EMAILED TIME: 3:00pm Time: _____ a.m/p.m.

MARATHON COUNTY METROPOLITAN PLANNING COMMISSION
Bicycle and Pedestrian Sub-Committee
Minutes – April 28, 2022

Members: Mark Thuot, John Beatty, Tom Mullaly, Hooshang Zeyghami, Scott Turner, Amanda Tabin, Jared Grande
Staff: Andrew Lynch

1. CALL TO ORDER

Meeting called to order by LYNCH at 5:31pm

2. WELCOME AND INTRODUCTIONS

3. APPROVE THE MINUTES OF JANUARY 27, 2022 MEETING

Motion/second by THUOT/MULLALY to approve the meeting minutes from the January 27 meeting. Motion **carried** by voice vote, no dissent.

4. BIPARTISAN INFRASTRUCTURE LAW UPDATE

LYNCH update the committee on the projects submitted for the FFY22 STP funds and explained the Carbon Reduction funds. While the timeline for this year is tight, considerations for the future 4 years of funding can be done. TAP funds will be available in June and August for additional planning and infrastructure projects.

5. INPUT ON COUNTY HIGHWAY N TRAIL CONCEPT IN RIB MOUNTAIN

Rib Mountain is exploring ideas for a trail west along CTH N from the intersection of CTH KK. Options for the route were brought to the committee to solicit feedback before a feasibility study is done. Consideration of a trail on the north side of CTH N and or moving the crossing of N could address some of the safety concerns. This project is likely within the 5-10 year Rib Mtn timeline.

6. FUTURE PROJECT FOR COMMITTEE

This is the last meeting as MPO staff for LYNCH, he will be working at the City of Wausau. Future meetings will likely not be during the summer while the MPO hires a planner. Some projects the committee could continue with include the Bike Map redesign and closing some of the gaps between communities.

7. COMMUNITY UPDATES AND FUTURE EVENTS

- a. Weston – Birch St bridge could be closed for a few days due to street construction. Access to the Mountain Bay trailhead could also be limited due to construction on Mesker.
- b. Aspirus – Bike rodeos and helmet fittings. Also classes for adults in conjunction with the Bike Federation. Flyers and information will be sent out to school districts and the MPO list.
- c. Kronenwetter – discussing projects with Mosinee, including closing the gap to the Kronenwetter trail.
- d. Schofield – working on property acquisition for the TAP project. Tentative construction in 2022 but may be delayed until 2023.
- e. Rib Mountain: The Town had more 3' is the Law signs. Encourages other communities to do the same and has a digital proof if needed. Lilac Ave concept plan does include a paved trail and roundabout. There is a May 25th public meeting.

8. ITEMS FOR THE NEXT AGENDA

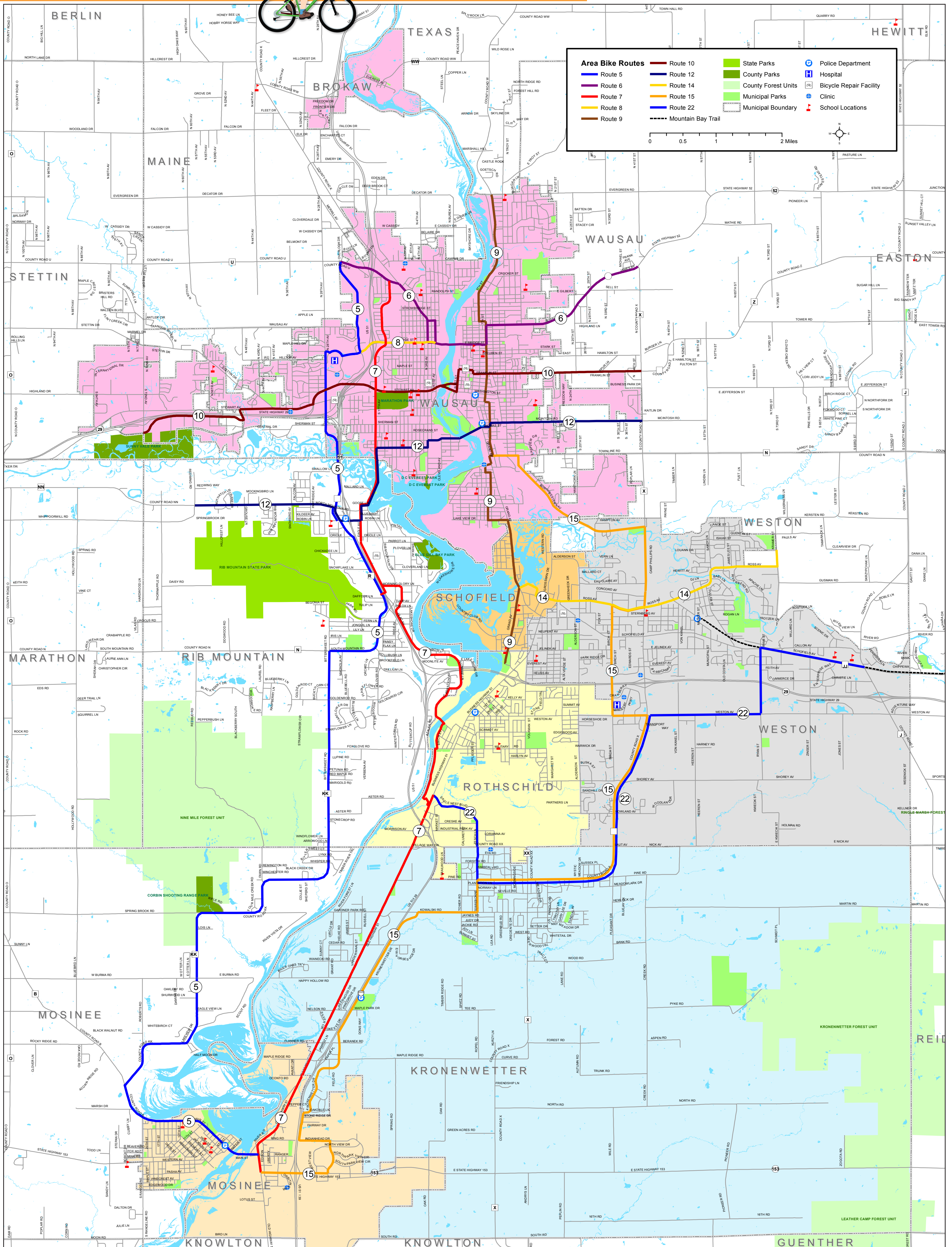
9. NEXT MEETING DATE – TBD

10. ADJOURN

Motion/second by BEATTY/MULLALY to adjourn the meeting. Motion **carried** by voice vote, no dissent. Meeting Adjourned at 6:45 pm.

Submitted by:
David Mack
Program Manager/MPO Director
Marathon County
Conservation, Planning and Zoning/Wausau MPO

Wausau Area Bike Map



Wausau Area Bike Map

Area Bike Routes

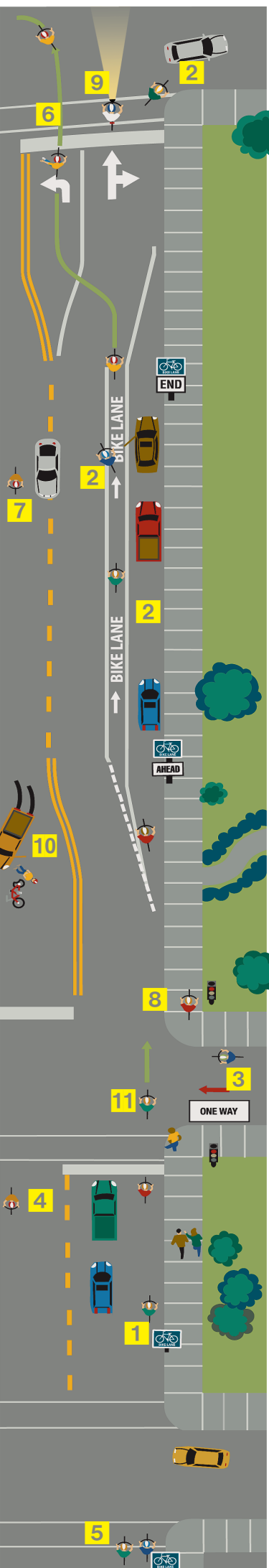
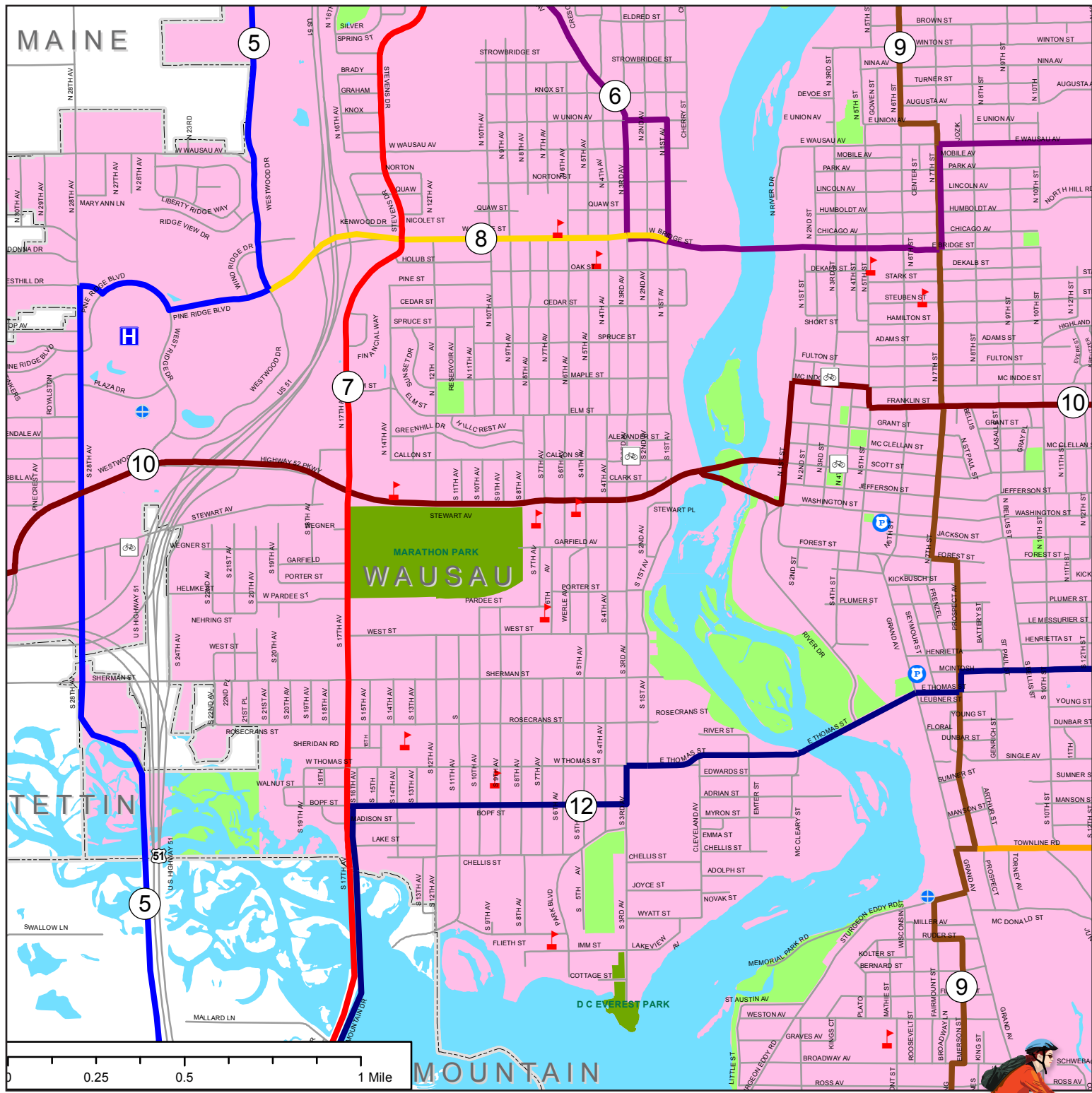
- Local Bike Route
- Existing Off Street Path
- Proposed On Street Bike Route
- Proposed Off Street Path
- Mountain Bay Trail

State Parks

- County Parks
- County Forest Units
- Municipal Parks
- Municipal Boundary

Police Department

- Hospital
- Bike Repair Facility
- Clinic
- School Locations



Wisconsin Bicycle Laws

Wisconsin Department of Transportation • Pedestrian/Bicycle Safety Program
Summarized from State Statutes

1. Vehicular Status

The bicycle is defined as a vehicle. The operator of a vehicle is granted the same rights and subject to the same duties of the driver of any other vehicle.

2. Lane Positioning

Always ride on the right, in the same direction as other traffic. Ride as far to the right as practicable – safe and reasonable, not as far right as possible.

There are situations when it is not practicable to ride far to the right:

- When overtaking and passing another vehicle traveling in the same direction.
- When preparing for a left turn at an intersection or driveway.
- When reasonably necessary to avoid unsafe conditions, including fixed or moving objects, parked or moving vehicles, pedestrians, animals, surface hazards or substandard width lanes – a lane that is too narrow for a bicycle and a motor vehicle to travel safely side by side within the lane.

3. One Way Streets

Bicycles on a one-way street with two or more lanes of traffic may ride as near the left-hand or right-hand edge or curb of the roadway as practicable; and in the same direction as traffic.

4. Use of Shoulders

Bicycles may be ridden, but are not required, to ride on the shoulder of a highway unless prohibited by local ordinance.

5. Riding Two Aboard

Riding two abreast is permitted on any street as long as other traffic is not impeded. When riding two abreast on a two or more lane roadway, both bicycles have to ride within a single lane.

6. Hand Signals

Bicyclists are required to use the same hand signals as motorists. Hand signals are required within 50 feet of your turn. It is not required continuously if you need both hands to control the bicycle.

7. Passing

A motorist passing a bicyclist in the same lane is required to give the bicyclist at least 3 feet of clearance, and to maintain that clearance until safely past.

A bicyclist passing a stopped or moving vehicle is also required to give at least 3 feet of clearance when passing.

8. Use of Sidewalks

State Statutes allow local units of government to permit vehicles on sidewalks through local ordinances, e.g., Grand Avenue in the City of Wausau.

When bicycles are allowed to be operated on sidewalks, bicyclists must yield to pedestrians and give an audible warning when passing pedestrians traveling in the same direction. At intersections and other sidewalk crossings (alleys, driveways), a bicyclist on the sidewalk has the same rights and duties as pedestrians.

9. Bicycling at Night

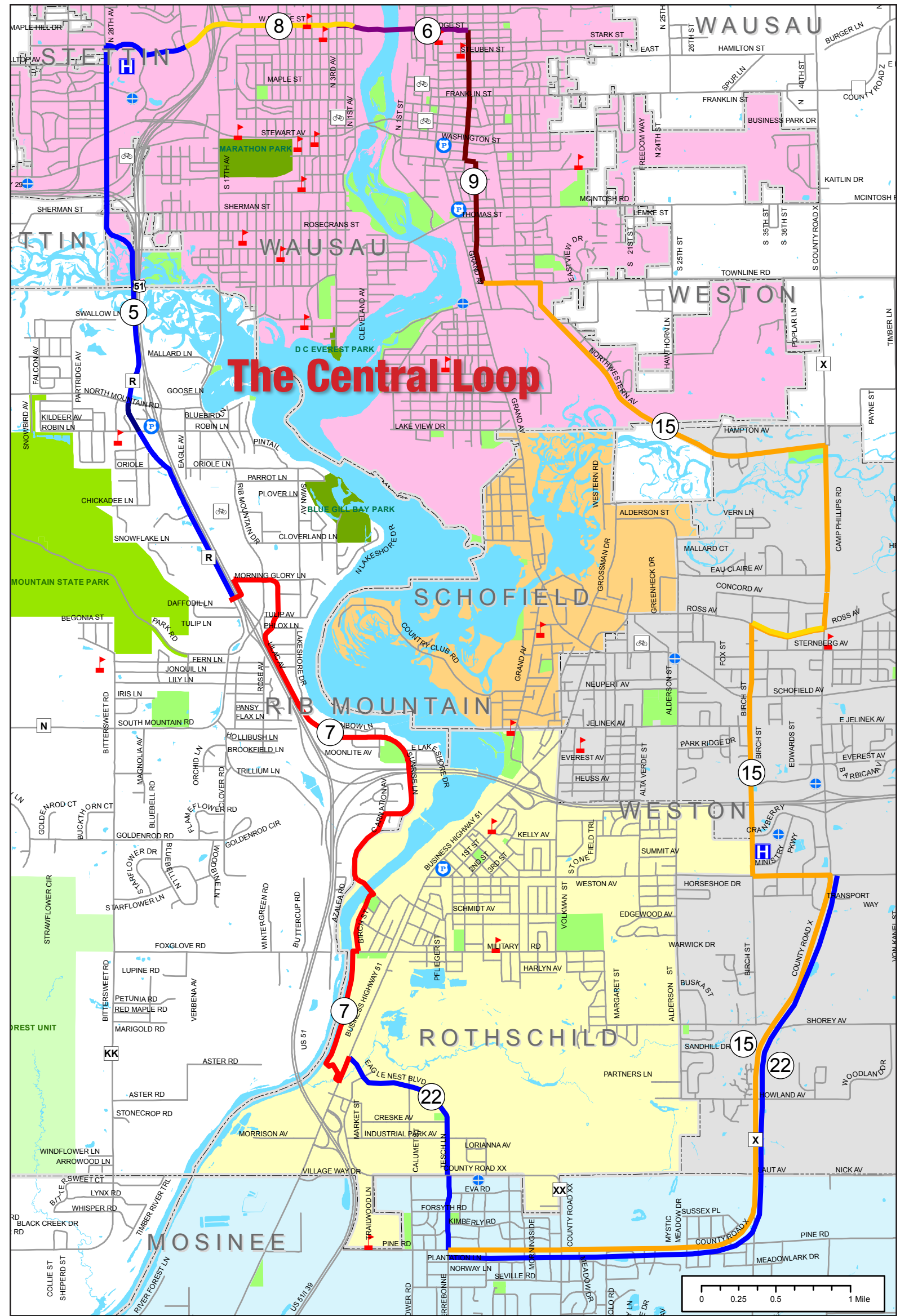
Bicycling at night requires at least a white front headlight and a red rear reflector. The white front light must be visible to others at least 500 feet away. The red rear reflector must be visible to others between 50 and 500 feet away. A red steady or flashing rear light may be used in place of the required reflector. These are required no matter where you ride – street, path or sidewalk.

10. Duty to Report Accident

The operator involved in an accident resulting in injury to or death of any person, or total property damage owned by any one person of \$1,000 or more shall immediately give notice of such accident to the police. Injury means injury to a person of a physical nature resulting in death or the need for first aid or attention by medical personnel, whether or not first aid or medical treatment was actually received. This section does not apply to accidents involving only vehicles propelled by human power.

11. Red Traffic Signals

A new state law allows a bicyclist facing a red signal at an intersection, after stopping as required, for not less than 45 seconds, to proceed cautiously through the intersection before the signal turns green if no other vehicles are present at the intersection. The bicyclist shall yield the right-of-way to any vehicular traffic when proceeding through the green signal at the intersection.



Ride With Us

We invite you to bicycle the Metro Bike Route System.

For more information contact: bicyclerwausaui.org
Wausau/Central Wisconsin Convention & Visitors Bureau
888.WI.VISIT (888.948.4748) – visitwausaui.com
Wausau Wheelers Bike Club – wausauiwheelers.org
Friends of the Mountain Bay Trail – mountain-baytrail.org

Ride In Our Communities

Route #	Location of Route	Miles
Route 5	Wausau, Rib Mountain, Mosinee	19.75
Route 6	Wausau	6.3
Route 7	Wausau, Rothschild, Rib Mountain, Kronenwetter, Mosinee	17.1
Route 8	Wausau	1.2
Route 9	Wausau, Schofield	8.2
Route 10	Wausau	8.57
Route 12	Wausau, Rib Mountain	8.2
Route 14	Schofield, Weston	4.6
Route 15	Wausau, Weston, Kronenwetter	20.85
Route 22	Rothschild, Kronenwetter, Weston	10.5
	Total Miles	106.19

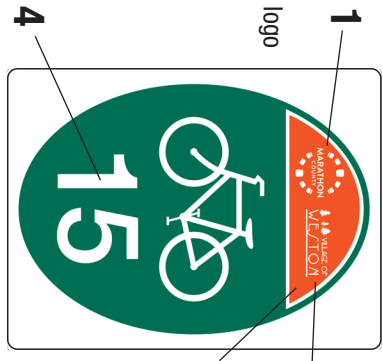
Wausau Area Bike Repair Shops

- Butler's Cycle and Fitness Center**
215 South 3rd Avenue
Wausau, WI 54403
715.842.4185
- Shepherd & Schaller Sporting Goods, Inc.**
324 Scott Street
Wausau, WI 54401
715.845.5432
- Trek Store of Wausau**
2601 Stewart Avenue
Wausau, WI 54401
715.845.7433
- City Bike Works**
908 North 3rd Street
Wausau, WI 54403
715.845.1656
- Sprocketz Bike Shop**
2106 Schofield Avenue, Ste 3
Weston, WI 54476
715.359.7600
- Rib Mountain Cycles**
3716 Rib Mountain Drive
Wausau, WI 54401
715.359.3925

Follow the Signs

Metro Bike Routes are marked with custom signs. Each route has a distinct number and color that is keyed to the map.

All signs display Marathon County's "Central Time" logo. As you travel, you will also see the logo for the municipality in which the route is located.



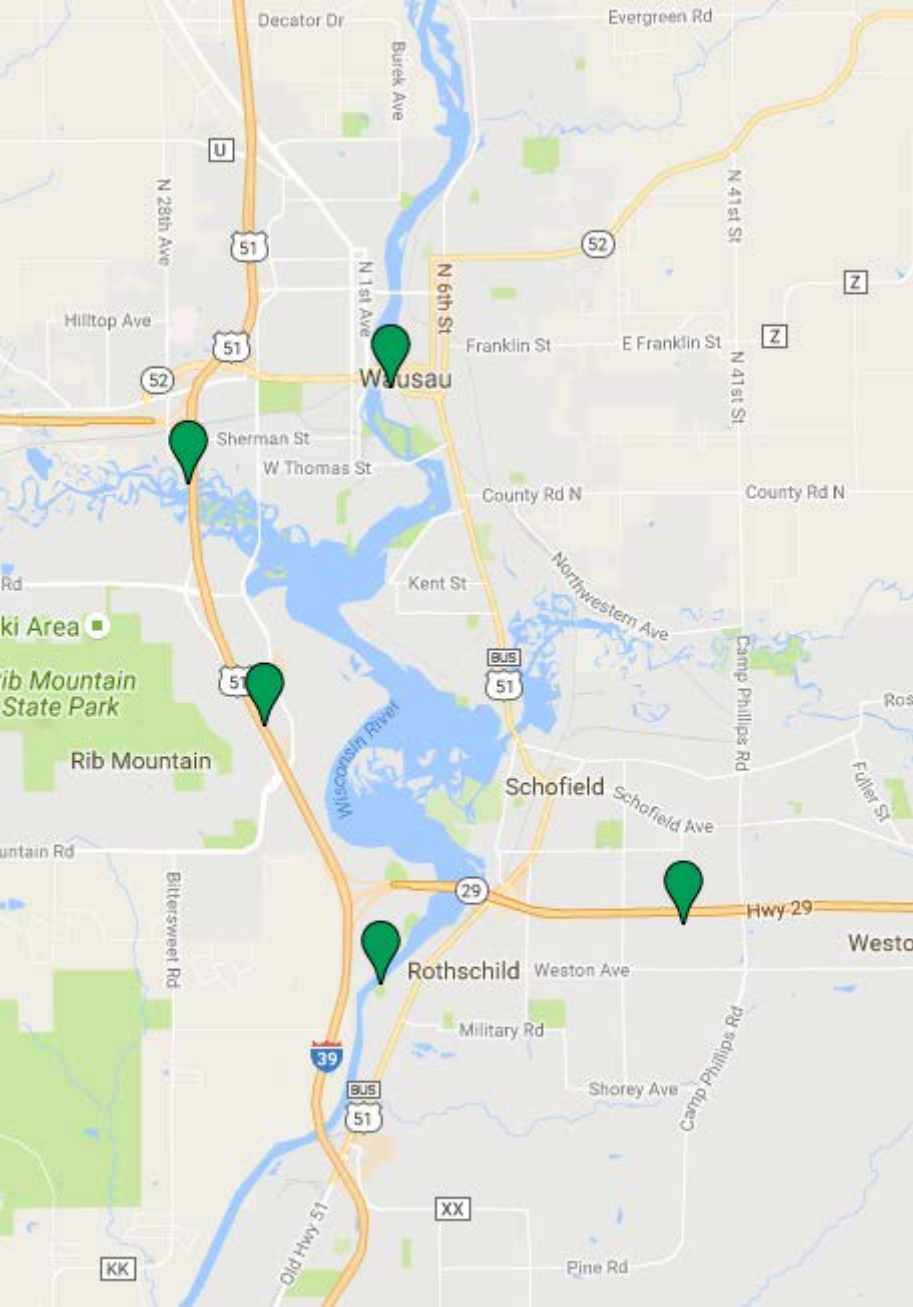
The Central Loop

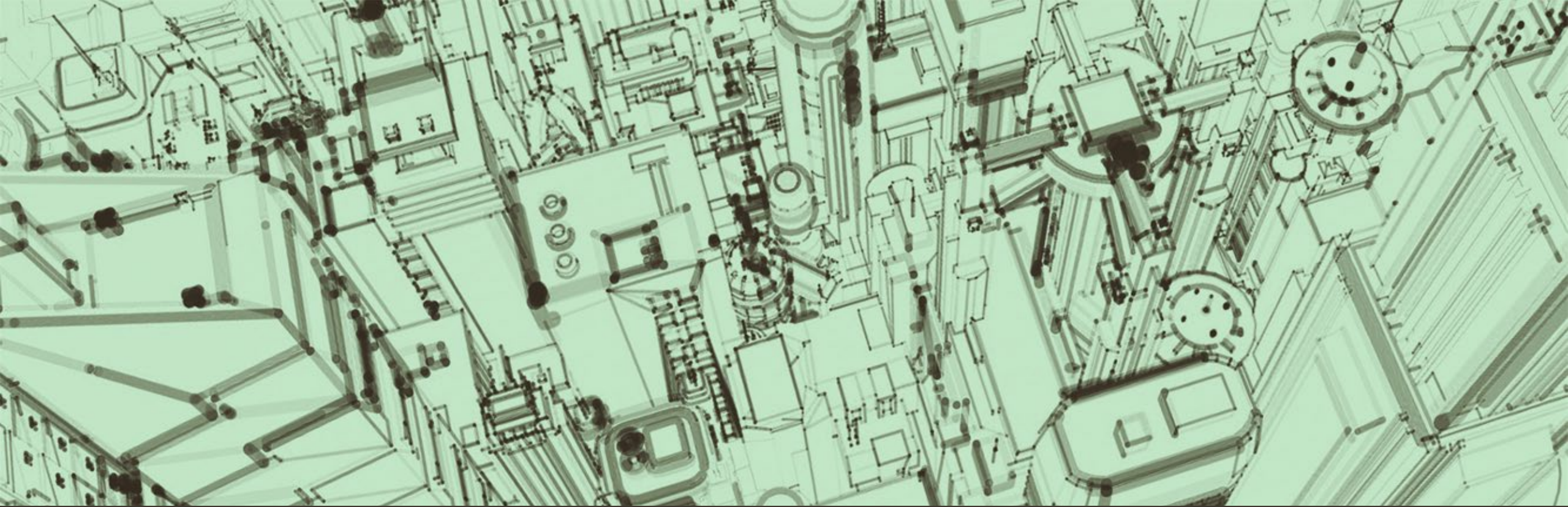
This 26-mile route includes sections of other routes and features unique metro community bike facilities.



Central Loop arrows will guide you.







Bike and Pedestrian Committee Survey Results

Wausau MPO – March 2023



Question 1

- The group I represent is (Private Citizen, Business, Government Agency, Local Group, Etc):
 - 9 Local Government
 - 1 Healthcare Facility
 - 2 Local Business
 - 1 Private Citizen
 - 1 Engineering Consultant

Question 2

- Our group is committed to having a representative attend the Wausau MPO Bike and Pedestrian Committee meetings:

Monthly	Quarterly	Semi-Annually
4	7	3
29%	50%	21%

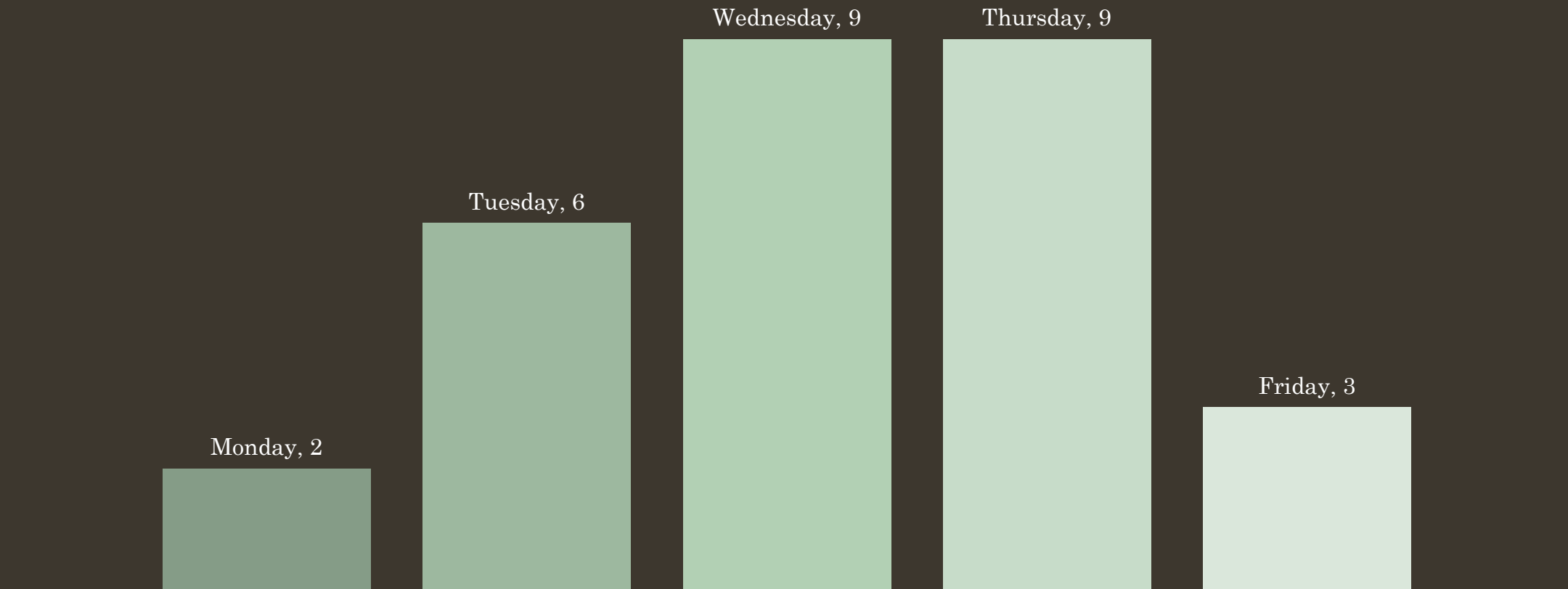
Question 3

- We are more likely to attend the Bike and Pedestrian Committee meetings if they are held on a weekday during:

Morning (8-12am)	Afternoon (12-4pm)	Evening (After 5pm)
7	7	3
41%	41%	18%

Question 4

We are more likely to attend the Bike and Pedestrian Committee meetings if they are held on:



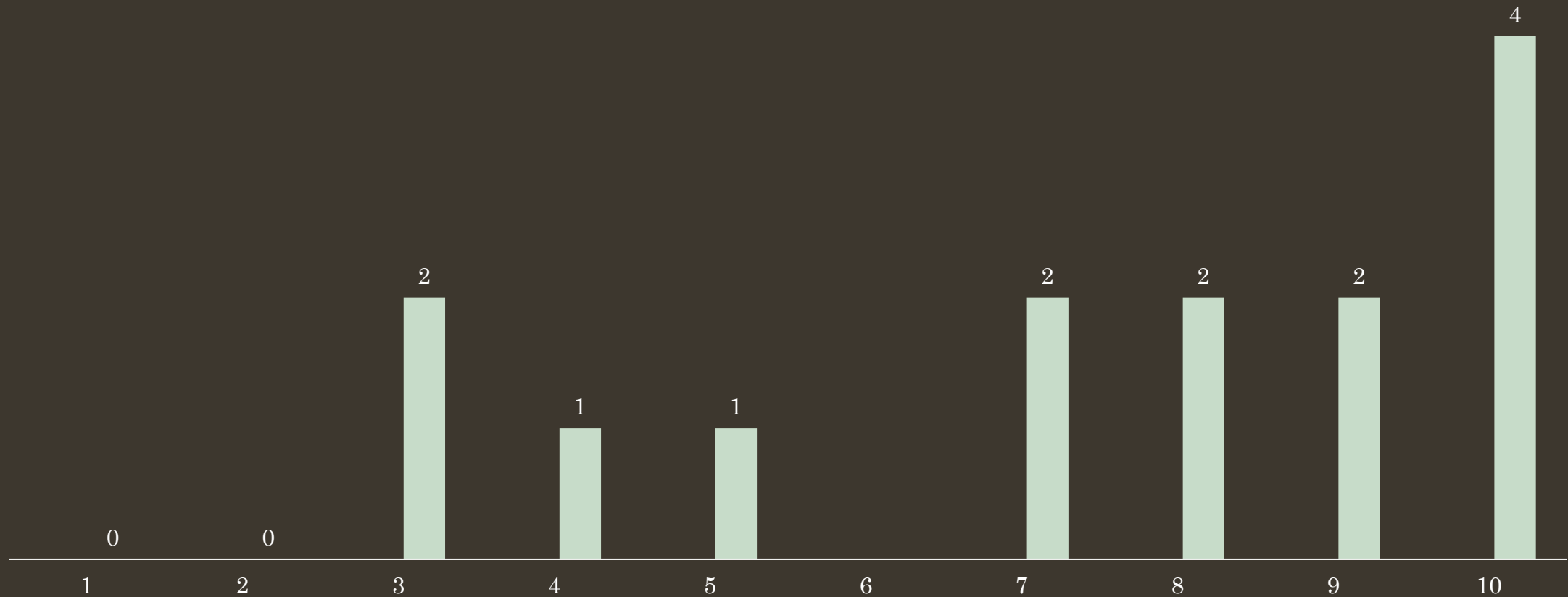
Question 5

- We are most likely to attend the Bike and Pedestrian Committee meetings via:

Web Program	In-Person
5	8
38%	62%

Question 6

On a scale of 1-10, how interested are you in continuing to have Bike and Pedestrian Committee meetings (10 being very interested and 1 not interested):



Question 7

- What should the main purpose/function of this committee be?
 - Planning for community interconnectivity, and strategies funding opportunity.
 - To collaborate with other Communities and attain our goals collectively.
 - Promote facilities for the highest amount of users.
 - Improve bike and pedestrian safety through infrastructure improvements and systems-level change.
 - Safety and Connectivity.
 - Route connectivity, ways to improve the system, regional routes, planning, grant funding, develop ways to make walking/cycling more appealing.
 - Long range regional planning and tactical urbanism for experimentation/ideation without wasting larger sums of money.
 - Safe complete bike route.
 - Safe biking and walking routes and how to connect the routes throughout the MPO boundaries.
 - Set vision - plan – execute.
 - Insure that all routes are well marked and special events are noted well in advance.
 - Moving infrastructure forward, educating the public to the benefits of the infrastructure.

Question 8

- What approach can be taken by the MPO to ensure greater participation in the Bike and Pedestrian Committee meetings?
 - Get the information out to the public via multiple medias more frequently.
 - Make it part of the diction process, not a rubber stamp group.
 - Get things done.
 - Starting to tackle specific projects to make some progress on the plan.
 - A boots on the ground approach to talk with folks who utilize existing infrastructure in the municipalities for their input and ideas.
 - Improve awareness, City/Town/Village outreach, post meetings at bike shops and parks.
 - Snacks, light eats and social time?
 - Stressing the importance of having the communities work together for long range planning, etc.
 - My experience with the committee is that it's been very bike focused, particularly toward avid cyclists for recreation purposes. I think more attention needs to be paid on the pedestrian side, as well as on things that impact people with limited resources who rely on biking for transportation.