

OFFICIAL NOTICE AND AGENDA

of a meeting of the County Board, Committee, Agency,
Corporation or Sub-Unit thereof,

COUNTY OF MARATHON
WAUSAU, WI 54403

**MARATHON COUNTY METROPOLITAN PLANNING COMMISSION'S
BICYCLE AND PEDESTRIAN SUB-COMMITTEE
AGENDA**

April 28, 2022
5:30 P.M.

LARGE CONFERENCE ROOM
210 RIVER DRIVE, WAUSAU, WI

Marathon County Mission Statement: *Marathon County Government serves people by leading, coordinating, and providing county, regional, and statewide initiatives. It directly or in cooperation with other public and private partners provides services and creates opportunities that make Marathon County and the surrounding area a preferred place to live, work, visit, and do business. (Last updated: 12-20-05)*

Commission Purpose: *The Commission shall be concerned with studies and recommendations relating to activities including but not limited to land-use; natural resources; utilities; and transportation systems within the metropolitan planning area. (Commission Bylaws last updated: 12-18)*

The meeting site identified above will be open to the public. However, due to the COVID-19 pandemic and associated public health directives, Wausau MPO encourages Bicycle & Pedestrian Committee members and the public to attend this meeting remotely. To this end, instead of attendance in person, Bicycle & Pedestrian Committee members and the public may attend this meeting by telephone conference. If Bicycle & Pedestrian Committee members or members of the public cannot attend remotely, Wausau MPO requests that appropriate safety measures, including adequate social distancing, be utilized by all in-person attendees.

Persons wishing to attend the meeting by phone may call into the telephone conference **beginning five (5) minutes prior to the start time indicated above using the following number:**

Phone: 1-408-418-9388

Access Code: 965 620 244

If you are prompted to provide an "Attendee Identification Number," enter the "#" sign. No other number is required to participate in the telephone conference.

When you enter the telephone conference, PLEASE PUT YOUR PHONE ON MUTE!

AGENDA ITEMS:

- 1. CALL TO ORDER
- 2. WELCOME AND INTRODUCTIONS

POLICY DISCUSSION AND POSSIBLE ACTION:

- 3. APPROVE THE MINUTES OF THE JANUARY 27, 2022 MEETING
- 4. BIPARTISAN INFRASTRUCTRE LAW (BIL) UPDATE
 - a. FFY22 STP PROJECT APPLICATIONS
 - b. NEW FUNDING: CARBON REDUCTION PROGRAM
 - c. TAP APPLICATIONS: JUNE AND AUGUST 2022

5. INPUT ON COUNTY HIGHWAY N TRAIL CONCEPT IN RIB MOUNTAIN
6. FUTURE PROJECTS FOR COMMITTEE
7. COMMUNITY UPDATES AND AREAS OF CONCERN
8. ITEMS FOR FUTURE AGENDA
9. NEXT MEETING DATE – TBD
10. ADJOURN

Any person planning to attend this meeting who needs some type of special accommodation in order to participate should call the County Clerk's Office at 715-261-1500 or e-mail infomarathon@mail.co.marathon.wi.us one business day before the meeting.

SIGNED



PRESIDING OFFICER OR DESIGNEE

EMAILED TO: Daily Herald; City Pages; Marshfield News

NOTICE POSTED AT COURTHOUSE:

EMAILED TO: Mid-west Radio Group; TPP Printing

EMAILED BY: BI _____

By: _____

EMAILED DATE: 04/21/2022

Date: _____

EMAILED TIME: 3:45pm

Time: _____ a.m/p.m.

MARATHON COUNTY METROPOLITAN PLANNING COMMISSION
Bicycle and Pedestrian Sub-Committee
Minutes – January 27, 2022

Members: John Nowaczyk, Chair, Mark Thuot, John Beatty, Tom Mullaly, Dennis Helke, Todd Treu
Staff: Andrew Lynch

1. CALL TO ORDER

Meeting called to order by Chairperson NOWACZYK at 5:31pm

2. WELCOME AND INTRODUCTIONS

3. APPROVE THE MINUTES OF AUGUST 26, 2021 MEETING

Motion/second by MULLALY/BEATTY to approve the meeting minutes from the August 26 meeting.
Motion **carried** by voice vote, no dissent.

4. INFRASTRUCTURE INVESTMENT AND JOBS ACT (IIJA) – LOCAL IMPACT

LYNCH highlighted the new Federal infrastructure bill and the many changes and opportunities for transportation and bicycle pedestrian funding. Due to the short time since the bill was signed into law, there was not much detail available at this time.

5. TRANSPORTATION ALTERNATIVES PROGRAM (TAP) – RANKING PROJECTS

LYNCH presented the two projects that applied for TAP funding. The City of Schofield bridge over Bus 51, and the Wausau Industrial Park Trail. The committee examined the projects and ranked the City of Schofield as number one, and the Wausau project as number 2. These rankings will be sent to the Technical Advisory Committee and eventually WisDOT as part of the application process.

6. MARATHON COUNTY BICYCLE ADVISORY ON 2022 SAFETY PROJECTS

LYNCH shared the County's request for input from the bicycle community on the use of shoulder rumble strips on CTH Z. The Committee, after debate, concluded that the preferred treatment was no shoulder rumble strips. Staff will communicate this to the County Highway department.

7. MEETING SCHEDULE FOR 2022

LYNCH suggested that meetings be held every other month due to staff workload. The committee agreed.

8. COMMUNITY UPDATES AND FUTURE EVENTS

- a. Notes not available for this item.

9. ITEMS FOR THE NEXT AGENDA

10. NEXT MEETING DATE – MARCH 2022

11. ADJOURN

Motion/second by BEATTY/HELKE to adjourn the meeting. Motion **carried** by voice vote, no dissent.
Meeting Adjourned at 7:10 pm.

Submitted by:
David Mack
Program Manager/MPO Director
Marathon County
Conservation, Planning and Zoning/Wausau MPO



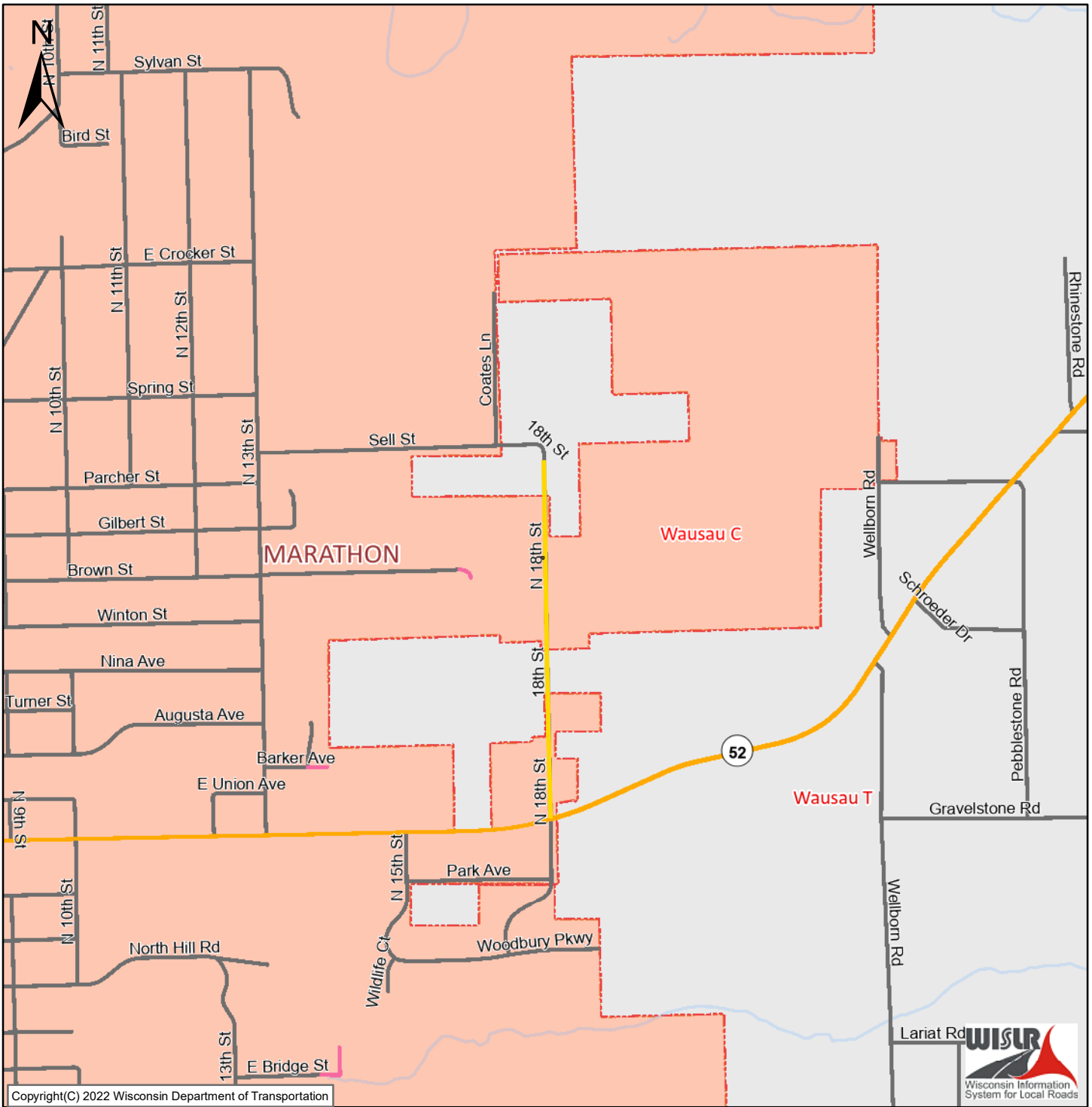
BIL Update – Projects for FFY22

Two municipalities, Village of Weston and City of Wausau submitted projects for FFY22 funding available under the Bipartisan Infrastructure Law. The criteria placed on these funds, to facilitate a quick and simple project, did limit the options in the MPO area. Maps of the projects are on the following pages.

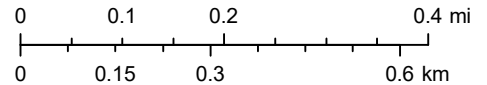
Village of Weston
Northwestern Ave
Between CTH X and Village limits

City of Wausau
18th Street
Between Wausau Ave and Sell St

N 18th St



The information contained in this data set and information produced from this dataset were created for the official use of the Wisconsin Department of Transportation (WisDOT). Any other use while not prohibited, is the sole responsibility of the user. WisDOT expressly disclaims all liability regarding fitness of use of the information for other than official WisDOT business. Map created on April 1, 2022



wislr-fl1

— Poor

—+ Railroads

State Trunk Network

— Interstate Highway

— USH Highway

— USH Connecting Highway

— State Trunk Highways

— STH Connecting Highways

— On-Off Ramp

— Connector

— Frontage Road

— Wayside

— Rest Area

— Weigh Station

County Roads

--- County Trunk Hwy

--- County Forest Roads

--- Other County Roads

Local Roads

— Municipal/Local Roads

— Ineligible Roads

— Rivers

— Lakes

Cities/Villages/Towns

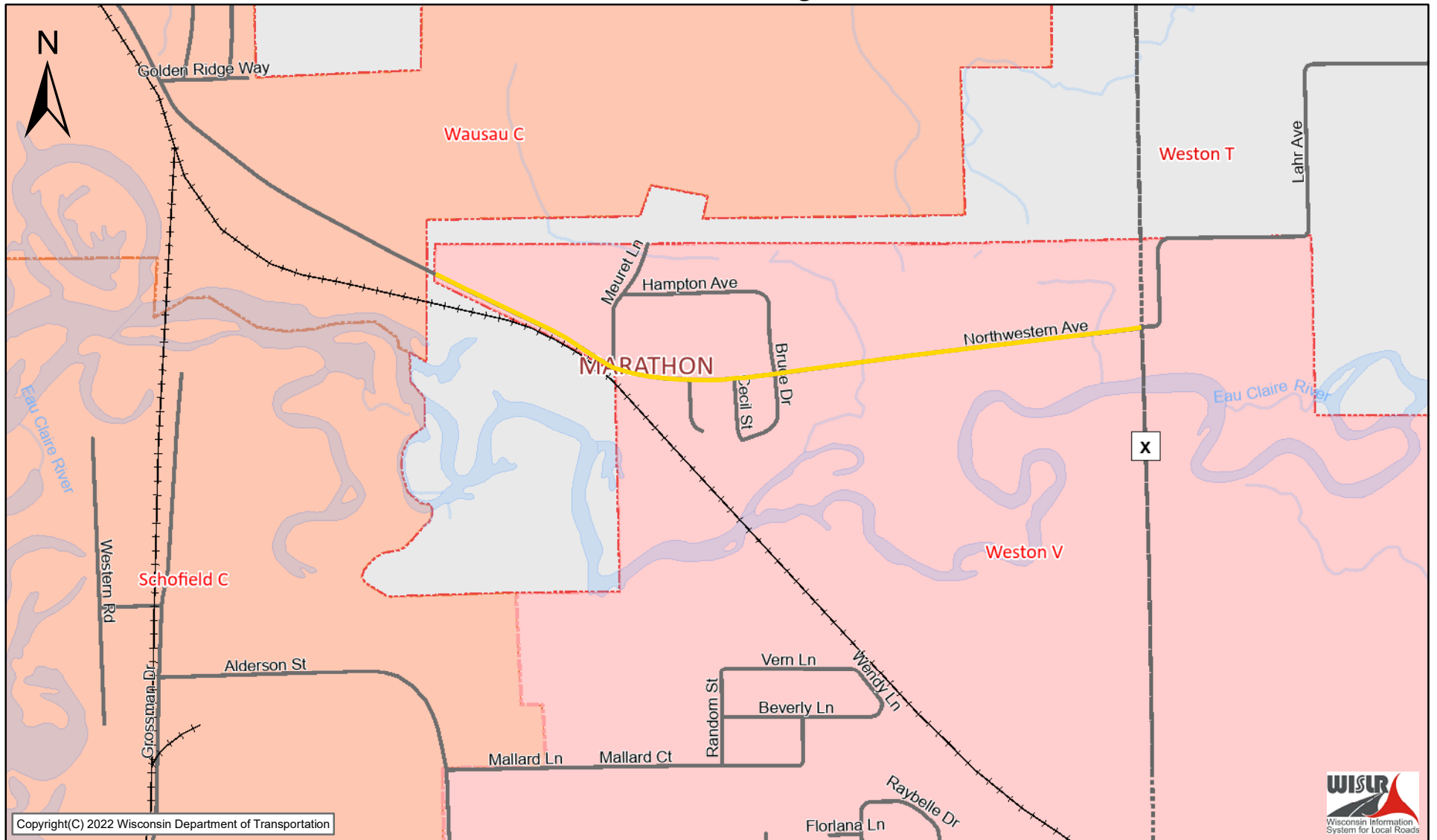
— City

— Village

— Town

— Counties

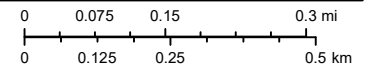
Northwestern Ave - Village of Weston



Copyright(C) 2022 Wisconsin Department of Transportation



The information contained in this data set and information produced from this dataset were created for the official use of the Wisconsin Department of Transportation (WisDOT). Any other use while not prohibited, is the sole responsibility of the user. WisDOT expressly disclaims all liability regarding fitness of use of the information for other than official WisDOT business. Map created on March 15, 2022



- | | | | | |
|----------------------------------------------------------------------------------------------------------------------------------------------------------------------------------------------------------------------------|------------------------------------------------------------------------------------------------------------------------------------------------------------------------------------------|-----------------------------------------------------------------------------------------------------------------------------------------------------------------------------------------------|----------------------------------------------------------------------------------------------------------------------------------------------------------------------|-------------------------------------------------------------------------------------------------------------------------------------------------------|
| <ul style="list-style-type: none"> —+— Railroads State Trunk Network — Interstate Highway — USH Highway — USH Connecting Highway — State Trunk Highways | <ul style="list-style-type: none"> — STH Connecting Highways — On-Off Ramp — Connector — Frontage Road — Wayside — Rest Area | <ul style="list-style-type: none"> — Weigh Station County Roads --- County Trunk Hwy --- County Forest Roads --- Other County Roads | <ul style="list-style-type: none"> Local Roads — Municipal/Local Roads — Ineligible Roads — Rivers — Lakes | <ul style="list-style-type: none"> Cities/Villages/Towns — City — Village — Town — Counties |
|----------------------------------------------------------------------------------------------------------------------------------------------------------------------------------------------------------------------------|------------------------------------------------------------------------------------------------------------------------------------------------------------------------------------------|-----------------------------------------------------------------------------------------------------------------------------------------------------------------------------------------------|----------------------------------------------------------------------------------------------------------------------------------------------------------------------|-------------------------------------------------------------------------------------------------------------------------------------------------------|

Carbon Reduction Program Announcement

4/11/2022

Background

- The Bipartisan Infrastructure Law of 2021 (BIL) establishes a Carbon Reduction Program. This new federal program provides funding for projects that reduce transportation emissions and requires states to develop comprehensive carbon reduction strategies.
- Wisconsin's Federal Fiscal Year (FFY) 2022 estimated suballocation requirement for the Carbon Reduction Program is \$15.6M.
- The federal cost share on projects eligible for Carbon Reduction funding is 80 percent and 20 percent local share. Projects in areas over 200,000 population must be selected in coordination with the metropolitan planning organization that represents the urbanized area prior to obligating funding.
- This solicitation is to obligate funds to meet the FFY22 draft apportionments.

FFY 2022 Draft Apportionments

Population	Over 200K	50K – 200K	5K – 50K	< 5K
Federal Funding	\$6,111,075	\$2,578,811	\$1,791,560	\$5,091,611

- WisDOT will utilize an expedited process to ensure that available funds are obligated by 9/30/22.
- TMAs representing population areas over 200,000 and MPOs representing population areas between 50,000 and 200,000 will pick their projects (\$8,689,886 of FFY22 funding) that meet eligibility guidelines for the Carbon Reduction Program.
 - MPOs should coordinate applications and submit selected projects to WisDOT by June 1st.

Population Areas > 200K		Population 50K ≤ Areas ≤ 200K	
TOTAL	\$ 6,111,075	TOTAL	\$ 2,578,811
Appleton	\$ 591,909	Beloit	\$ 123,563
Green Bay	\$ 565,528	Duluth	\$ 74,059
Madison	\$ 1,099,895	Eau Claire	\$ 281,647
Milwaukee	\$ 3,769,297	Fond du Lac	\$ 150,339
Minneapolis--St. Paul	\$ 756	Janesville	\$ 190,749
Round Lake Beach	\$ 83,690	Kenosha	\$ 339,722
		La Crosse	\$ 261,541
		Oshkosh	\$ 203,995
		Racine	\$ 366,120
		Sheboygan	\$ 195,281
		Wausau	\$ 204,370
		West Bend	\$ 187,425

- For population areas less than 50,000 (\$6,883,171 of FFY22 funding), local units of government submit applications to WisDOT Regions (see end of document for a list of contacts).
 - Applications must include project cost estimate showing project cost eligible for federal reimbursement. The federal cost share is 80 percent and 20 percent local share.
 - WisDOT reviews and picks projects utilizing a discretionary selection committee structure similar to the Transportation Alternatives Program (TAP).
 - Project award announcements are anticipated in June 2022.

Timeline

- **Week of April 11** – Carbon Reduction Program solicitation distributed to locals (Guidelines, Application, Application Instructions)
- **Week of April 18** – WisDOT holds informational webinar for Carbon Reduction Program
- **May 6, 2022** – Carbon Reduction Program application deadline
- **May 2022** – Project Selection
- **June 2022** – Project Awards

Project Eligibility

- Note Aug 1 PS&E would be required for all FFY22 construction projects.
- The following project activities are listed in the BIL as eligible for Carbon Reduction Program funding:
 - Establishment or operation of a traffic monitoring, management, and control facility or program, including advanced truck stop electrification systems ([23 USC, Section 149\(b\)\(4\)](#));
 - A public transportation project that is eligible for federal assistance (23 USC, Section 142);
 - Construction, planning, and design of on- or off-road trail facilities for pedestrians and bicyclists;
 - Advanced transportation and congestion management technologies ([23 USC, Section 503\(c\)\(4\)\(E\)](#));
 - Deployment of infrastructure-based intelligent transportation systems capital improvements and the installation of vehicle-to-infrastructure communications systems;
 - Replacement of street lighting and traffic control devices with energy-efficient alternatives;
 - Congestion pricing, shifting transportation demand to non-peak hours or other transportation modes, increasing vehicle occupancy rates, or otherwise reducing demand for roads, including electronic toll collection and transportation demand management strategies;
 - Efforts to reduce environmental and community impacts of freight movements;
 - Deployment of alternative fuel vehicles and charging/fueling infrastructure;
 - Purchase or lease of zero-emissions construction equipment and vehicles;
 - Diesel engine retrofit projects as described in [23 USC, Section 149\(b\)\(8\)](#);
 - A project that does not result in the construction of new capacity ([23 USC, Section 149\(b\)\(5\)](#));
 - Reduction of transportation emissions at port facilities, including through the advancement of port electrification; and
 - Projects eligible under the federal Surface Transportation Block Grant Program (23 USC, Section 133(b)), if the US DOT secretary certifies that the project will reduce transportation emissions.

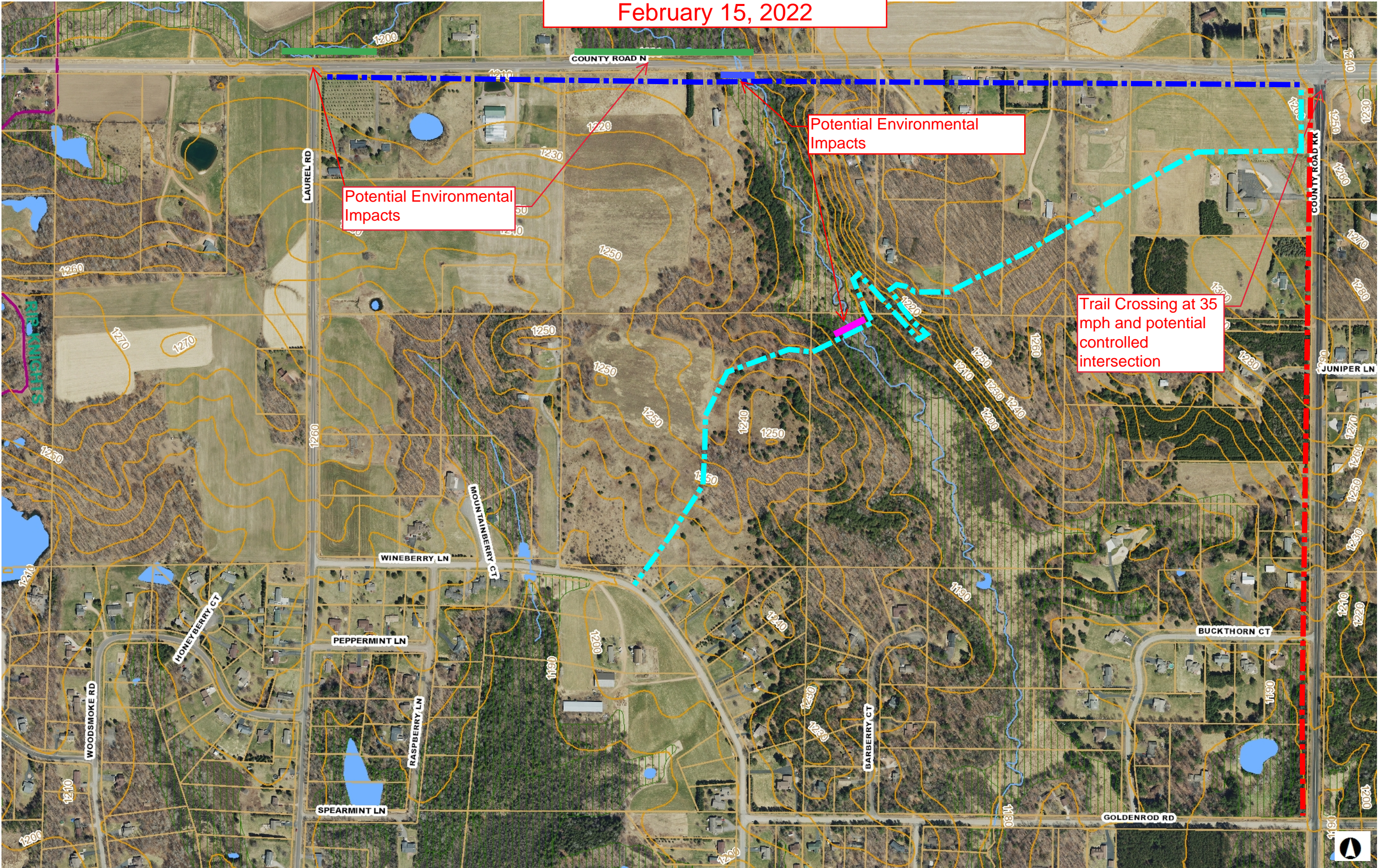
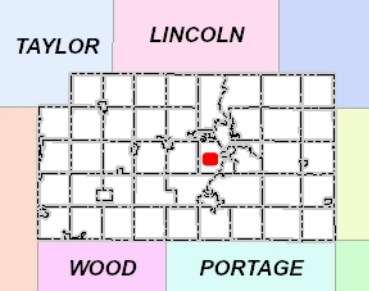
WisDOT Contacts

To determine which region should receive your application, consult the WisDOT region map

<http://wisconsin.gov/Pages/about-wisdot/who-we-are/dtsd/dtsd-region-offices.aspx>.

WisDOT Region	Contact	Phone	Email
SE Region	Jacob Varnes	(262) 548-8789	jacob.varnes@dot.wi.gov
SW Region	Michael Erickson	(608) 246-5361	michael.erickson@dot.wi.gov
NW Region	Randy Kirk	(715) 392-7860	randall.kirk@dot.wi.gov
NC Region	Ben Roskoskey	(715) 365-5783	benjamin.roskoskey@dot.wi.gov
NE Region	Alex Dums	(920) 492-5707	alex.dums@dot.wi.gov
Statewide	Kia Her	(608) 267-7350	kia.her@dot.wi.gov

**County Highway N Trail
Preliminary Concepts
February 15, 2022**



Potential Environmental Impacts

Potential Environmental Impacts

Trail Crossing at 35 mph and potential controlled intersection

- Legend**
- Road Names
 - Parcels
 - Parcel Lot Lines
 - Land Hooks
 - Named Places
 - Municipalities
 - USGS 10ft Contours
 - Streams-Rivers
 - Lake-Ponds
 - Snowmobile Trails
 - MC Trail
 - Non MC Trail
 - ATV-UTV Roads
 - State Rec Areas
 - County Forest Units
 - County Parks
 - DNR Wetland Areas
 - 2020 Orthos Countywide
 - Red: Band_1
 - Green: Band_2
 - Blue: Band_3

250.00 0 250.00 Feet
NAD_1983_HARN_WISCRS_Marathon_County_Feet

DISCLAIMER: The information and depictions herein are for informational purposes and Marathon County-City of Wausau specifically disclaims accuracy in this reproduction and specifically admonishes and advises that if specific and precise accuracy is required, the same should be determined by procurement of certified maps, surveys, plats, Flood Insurance Studies, or other official means. Marathon County-City of Wausau will not be responsible for any damages which result from third party use of the information and depictions herein or for use which ignores this warning.

THIS MAP IS NOT TO BE USED FOR NAVIGATION

Notes