



WAUSAU METROPOLITAN
PLANNING ORGANIZATION

TRANSPORTATION IMPROVEMENT PROGRAM

WAUSAU, WISCONSIN METROPOLITAN AREA

2018 - 2021

MARATHON COUNTY METROPOLITAN PLANNING COMMISSION

November 2017



U.S. Department of Transportation
Federal Highway Administration



U.S. Department of Transportation
Federal Transit Administration

**WAUSAU METROPOLITAN PLANNING ORGANIZATION (MPO)
TRANSPORTATION IMPROVEMENT PROGRAM 2018-2021**

MARATHON COUNTY METROPOLITAN PLANNING COMMISSION

Robert Mielke	Mayor, City of Wausau
Chris Voll	President, Village of Kronenwetter
Jeff Weisenberger	President, Village of Brokaw
Betty Hoenisch	Chairman, Town of Maine
Steve Hagman	Chairman, Town of Mosinee
Allen Opall	Chairman, Town of Rib Mountain
Raynard Zunker	Chairman, Town of Stettin
John Prah	Chairman, Town of Wausau
Milton Olson	Chairman, Town of Weston
George Peterson, Vice Chairman	President, Village of Rothschild
Barbara J. Ermeling	President, Village of Weston
Brent Jacobson	Mayor, City of Mosinee
Kregg Hoehn	Mayor, City of Schofield
Kurt Kluck	Chairman, Marathon Co. Highway Committee
Russ Habeck	Director, WisDOT - North Central Region

MPO TECHNICAL ADVISORY COMMITTEE

Rebecca Frisch, Commission Sec./Dir.	Marathon Co. Conservation, Planning & Zoning Dept.
David Mack, Program Manager	Wausau MPO/Marathon County CPZ
Andrew Lynch, Transportation Planner	Wausau MPO/Marathon County CPZ
Jim Griesbach, Commissioner	Marathon County Highway Department
Brian Grefe, Manager	Central Wisconsin Airport
Darryl Landeau	North Central Wisconsin RPC
David Eckmann	Wausau Area Chamber of Commerce
Gaylene Rhoden, Administrator	Town of Rib Mountain
Scott Turner, Street & Parks Superintendent	Town of Rib Mountain
Richard Downey, Administrator	Village of Kronenwetter
Christopher Johnson, Public Works Director	Village of Kronenwetter
Randy Fifrick, Comm. Dev./Zoning Admin.	Village of Kronenwetter
Tim Vergara, Public Works Admin.	Village of Rothschild
Daniel Guild, Administrator	Village of Weston
Keith Donner, Public Works Admin.	Village of Weston
Jeff Gates, City Administrator	City of Mosinee
Mark Thuot, Public Works Admin.	City of Schofield
Eric Lindman, Public Works & Utilities Director	City of Wausau
Brad Lenz, City Planner	City of Wausau
Greg Seubert, Transit Director	Wausau Area Transit System
Dave Meurett	WisDOT – North Central Region
James Kuehn	WisDOT – Bureau of Planning
Matt Schreiber	WisDOT – Bureau of Planning
Mitch Batuzich	FHWA – Ex Officio Member
Marisol Simon	FTA – Ex Officio member

Marathon County Conservation, Planning and Zoning Department
210 River Drive
Wausau, WI 54403-5449
Phone: (715) 261-6040
Fax: (715) 261-6016

TABLE OF CONTENTS

Introduction	1
Fixing America’s Surface Transportation Act (FAST Act)	5
Policy for Approval of Transportation Improvement Programs	8
2018 – 2021 Transportation Improvement Program	15
Appendix A.....	A-1
Appendix B.....	B-1
Appendix C	C-1
Appendix D	D-1

INTRODUCTION

Federal laws and regulations mandate that urbanized areas over 50,000 in population develop and maintain a continuing, cooperative, and comprehensive transportation planning process to qualify for federal highway and transit monies. The planning process in these urbanized areas is administered by a Metropolitan Planning Organization (MPO). MPOs are required to develop a Transportation Improvement Program (TIP) and long range transportation plan for the area.

The 1980 Census indicated that the Wausau urbanized area population was 52,990, surpassing the 50,000 threshold for urban transportation planning requirements. The Marathon County Planning Commission was designated as the agent for the Wausau Metropolitan Planning Organization in 1983. In 1996, the Marathon County Planning Commission was renamed as the Marathon County Metropolitan Planning Commission.

The Marathon County Metropolitan Planning Commission reviews and approves the planning activities of the MPO including the TIP and long range transportation plan. The Marathon County Metropolitan Planning Commission is composed of the chief elected officials of the communities within the Wausau urbanized area and representatives of the agencies having jurisdiction over urban roadways within the urbanized area. Currently, the Marathon County Metropolitan Planning Commission includes representatives from the Cities of Schofield, Mosinee, and Wausau; the Villages of Brokaw, Kronenwetter, Maine, Rothschild, and Weston; and the Towns of Stettin, Rib Mountain, Wausau, Weston, and Mosinee; the Wisconsin Department of Transportation (WisDOT) – North Central Region, and the Marathon County Infrastructure Committee.

The federal highway bill, Fixing America's Surface Transportation (FAST Act), approved in December 2015 has regulations and guidance for highway, highway safety, and transit authorizations. The FAST Act continues to give the MPO the responsibility to develop a TIP and long range transportation plan for the area. Map 1 shows the identified Planning Boundary and Urbanized Area Boundary for the Wausau MPO area developed and approved in 2013.

The TIP lists the programmed projects in the MPO metropolitan area. The TIP must list all projects in the metropolitan area to be federally funded under Title 23 U.S.C. and 49 U.S.C., and may include projects to be funded entirely with state or local funds. New TIP development provisions in Section 134(j) (1)(A) indicate that:

- a) Projects must be consistent with the current Metro transportation plan,
- b) The TIP reflects investment priorities established in the plan,
- c) Once implemented, the TIP is designed to make progress toward achieving identified performance targets.

The TIP must also be updated at least every two years, though the Wausau MPO has historically updated the TIP every year. The TIP must be consistent with the transportation plan for the area and include at a minimum:

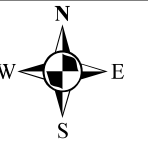
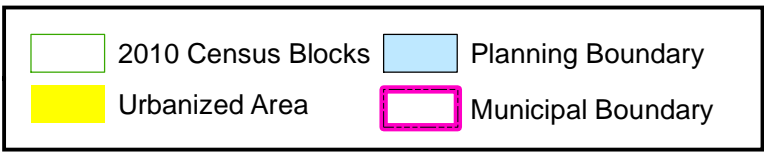
1. A prioritized list of projects and project segments to be carried out within each four-year period after initial adoption of the TIP; and
2. A financial plan that demonstrates how the TIP can be implemented, indicates resources from public and private sources that are reasonably expected to be made available to

carry out the TIP, and recommends any innovative financing techniques to finance needed projects and programs.

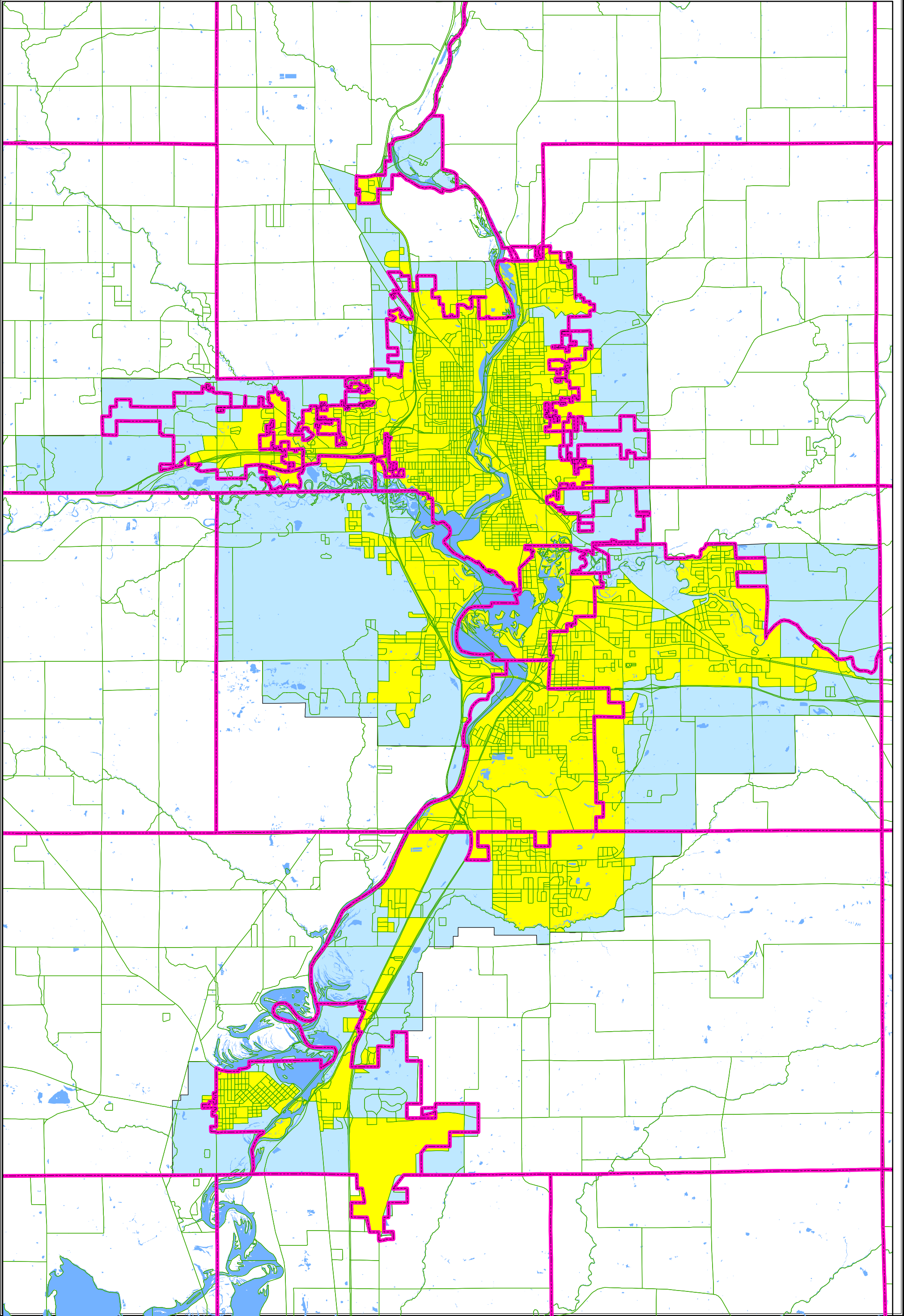
The TIP must be developed by the MPO in cooperation with the State, affected transit operators and local communities. Each community within the MPO is requested annually to submit a list of proposed transportation projects to be included in the TIP. The new Surface Transportation Block Grant Program (STBG) or the former Surface Transportation Program (STP)/Urban projects are prioritized by the Wausau MPO. *The Policy for Approval of Transportation Improvement Programs* assists the Marathon County Metropolitan Planning Commission in approving the projects to be programmed with STBG funds. WisDOT administers the other federal transportation programs in the state. The Marathon County Metropolitan Planning Commission locally approves the TIP and forwards it to state and federal agencies. The Secretary of WisDOT, acting for the Governor, also approves the TIP. The TIP is then made part of the State Transportation Improvement Program (STIP). The Wausau MPO provides citizens, affected public agencies, representatives of transportation agency employees, other affected employee representatives, public and private providers of transportation, and other interested parties with an opportunity to comment on the draft TIP. The strategy to provide a public review and input process is described in the MPO's *Public Participation Plan for its Transportation Plans and Programs* and is available on the MPO Website, WausauMPO.org.

The Wausau Metropolitan Planning Organization completed an update to the long range transportation plan in November 2016, which is the guidance for the selection and prioritization of area transportation projects. A list of illustrative projects for potential future funding is included for information purposes in Appendix D.

**WAUSAU MPO AREA
2017 PLANNING BOUNDARY
MARATHON COUNTY WI**



Map Date: 11/17/2017



THE FIXING AMERICA'S SURFACE TRANSPORTATION (FAST) ACT AND THE MOVING AHEAD FOR PROGRESS IN THE 21ST CENTURY (MAP-21) ACT

Federal-aid highway and transit funding programs changed effective December 3, 2015 as a result of the 2015 transportation reauthorization act *Fixing America's Surface Transportation Act*, (FAST).

The following indicates how funding programmed in the TIP relates to the FAST Act revenue programs.

Federal-aid Highway Programs: National Highway Performance Program (NHPP), Surface Transportation Program (STP), Congestion Mitigation & Air Quality Improvement Program (CMAQ), Highway Safety Improvement Program (HSIP), Railway-Highway Grade Crossing, Transportation Alternatives (TAP).

Federal-aid Transit Programs: Urbanized Area Formula Grants (5307), Enhanced Mobility of Senior's and Individuals with Disabilities (5310), Rural Area Formula Grants (5311), State of Good Repair Program (5337) (Formula), Bus and Bus Facilities Formula Program (5339), Fixed Guideway Capital Investment Grants (5309).

Development of Metropolitan Planning based on the FAST Act

In the FAST Act, the metropolitan and statewide transportation planning processes are continued and enhanced to incorporate performance goals, measures, and targets into the process of identifying needed transportation improvements and project selection. Public involvement remains a hallmark of the planning process.

Requirements for a long-range plan and a short-term transportation improvement plan (TIP) continue, with the long-range plan to incorporate performance plans required by the Act for specific programs. The long-range plan must describe the performance measures and targets used in assessing system performance and progress in achieving the performance targets. The TIP must also be developed to make progress toward established performance targets and include a description of the anticipated achievements. In the statewide and nonmetropolitan planning process, selection of projects in nonmetropolitan areas, except projects on the NHS or funded with money remaining from the discontinued Highway Bridge Program, must be made in cooperation with affected nonmetropolitan officials or any regional transportation planning organization.

Program Purpose

The metropolitan planning process establishes a cooperative, continuous, and comprehensive framework for making transportation investment decisions in metropolitan areas. Program oversight is a joint Federal Highway Administration/Federal Transit Administration responsibility.

Statutory and regulatory citation(s): FAST Act §§1105, 1201; 23 USC 104, 134; 23 CFR Part 450

Funding features

The FAST Act's approach to formula program funding is authorizing a lump sum total instead of individual authorizations for each program. Once each State's combined total apportionment is

calculated, an amount is set aside for the State's Metropolitan Planning program via a calculation based on the relative size of the State's FY 2009 Metropolitan Planning apportionment.

From the State's Metropolitan Planning apportionment, a proportionate share of funds for the State's Transportation Alternatives Program is to be set aside.

Federal share: Determined in accordance with 23 USC 120.

Key modifications

Modifications to the metropolitan planning process include the following:

Performance-based planning

- Metropolitan planning organizations (MPOs) will be required to establish and use a performance-based approach to transportation decision making and development of transportation plans.
- Each MPO will establish performance targets that address the FAST Act surface transportation performance measures.
- The performance targets selected by a MPO will be coordinated with the WisDOT identified performance measures/targets to ensure consistency to the maximum extent practicable.
- Performance targets selected by a MPO will be coordinated with public transportation providers, to the maximum extent practicable, to ensure consistency with sections 5326(c) and 5329(d) of title 49.
- MPOs are required to integrate into the metropolitan transportation planning process other performance-based transportation plans or processes.
- The MPOs will establish performance targets not later than 180 days after the date that the relevant State or public transportation provider establishes performance targets.
- In MAP-21, the structure of all MPOs is required to include officials of public agencies that administer or operate public transportation systems.

Long Range Transportation Plan (Plan)

- The Plan will include a description of the performance measures and performance targets used in assessing the performance of the transportation system.
- The Plan will also include a system performance report and subsequent updates evaluating the condition and performance of the transportation system with respect to the established performance targets.
- MPOs have the option of developing multiple scenarios for consideration during the development of the Plan.

Transportation Improvement Program (TIP)

- The TIP will include, to the maximum extent practicable, a description of the anticipated effect of the TIP toward achieving the performance targets established in the Plan, linking investment priorities to those performance targets.

Continuing provisions

Significant continuing provisions include:

- The minimum population required for a MPO remains at more than 50,000; Transportation Management Areas (TMAs) are those areas with a population greater than 200,000.
- The Plan must be prepared and updated every 4 years (or more frequently if the MPO elects to do so) in nonattainment areas and areas that were nonattainment and are now under a maintenance plan. In other areas, the Plan will be prepared and updated on a 5 year cycle (or more frequently if the MPO elects to do so).
- The Plan covers a minimum 20-year planning horizon with air quality conformity and fiscal constraint.
- Public involvement remains a hallmark of the metropolitan planning process.
- The TIP is to be updated at least once every 4 years and approved by the MPO and Governor.
- A congestion management system is required in TMAs and the planning process in TMAs must be certified by the Secretary.

Performance report

The U.S. Secretary of Transportation is required to submit a report to Congress not later than 5 years after the date of enactment of the FAST Act. The report is to evaluate:

- The overall effectiveness of performance-based planning as a tool for guiding transportation investments;
- The effectiveness of the performance-based planning process for each metropolitan planning organization;
- The extent to which MPOs have achieved, or are making substantial progress towards achieving, the performance targets, and whether MPOs are developing meaningful performance targets; and
- The technical capacity of MPOs that operate within a metropolitan planning area of less than 200,000, and their ability to carry out the planning requirements.

POLICY FOR APPROVAL OF TRANSPORTATION IMPROVEMENT PROGRAMS

The following policy is used by the Wausau MPO in developing the Transportation Improvement Program allocation of the STBG funds for the Wausau Metropolitan Area.

1. COST SHARE

The Wausau MPO has established the federal share of STBG projects at fifty percent (50%). The balance of the project costs, fifty percent (50%), is the responsibility of the sponsoring local government.

2. PROJECT ELIGIBILITY

The following are criteria used by the Wausau MPO in determining STBG project eligibility and is consistent with WisDOT STBG eligibility criteria:

- A. The STBG funding which is pooled by the Wausau MPO communities should be primarily utilized for roadways under county, city, village, or town jurisdiction.
- B. STBG funds will only be programmed within the Wausau adjusted urbanized area boundary approved by the Wausau MPO and state DOT.
- C. The sponsoring local government is required to present a letter of agreement indicating financial commitment to the STBG funded project.
- D. Transit capital and bikeway projects in conformance with the FAST Act requirements are eligible for STBG funding.
- E. The costs of feasibility studies are not eligible for STBG funding.
- F. Projects with total construction costs of less than \$100,000 are not eligible for STBG funding.
- G. Relocation costs are not eligible for STBG funding.
- H. Isolated traffic signal installation projects are not eligible for STBG funding.
- I. The cost of preliminary design is not eligible for STBG funding.
- J. Right-of-way acquisition costs are not eligible for STBG funding.
- K. Sidewalk projects are not eligible for STBG funding unless the project is in conjunction with an STBG funded project.
- L. Railroad crossing projects are not eligible for STBG funding unless the railroad crossing project is in conjunction with an STBG funded project.

3. PRIORITIZATION CRITERIA FOR TRANSPORTATION FACILITIES

The recommended Transportation Improvement Program within the *Long Range Transportation Plan for the Wausau Metropolitan Area* and the prioritization criteria within

this section assist the Marathon County Metropolitan Planning Commission in selecting projects for STBG funding. Project prioritization will be guided by the *Long Range Transportation Plan for the Wausau Metropolitan Area*. Projects eligible for STBG funding will be prioritized every two years in relation to the three year STBG funding allocation. With the communities submitting projects to the MPO, the following criteria and points system are applied to the projects by the MPO staff. Staff takes recommendations to the MPO Technical Advisory Committee who submits projects ranked by the criteria to the Marathon County Metropolitan Planning Commission for final approval. In 2013, the Technical Advisory Committee reviewed and consolidated the 16 criteria for reviewing projects for STBG funding to the following 8 criteria:

1. Key Component of Transportation System:

This criterion gives merit to projects according to their overall relationship with the rest of the transportation system as outlined in local and regional adopted comprehensive and land use plans.

6 Points: The roadway, transit, bicycle or pedestrian project would have a high, positive impact on the overall transportation system. Examples: projects that occur on principal arterials; transit projects that enhance system-wide transit service, bicycle/pedestrian projects that are included in adopted bike/pedestrian plans or occur along identified bicycle routes, or provide a critical link in the transportation system.

4 Points: The roadway, transit, bicycle or pedestrian project would have a moderately positive impact on the overall transportation system. Example: projects that occur on minor arterials.

2 Points: The roadway, transit, bicycle or pedestrian project would have a low, positive impact on the overall transportation system.

0 Points: The roadway, transit, bicycle or pedestrian project would have little or no positive impact on the overall transportation system.

2. Preserves Existing System:

This criterion rewards those projects that strive to preserve the existing transportation infrastructure.

6 Points: The roadway, transit, bicycle or pedestrian project preserves the existing system, and includes replacement and/or rehabilitation along a transportation corridor. Examples: roadway projects that enhance travel along major transportation corridors or address pavement conditions; transit projects that enhance service along existing routes or enhance the overall system; bicycle/pedestrian projects that enhance the existing bicycle or pedestrian system, including replacement and rehabilitation of existing facilities.

4 Points: The roadway, transit, bicycle or pedestrian project preserves the existing system, but may include some new construction to provide connections and continuity along a major corridor.

- 2 Points: The roadway, transit, bicycle or pedestrian project preserves some of the existing system, but is dominated by significant changes in alignments, routes, and facilities along a minor corridor.
- 0 Points: The roadway, transit, bicycle or pedestrian project does not strive to preserve the existing system.
3. Cost Effectiveness:
This criterion reflects the results of a candidate project compared to the costs of the project (i.e. number of bus riders attracted per day). Using an estimated cost of the project, and number of users, a measure of the project's cost-per-user may be calculated to provide a point of comparison among the projects.
- 6 Points: The roadway, transit, bicycle or pedestrian project is highly cost effective.
- 4 Points: The roadway, transit, bicycle or pedestrian project is moderately cost effective.
- 2 Points: The roadway, transit, bicycle or pedestrian project is not very cost effective.
- 0 Points: The roadway, transit, bicycle or pedestrian project is not cost effective.
4. Promotes Efficient System Management and Operation:
This criterion rewards those projects that promote an increase in density (population and/or employment), serve areas of mixed land uses, and reduce auto dependency.
- 6 Points: The roadway, transit, bicycle, or pedestrian project meets all three criteria (density, mixed use, and auto dependency).
- 4 Points: The roadway, transit, bicycle, or pedestrian project meets two of the criteria.
- 2 points: The roadway, transit, bicycle, or pedestrian project meets only one criterion.
- 0 Points: The roadway, transit, bicycle, or pedestrian project meets none of the criteria.
5. Project Coordination:
This criterion gives weight to projects that can be coordinated with other projects in the area.
- 6 Points: Coordination of the roadway, transit, bicycle, or pedestrian project with another planned or programmed project would result in significant cost and time savings.
- 4 Points: Coordination of the roadway, transit, bicycle, or pedestrian project with another planned or programmed project would result in moderate cost and time savings.
- 2 Points: Coordination of the roadway, transit, bicycle, or pedestrian project with another planned or programmed project would result in minimal cost and time savings.

0 Points: Coordination of the roadway, transit, bicycle, or pedestrian project with another planned or programmed project would result in no cost or time savings.

6. Safety:

This criterion is based on an assessment of existing safety and security problems and the extent to which the proposed project will reduce such problems. Crash statistics and standards should be used when considering roadway and bicycle/pedestrian projects, while safety and security aspects of passengers should be considered for transit projects. Some Intelligent Transportation Systems (ITS) measures may be used for this criterion.

6 Points: The roadway, transit, bicycle, or pedestrian project would have a high, positive impact on safety and security (i.e. reduction in crashes).

4 Points: The roadway, transit, bicycle, or pedestrian project would have a moderate, positive impact on safety and security.

2 Points: The roadway, transit, bicycle, or pedestrian project would have a low positive impact on safety and security.

0 Points: The roadway, transit, bicycle, or pedestrian project would have no impact on safety and security.

7. Congestion Relief:

This criterion is based on an assessment of existing congestion problems and the impact a proposed project may have in reducing such problems. Existing congestion can be evaluated across all modes by looking at the volume of traffic or the number of people affected by the congestion. This criterion will also look at differing levels of ITS measures for congestion relief.

6 Points: The roadway, transit, bicycle, or pedestrian project would have a high, positive impact on reducing congestion. Examples: roadway projects that may include new arterial roadways, traffic operations systems/ITS improvements; transit projects that increase service capacity, increase service reliability, decrease vehicle crowding, or reduce travel time; bicycle/pedestrian projects that provide bicycle path/lanes, or sidewalks to serve commuters, new sidewalks along principal arterials, or connections between communities.

4 Points: The roadway, transit, bicycle, or pedestrian project would have a moderate, positive impact on reducing congestion. Examples: roadway projects that may include minor arterial roadways that would provide auxiliary lanes, left-turn bays, or park-and-ride lots; transit projects that increase service capacity and reliability, but to a lesser extent than other projects may; bicycle/pedestrian projects that would fill in sidewalk gaps between origins and destinations or provide a bicycle path/lanes with mixed commuter or other non-recreational use.

2 Points: The roadway, transit, bicycle, or pedestrian project would have a low, positive impact on reducing congestion. Examples: roadway projects that would

provide minor traffic signalization enhancement; transit projects that may increase passenger comfort or convenience (i.e. bike racks); bicycle/pedestrian projects that would provide signage or a bicycle path/lane or sidewalk that is primarily for recreational travel or not on the system.

0 Points: The roadway, transit, bicycle, or pedestrian project would have little to no positive impact on reducing congestion.

8. Multimodalism:

This criterion rewards projects that accommodate more than one mode of travel.

6 Points: The roadway, transit, bicycle, or pedestrian project accommodates more than three modes of travel.

4 Points: The roadway, transit, bicycle, or pedestrian project accommodates only three modes of travel.

2 points: The roadway, transit, bicycle, or pedestrian project accommodates only two modes of travel.

0 Points: The roadway, transit, bicycle, or pedestrian project accommodates only one mode of travel.

4. TIP APPROVAL AND AMENDMENTS

Please refer to Appendix A for the resolution by the Marathon County Metropolitan Planning Commission adopting the *2018-2021 Transportation Improvement Program for the Wausau Metropolitan Area*. The Marathon County Metropolitan Planning Commission approved this TIP at their November 14, 2017 meeting.

The FAST Act will continue to provide flexibility as to which year the projects are shown in the TIP. Federal regulations allow for WisDOT and the Wausau MPO to establish expedited procedures regarding the advancement of projects from the second, third or fourth year of the improvement schedule. The FAST Act will also provide flexibility in the federal funding program that may ultimately be used to fund the project. Each year the TIP must be fiscally constrained. There are a number of different funding programs that can be utilized for transportation improvements, and the range of projects that could be covered under any one program has been expanded. While there is flexibility among programs, it must be demonstrated that the transportation project provides a benefit within the final funding program.

WisDOT has provided the Metropolitan Planning Organizations guidance on how to resolve these dynamic funding issues. To preclude the need for frequent amendments to the TIP, and to clarify the local planning procedures:

TIP PUBLIC PARTICIPATION PROCEDURES

- The MPO staff will prepare project information including project name and location, project description, lead agency, estimated cost and funding sources.
- MPO staff will prepare a draft TIP for public review.

- The public comment period on the draft TIP will last for a minimum of 30 days and be provided to the websites, mailing lists and interested parties as described in the Public Participation Plan.
- MPO staff will host at least one formal public meeting to solicit comments and to evaluate the projects proposed for inclusion in the final document. The public meeting will occur toward the end of the public comment period.
- The MPO will utilize the comments obtained during the public comment period to finalize the TIP.
- The MPO will adopt the final TIP and make the document available for public use based on the MPO's Public Participation Plan.

TIP AMENDMENT PROCEDURES

No Amendment is required if:

- Changes to the implementation schedule for projects are within the first four years of the approved TIP.
- Changes in the scope or character of work or project limits remain reasonably consistent with the approved project.
- Changes to the funding sources, categories or amount for a project without changing the scope of work or schedule within the first four years of the TIP.

Minor Amendment is needed if:

- There is an addition of a preservation project to the first four years of the TIP, including advancing a project for implementation from the out-years of the TIP.
- Moving a preservation project out of the first four years of the TIP.
- Changing the scope of a preservation project within the first four years of the TIP such that the current description is no longer reasonably accurate.
- Changes in a project funding that impacts the funding for other projects within the first four years of the TIP forcing any preservation project out of the four-year window.

The Amendment process goes through the MPO committee structure and the WisDOT and FHWA if:

A Major Amendment is need:

- An addition of an expansion project into the first four years of the TIP, including advancing a project for implementation from the out-years of the TIP.
- Moving an expansion project out of the first four years of the TIP.
- Significantly changing the scope of an expansion project within the first four years of the TIP such that the current description is no longer reasonably accurate.
- The addition or deletion of any project that exceeds the lesser of:
 - 10 % of the federal funding programmed for the calendar year or \$1,000,000.

The Amendment process goes through a public involvement opportunity then through the MPO committee structure and the WisDOT and FHWA. These procedures were taken from the MPO's *Public Participation Plan*.

5. PROJECT COST MONITORING

The costs of TIP projects involving MPO funds will be monitored by the MPO on an ongoing and regular basis from the time of initial identification until the time of let. Sponsoring

jurisdictions are responsible for notifying the MPO of significant changes in estimated project cost and/or scope. Changes are significant when:

- Cost increase is greater than \$30,000 for projects with an initial cost estimate of \$200,000 or less.
- Cost increase is greater than 15% for projects with an initial cost estimate over \$200,000.

Re-approval by the MPO is required for all TIP projects incurring a significant change in estimated cost, whether the change is due to estimate revisions or a change in scope. At the time of reconsideration, the Marathon County Metropolitan Planning Commission action may include a change in project priority, deletion of the project from the program, requiring the sponsoring entity to cover the cost increase, funding up to 50 percent of the cost increase with STBG funds, delaying the project until additional STBG funds are available, or other actions deemed appropriate by the Marathon County Metropolitan Planning Commission. Some actions may require formal amendment of the TIP document.

6. EXPEDITED PROJECT SELECTION PROCEDURES

The Wausau MPO, WisDOT and the area transit system, Metro Ride, hereby agree to the following procedures in advancing projects from the approved TIP for federal funding commitment:

1. The first year of the TIP constitutes an agreed-to list of projects for project selection purposes and no further project selection action is required by the MPO for WisDOT or the transit operator(s) to proceed with federal funding commitment.
2. Projects from the second, third or fourth year of the TIP can be advanced by WisDOT or the transit operator(s) for federal fund commitment without further project selection action by the MPO.
3. Concerning the federal funding sources identified for individual project in the TIP, it is agreed that WisDOT may unilaterally interchange eligible FHWA funding program sources without necessitating an amendment, subject to the project selection authority federal regulations and state local program procedures reserve for the State and MPO, and subject to reconciliation under item 5.
4. WisDOT can unilaterally interchange FTA section 5309 and section 5307 capital funds in urbanized areas between 50,000 and 200,000 in population without necessitating a TIP amendment, FTA should be notified of any interchange of funds.
5. To maintain accountability and fiscal constraint as changes occur during implementation of the TIP, the MPO, WisDOT and the transit operator(s) will monitor projects in the TIP and account for all significant changes in scheduled years and costs in a TIP amendment at the midpoint of the calendar year.

2018 – 2021 TRANSPORTATION IMPROVEMENT PROGRAM

Table 1 is a list of the 2018-2021 federal and state funded projects within the Wausau Metropolitan Area and reflects projects programmed based on the FAST Act funding programs. Projects within Table 1 have been grouped by mode: Transit and Highway projects. Map 2 identifies the locations of the projects listed in Table 1. Project numbers located to the left of the project jurisdiction in Table 1 correspond to the numbering system used on the maps.

Table 1 uses the following codes to identify funding sources:

Federal Transit:

FTA Section 5307	5307
FTA Section 5309	5309
FTA Section 5310	5310

State Transit:

Wisconsin Statute 85.20	85.20
Wisconsin Statute 85.21	85.21

New Federal Programs based on FAST Act:

NHPP –
National Highway Performance Program

STBG –
Surface Transportation Block Grant
Sub Categories for urban, flex,
bridge and TA

HSIP –
Highway Safety Implementation Program

HSIP-RR –
Rail-Highway Grade Crossing Set-aside

Prior Funding Programs:

IM, NHS, BR (on the NHS)

STP, BR (not on the NHS), TAP,
TE, SRTS

HSIP

HSIP-RR

Projects involving facility expansion are identified by an "E" in the comment column, while projects involving facility preservation are identified by a "P." The total cost for each category is summarized at the bottom of the project listing. The WisDOT ID number is also included in the comment column.

The following statements are provided to allow the flexible use of Federal funding programs and clarify planning procedures:

- The MPO and WisDOT agree that the first year of the TIP constitutes an agreed to list of projects for project selection purposes and that no further project selection action is required for WisDOT or the transit operator to proceed with federal fund commitment.
- If WisDOT or the transit operator(s) wish to proceed with a project(s) that is not in the first year of the TIP, the MPO agrees that projects for the second, third, or fourth year of the TIP can be advanced to proceed with federal fund commitment without further action by the MPO.

- Even though a new TIP has been developed and approved by the MPO, WisDOT can continue seek federal fund commitment for projects in the previous TIP until FHWA and FTA have jointly approved a new STIP.
- Highway and transit projects reflected in any of the four years of the approved TIP may be advanced for federal fund commitment without requiring any amendment to the TIP.
- It is the intent of WisDOT and the MPO to advance only projects, including transit operating assistance, that are included in an approved TIP and STIP.
- Concerning the federal sources the MPO has identified for individual projects in its TIP, it is agreed that WisDOT can unilaterally interchange the various FHWA funding program sources without necessitating a STIP or TIP amendment, except that WisDOT must seek MPO staff approval to use Entitlement of Allocated STP funds and Congestion Mitigation and Air Quality (CMAQ) funds for projects not identified for that source of funding in the TIP.
- WisDOT can also unilaterally interchange FTA Section 5309 and Section 5307 capital funds in urbanized areas between 50,000 and 200,000 in population without necessitating a STIP or TIP amendment.

The projects that will utilize the 2017-2022 STBG allocation were prioritized at the Marathon County Metropolitan Planning Commission meeting in October 2017 and are included in this TIP. The projects that will utilize the 2015-2020 STP/Urban allocation were prioritized at the Marathon County Metropolitan Planning Commission meeting in June 2015 and are also included in this TIP. Projects sponsored by WisDOT in Table 1 are included in the WisDOT North Central Region *Six Year Highway Improvement Program*. These projects are programmed utilizing funds identified in Table 1 on the next page.

Tables 1 and 2 may need minor revisions based on WisDOT finalizing the STBG funding with the old STP/Urban and STP/Transportation Alternatives programs, final program year determinations, funding source and cost share clarifications, and review comments received from WisDOT and FHWA.

Projects utilizing FTA - Section 5309 and Section 5307 funds in Table 1 were submitted by the Wausau Area Transit System, d/b/a Metro Ride. Final project selection is contingent upon available federal, state, and local funds. Projects utilizing Section 5310 and State 85.20 and 85.21 funds in Table 1 were submitted by the Wausau Area Transit System and North Central Health Care. Final funding levels are dependent upon funding approvals by WisDOT.

Table 2 illustrates the programmed expenditures within the TIP (Table 1) and the estimated available funding for the Wausau Metropolitan Area. The expenditures and available funding are itemized by funding source.

Table 3 identifies the status of projects that were programmed in the *2017-2020 Transportation Improvement Program for the Wausau Metropolitan Area*.

2018-2021 TABLE 1

TIP PROJECT LISTING (\$)

PRIMARY JURISDICTION/ PROJECT	PROJECT	TYPE OF	2018				2019				2020				2021				Federal and State Funding Program Number
			FED	STATE	LOCAL	TOTAL	FED	STATE	LOCAL	TOTAL	FED	STATE	LOCAL	TOTAL	FED	STATE	LOCAL	TOTAL	

TRANSIT

A	City of Wausau - Metro Ride	Operating Assistance 373-18-001	PE ROW CONST TOTAL	\$818,702	\$1,130,976	\$1,489,057	\$3,438,735	\$1,089,308	\$927,508	\$1,525,082	\$3,541,898	\$1,122,093	\$955,073	\$1,570,989	\$3,648,155	\$1,156,021	\$983,071	\$1,618,507	\$3,757,599	5307 85.20 85.21
B	City of Wausau - Metro Ride	Engine Rebuild 373-018-002	PE ROW CONST TOTAL					38,400		9,600	48,000									5309
C	City of Wausau - Metro Ride	Roof Rehabilitation Bus Garage 373-14-003	PE ROW CONST TOTAL	136,000		34,000	170,000													5309
D	City of Wausau - Metro Ride	Floor Scrubber Replacement 373-14-004	PE ROW CONST TOTAL					36,800		9,200	46,000									5309
E	City of Wausau - Metro Ride	Supervisor Van Replacement 373-14-005	PE ROW CONST TOTAL																	5309
F	City of Wausau - Metro Ride	Transit Buses (7) seven 373-18-003	PE ROW CONST TOTAL		3,027,769		3,027,769													5309
G	City of Wausau - Metro Ride	Revenue Collection System (Fareboxes) 373-15-002	PE ROW CONST TOTAL									446,566		111,642	558,208					5309
H	City of Wausau - Metro Ride	Transmission Rebuild 373-15-003	PE ROW CONST TOTAL	20,800		5,200	26,000													5309
I	North Central Health Care	Specialized Transportation - 373-18-004	PE ROW CONST TOTAL	101,488	69,865		171,353	102,433	70,390		172,823	103,355	70,917		174,272	103,355	70,917		174,272	5307
J	Marathon County CPZ	Specialized Transportation - 373-18-005	PE ROW CONST TOTAL		31,573	6,315	37,888		32,204	6,441	38,646		32,204	6,441	38,646		32,849	6,570	39,419	85.21
K	North Central Health Care	Specialized Transportation - 373-18-006	PE ROW CONST TOTAL		204,052	40,810	244,862		210,174	42,034	252,208		210,174	42,034	252,208		216,479	43,295	259,774	85.21
Transit Totals				1,076,990	4,464,235	1,575,382	7,116,607	1,266,941	1,240,276	1,592,358	4,099,575	1,672,014	1,268,368	1,731,107	4,671,489	1,259,376	1,303,315	1,668,372	4,231,064	

Year of Expenditure Dollars with a 1.8% annual increase	1,076,990	4,464,235	1,575,382	7,116,607	1,289,746	1,262,601	1,621,020	4,173,367	1,732,207	1,314,029	1,793,426	4,839,662	1,327,382	1,373,694	1,758,465	4,459,541
---------------------------------------------------------	-----------	-----------	-----------	-----------	-----------	-----------	-----------	-----------	-----------	-----------	-----------	-----------	-----------	-----------	-----------	-----------

2018 - 2021 TABLE 1
TIP PROJECT LISTING (\$)

PRIMARY JURISDICTION/ PROJECT LOCATION	PROJECT DESCRIPTION	TYPE OF COST	2018				2019				2020				2021				COMMENTS FOS# & Let Date P=preservation E=expansion
			FED	STATE	LOCAL	TOTAL	FED	STATE	LOCAL	TOTAL	FED	STATE	LOCAL	TOTAL	FED	STATE	LOCAL	TOTAL	
			HIGHWAY																
1	State of Wisconsin	Statewide Utilities Group Projects 373-18-007	PE ROW CONST TOTAL		100,000		100,000		100,000		100,000		100,000		100,000		100,000	P	
2	State of Wisconsin	OCR Rail-Highway Crossing Safety Group Projects 373-18-008	PE ROW CONST TOTAL		100,000		100,000		100,000		100,000		100,000		100,000		100,000	P	
3	State of Wisconsin	Region Wide Right-of-Way Level of Effort 373-18-009	PE ROW CONST TOTAL		150,000		150,000		150,000		150,000		150,000		150,000		150,000	P	
4	State of Wisconsin	Region Wide Maintenance Group Projects 373-18-010	PE ROW CONST TOTAL		350,000		350,000		350,000		350,000		350,000		350,000		350,000	P	
5	State of Wisconsin	WisDOT Rail-Highway Crossing Safety Group Projects 373-18-011	PE ROW CONST TOTAL	180,000	20,000	20,000	220,000	180,000	20,000	20,000	220,000	180,000	20,000	20,000	220,000	180,000	20,000	20,000	P
6	State of Wisconsin	Region Preliminary Engineering Group Projects 373-18-012	PE ROW CONST TOTAL		250,000		250,000		250,000		250,000		250,000		250,000		250,000	P	
7	State of Wisconsin	Recondition Bus 51 Wausau, Grand Ave Broadway Ave, Townline Rd & Thomas S C. of Wausau 373-10-024	PE ROW CONST TOTAL	225,000		75,000	300,000		100,700		100,700							6999-02-79 LET : 3/8/22 P	
8	State of Wisconsin	Resurface STH 153 C. Mosinee, Western, 4th & Main Rangeline Rd - Pine St 373-11-019	PE ROW CONST TOTAL		12,000		12,000					1,066,240	266,560	156,000	1,488,800			6370-01-75 LET : 12/10/19 P	
9	State of Wisconsin	Redeck Wisconsin River Bridge CTH WW V. of Brokaw 373-14-019	PE ROW CONST TOTAL					1,821,600	455,400		2,277,000							9474-01-70 LET : 12/11/18 P	
10	State of Wisconsin	Resurface STH 153 C Mosinee, Western Avenue Pine Street to Wisconsin River Bridge 373-11-016	PE ROW CONST TOTAL		12,000		12,000					265,072	66,268	13,660	345,000			6370-01-73 LET : 12/10/19 P	
11	State of Wisconsin	Roadway Maintenance STH 153 Mosinee - Elderon Old 51 Road to East View Drive 373-17-018	PE ROW CONST TOTAL									\$928,800	\$232,200		\$1,161,000			6600-00-61 LET : 5/12/20 P	
12	State of Wisconsin	OCR Rail/Highway Safety Program Railroad Crossing Improvement Northern Road, City of Schofield Crossing Signals/Gates 373-16-016	PE ROW CONST TOTAL	132,960	71,593		204,553	132,960	71,593		204,553							1009-94-55 LET : 6/25/18 P	
13	State of Wisconsin	Install a Skid-Resistant Surface, STH 29, WB STH 29 Ramp NB USH 51 373-16-017	PE ROW CONST TOTAL									779,172	86,575		865,747			1053-02-80 LET : 4/14/20 P	
14	State of Wisconsin	Bridge Rehabilitation Grand Ave. Wis Central LTD Bridge (B-37-0100) C. of Wausau 373-17-024	PE ROW CONST TOTAL												378,480	94,620	267,900	741,000	378,480 (NHPP)

2018 - 2021 TABLE 1
TIP PROJECT LISTING (\$)

PRIMARY JURISDICTION/ PROJECT LOCATION	PROJECT DESCRIPTION	TYPE OF COST	2018				2019				2020				2021				COMMENTS FOS# & Let Date P=preservation E=expansion
			FED	STATE	LOCAL	TOTAL	FED	STATE	LOCAL	TOTAL	FED	STATE	LOCAL	TOTAL	FED	STATE	LOCAL	TOTAL	
			15	State of Wisconsin C. of Wausau	Bridge Rehabilitation Scott Street Wisconsin River Bridge (B-37-203) 373-17-023	PE ROW CONST TOTAL		\$88,875	\$29,625	\$118,500									
16	State of Wisconsin Rib Mountain	Bridge Rehabilitation USH 51/STH 29 Interchange Structures 373-17-022	PE ROW CONST TOTAL		\$1,042,577	\$260,644	\$1,303,221												ID# 1009-45-36/66 Let: 11/14/17 P
17	State of Wisconsin Mosinee	Surface Treatment I-39 Bull Jr Creek Bridge 373-17-021	PE ROW CONST TOTAL							\$66,425	\$7,380		\$73,805						ID# 1160-01-07/77 Let: 8/13/19 P
18	State of Wisconsin Mosinee	Roadway Maintenance STH 153 I39 Ramp to I39 Ramp 373-17-020	PE ROW CONST TOTAL							\$111,360	\$27,840		\$139,200						ID# 6600-00-62 Let: 5/12/20 P
19	State of Wisconsin Wausau	Bridge Rehabilitation Structure Painting Thomas Street WI River Bridge	PE ROW CONST TOTAL		\$94,500		\$94,500												6999-03-34/64 P Construction Year: 2024 Advanceable Year: 2019
20	State of Wisconsin Mosinee	Resurfacing STH 153 STH 107 to Rangeline Road	PE ROW CONST TOTAL		\$180,000		\$180,000												6370-00-02/72 P Construction Year: 2025 Advanceable Year: 2021
21	State of Wisconsin Mosinee	Bridge Rehabilitation Regionwide Bridge Project Polymer Overlay STH 153 WI River Bridges	PE ROW CONST TOTAL		\$220,000		\$220,000												1009-47-31/61 P Construction Year: 2025 Advanceable Year: 2019
22	City of Wausau	Reconstruction/Realign Bridge Street Westwood Dr. - 28th Ave	PE ROW CONST TOTAL																E
23	City of Wausau	Reconstruction Pine Ridge Blvd Bridge St. - Plaza Dr.	PE ROW CONST TOTAL																P
24	City of Wausau	Reconstruction 1st Avenue Thomas St. to Stewart Ave 373-14-023	PE ROW CONST TOTAL							738,998		864,802	1,603,800						6999-18-73 Let: 12/11/18, 6999-18-53 Let: 10/25/18 P
25	City of Wausau	Reconstruction Townline Road Grand Ave. to Northwestern Ave. 373-14-022	PE ROW CONST TOTAL							636,002		823,948	1,459,950						6999-18-03.53.73 Let: 3/12/19, 6999-18-51/71 Let: 2/25/19 P
26	City of Wausau	Intersection Improvement 72nd Ave. and Stewart Ave. 373-06-060	PE ROW CONST TOTAL			200,000	200,000												P
27	City of Wausau	Resurface N. 6th Street Riverview Court to Evergreen Road	PE ROW CONST TOTAL																P
28	City of Wausau	Reconstruction Thomas St. 4th Ave. to WI River Bridge	PE ROW CONST TOTAL																E
29	City of Wausau	Reconstruction Clark Street. 1st Ave to 3rd Ave	PE ROW CONST TOTAL																P
		Reconstruction	PE																585,000 585,000

2018 - 2021 TABLE 1
TIP PROJECT LISTING (\$)

PRIMARY JURISDICTION/ PROJECT LOCATION	PROJECT DESCRIPTION	TYPE OF COST	2018				2019				2020				2021				COMMENTS FOS# & Let Date P=preservation E=expansion			
			FED	STATE	LOCAL	TOTAL	FED	STATE	LOCAL	TOTAL	FED	STATE	LOCAL	TOTAL	FED	STATE	LOCAL	TOTAL				
			30	City of Wausau Stewart Avenue 48th Ave to 72nd Ave 373-17-013	ROW CONST TOTAL																	3,900,000 4,485,000
31	City of Wausau Reconstruction 2nd Street Bridge St. to E Wausau Avenue 373-17-014	PE ROW CONST TOTAL			335,775 335,775	335,775 335,775														P		
32	City of Wausau Reconstruction 72nd Avenue Stewart Avenue to Packer Drive 373-17-015	PE ROW CONST TOTAL							1,500,000 1,500,000	1,500,000 1,500,000										P		
33	City of Wausau Construction Stettin Drive Multi-Use Path Lazy Acres Rd. to 44th Ave 373-18-013	PE ROW CONST TOTAL									570,000 570,000	570,000 570,000								E		
34	Town of Rib Mountain Reconstruction Lilac Avenue Rib Mountain Dr. to Phlox Ln 373-17-016	PE ROW CONST TOTAL											130,000 72,000 1,014,000 1,216,000	130,000 72,000 1,014,000 1,216,000						P		
35	Town of Rib Mountain Trillium Lane Trail Trillium Lane to Foxglove Road 373-17-017	PE ROW CONST TOTAL											492,800 492,800 (STBG)			123,200 123,200	616,000 616,000			6675-02-00/70 LET: 1/25/20 E		
36	Marathon County Reconstruction of County Highway K USH 51 to County Line 373-18-014	PE ROW CONST TOTAL			58,200 58,200	58,200 58,200								3,001,265 3,001,265 (HSIP/STBG)			142,500 142,500	3,143,765 3,143,765		9491-06-00/70 LET: 2/11/20 P		
37	Marathon County Reconstruction of County Highway N (Townline Rd.) Skyline Dr. to CTH X 373-14-025	PE ROW CONST TOTAL							485,337 485,337 (STBG)		382,887 382,887	868,224 868,224								6999-18-75 Let: 3/12/19 P 6999-18-05/75		
38	Village of Weston Reconstruction Ross Avenue River Bend Road to Kraemer Lane	PE ROW CONST TOTAL			40,000 40,000	40,000 40,000					65,000 850,000 915,000	65,000 850,000 915,000								P		
39	Village of Weston Construction Northwestern Ave Extention to Sandy Meadow Neighborhood	PE ROW CONST TOTAL															200,000 100,000 300,000	200,000 100,000 300,000		250,000 5,000,000 5,250,000	250,000 5,000,000 5,250,000	E
40	Village of Weston Construction of streets within SE Quadrant of STH 29 and Camp Phillips Rd north of Weston Ave	PE ROW CONST TOTAL			150,000 2,000,000 2,150,000	150,000 2,000,000 2,150,000					300,000 4,780,000 5,080,000	300,000 4,780,000 5,080,000					250,000 5,000,000 5,250,000	250,000 5,000,000 5,250,000		E		

2018 - 2021 TABLE 1
TIP PROJECT LISTING (\$)

PRIMARY JURISDICTION/ PROJECT LOCATION	PROJECT DESCRIPTION	TYPE OF COST	2018				2019				2020				2021				COMMENTS FOS# & Let Date P=preservation E=expansion			
			FED	STATE	LOCAL	TOTAL	FED	STATE	LOCAL	TOTAL	FED	STATE	LOCAL	TOTAL	FED	STATE	LOCAL	TOTAL				
			41	Village of Weston Reconstruction Weston Ave. Camp Phillips Rd. to Von Kanel	PE ROW CONST TOTAL			200,000	200,000			250,000 100,000 3,220,000 3,570,000	250,000 100,000 3,220,000 3,570,000									
42	Village of Weston Reconstruction Weston Ave. Von Kanel to Ryan Rd.	PE ROW CONST TOTAL										125,000 100,000 225,000	125,000 100,000 225,000			200,000 4,500,000 4,700,000	200,000 4,500,000 4,700,000					P
43	Village of Weston Ryan Street Commerce Drive to Weston Ave.	ROW CONST TOTAL										180,000 180,000	180,000 180,000			105,000 1,055,000	105,000 1,055,000					P
44	Village of Weston Reconstruction Weston Ave. Birch St. to Alderson St. 373-04-015	PE ROW CONST TOTAL										100,000 100,000 100,000	100,000 100,000 100,000			100,000 1,892,000 2,092,000	100,000 1,892,000 2,092,000					E
45	Village of Weston Reconstruction Fuller Street Ross Ave. to Schofield Ave.	PE ROW CONST TOTAL										125,000 125,000	125,000 125,000			120,000 1,325,000 1,445,000	120,000 1,325,000 1,445,000					P
46	Village of Weston Reconstruction of Jelinek Avenue Alderson St. to Coronado St.	PE ROW CONST TOTAL														180,000 180,000	180,000 180,000					P
47	Village of Weston Reconstruction Birch St. Weston Ave. to Shorey Ave	PE ROW CONST TOTAL			75,000	75,000			150,000 1,250,500 1,400,500	150,000 1,250,500 1,400,500												P
48	Village of Weston Reconstruction Weston Ave. Ryan Street to CTH J	PE ROW CONST TOTAL										175,000 100,000 275,000	175,000 100,000 275,000			200,000 6,500,000 6,700,000	200,000 6,500,000 6,700,000					P
49	Village of Weston Construction of Bicycle Lanes on Alderson (Weston to Howland), Howland (Alderson to CTH X), and Shorey (Alderson to CTH X)	PE ROW CONST TOTAL							50,000 25,000 75,000	50,000 25,000 75,000			250,000 3,750,000 4,000,000	250,000 3,750,000 4,000,000								E
50	Village of Weston Reconstruction Camp Phillips Road STH 29 to Weston Ave	PE ROW CONST TOTAL							200,000 100,000 300,000	200,000 100,000 300,000			175,000 3,000,000 3,175,000	175,000 3,000,000 3,175,000								P
51	Village of Weston Reconstruction Schofield Ave Camp Phillips Road Intersection	PE ROW CONST TOTAL							75,000 50,000 125,000	75,000 50,000 125,000			75,000 750,000 825,000	75,000 750,000 825,000								P
52	Village of Weston Reconstruction Ross Avenue and Camp Phillips Road Intersection	PE ROW CONST TOTAL							50,000 150,000 200,000	50,000 150,000 200,000			50,000 400,000 450,000	50,000 400,000 450,000								P
53	Village of Weston Reconstruction Jelinek Avenue and Camp Phillips Road Intersection	PE ROW CONST TOTAL							75,000 50,000 125,000	75,000 50,000 125,000			75,000 500,000 575,000	75,000 500,000 575,000								P
54	Village of Weston Construction of a new road and Bridge over STH 29 at Municipal Street Extended South	PE ROW CONST TOTAL										200,000 100,000 300,000	200,000 100,000 300,000									P

2018 - 2021 TABLE 1
TIP PROJECT LISTING (\$)

PRIMARY JURISDICTION/ PROJECT LOCATION	PROJECT DESCRIPTION	TYPE OF COST	2018				2019				2020				2021				COMMENTS FOS# & Let Date P=preservation E=expansion		
			FED	STATE	LOCAL	TOTAL	FED	STATE	LOCAL	TOTAL	FED	STATE	LOCAL	TOTAL	FED	STATE	LOCAL	TOTAL			
55	Village of Weston	Construct a Road Connection Between Transport Way and Weston Ave			50,000	50,000			100,000	100,000										P	
									50,000	50,000											
					50,000	50,000			1,050,000	1,050,000											
									1,200,000	1,200,000											
56	Village of Rothschild	Construction of Military Ave Pflieger Street to Bus Hwy 51							179,054	179,054											E
									1,981,670	1,981,670											
									2,160,724	2,160,724											
57	Village of Rothschild	Construction of Margaret Street Military Ave. to Shorey Ave											142,732	142,732							P
													1,119,352	1,119,352							
													1,262,084	1,262,084							
58	Village of Rothschild	Reconstruction Becker Street US Bus 51 to Kamke Street			78918	78918															P
					608230	608230															
					687148	687148															
59	Village of Rothschild	Construction of Katherine Street Leroy Avenue to Becher Street			104,089	104,089															P
					714,363	714,363															
					818,452	818,452															
60	Village of Rothschild	Construction of Johnson Street Leroy Avenue to Florence Street			40,720	40,720															P
					279,581	279,581															
					320,301	320,301															
61	City of Schofield	Reconstruction of Grossman Ave the Water Tower to Northern Road			519,750	519,750															P
					519,750	519,750															
62	City of Schofield	Reconstruction of Grossman Ave Mason Street to the Water Tower			761,400	761,400															P
					761,400	761,400															
63	City of Schofield	Reconstruction of Alderson Ave. from Grossman Ave to Mallard Lane							842,725	842,725											P
									842,725	842,725											
64	Village of Kronenwetter	Resurface Old Hwy 51 Happy Hollow Road to Kowalski Road							110,000	110,000											P
													900,000	900,000							
									110,000	110,000				900,000	900,000						
65	Village of Kronenwetter	Construction of Old Hwy 51 Multi Use Path 373-12-019			412,764	103,191	515,955														E
					412,764	103,191	515,955														6999-11-07/77
66	Village of Kronenwetter	Resurface Old Hwy 51 Village Road to Nelson Road			20,000	20,000															P
					20,000	20,000															
									739,200	739,200											
									739,200	739,200											
Totals			\$1,580,537	\$1,909,612	#REF!	#REF!	\$3,861,937	\$1,526,100	\$21,004,786	\$26,392,823	\$6,891,134	\$1,656,823	\$25,113,444	\$33,661,401	\$1,363,480	\$1,265,870	\$27,294,900	\$29,924,250			
Year of Expenditure Dollars with a 1.8% annual increase			\$1,580,537	\$1,909,612	#REF!	#REF!	\$3,931,452	\$1,553,570	\$21,382,872	\$26,867,894	\$7,139,215	\$1,716,469	\$26,017,528	\$34,873,211	\$1,437,108	\$1,334,227	\$28,768,825	\$31,540,160			

2018-2021 TABLE 1

TIP PROJECT LISTING (\$)

	FEDERAL	STATE	LOCAL	TOTAL
2018 SYSTEM PRESERVATION =	\$ 1,580,537	\$ 1,909,612	\$ 4,210,651	\$ 7,700,800
SYSTEM EXPANSION =	\$ -	\$ 412,764	\$ 7,453,191	\$ 7,865,955
TOTALS =	\$ 1,580,537	\$ 2,322,376	\$ 11,663,842	\$ 15,566,755

2019 * SYSTEM PRESERVATION =	\$ 3,931,452	\$ 1,553,570	\$ 8,863,051	\$ 14,348,073
SYSTEM EXPANSION =	\$ -	\$ -	\$ 8,027,667	\$ 8,027,667
TOTALS =	\$ 3,931,452	\$ 1,553,570	\$ 16,890,718	\$ 22,375,740

2020 * SYSTEM PRESERVATION =	\$ 6,628,674	\$ 1,716,469	\$ 11,126,893	\$ 19,472,035
SYSTEM EXPANSION =	\$ 510,541	\$ -	\$ 14,890,635	\$ 15,401,176
TOTALS =	\$ 7,139,215	\$ 1,716,469	\$ 26,017,528	\$ 34,873,211

2021 * SYSTEM PRESERVATION =	\$ 1,437,108	\$ 1,334,227	\$ 21,030,357	\$ 23,801,692
SYSTEM EXPANSION =	\$ -	\$ -	\$ 7,738,468	\$ 7,738,468
TOTALS =	\$ 1,437,108	\$ 1,334,227	\$ 28,768,825	\$ 31,540,160

TOTALS: SYSTEM PRESERVATION =	\$ 13,577,771	\$ 6,513,877	\$ 45,230,951	\$ 65,322,600
SYSTEM EXPANSION =	\$ 510,541	\$ 412,764	\$ 38,109,961	\$ 39,033,266
TOTALS =	\$ 14,088,312	\$ 6,926,641	\$ 83,340,913	\$ 104,355,866

* Amounts show a 1.8% Annual increase to reflect Year of Expenditure Dollars

**WAUSAU MPO AREA
2018 - 2021 TIP PROJECTS
MARATHON COUNTY WI**

Planning Boundary

Project Numbers
Correspond to Table 1

- 2018
- 2019
- 2020
- 2021

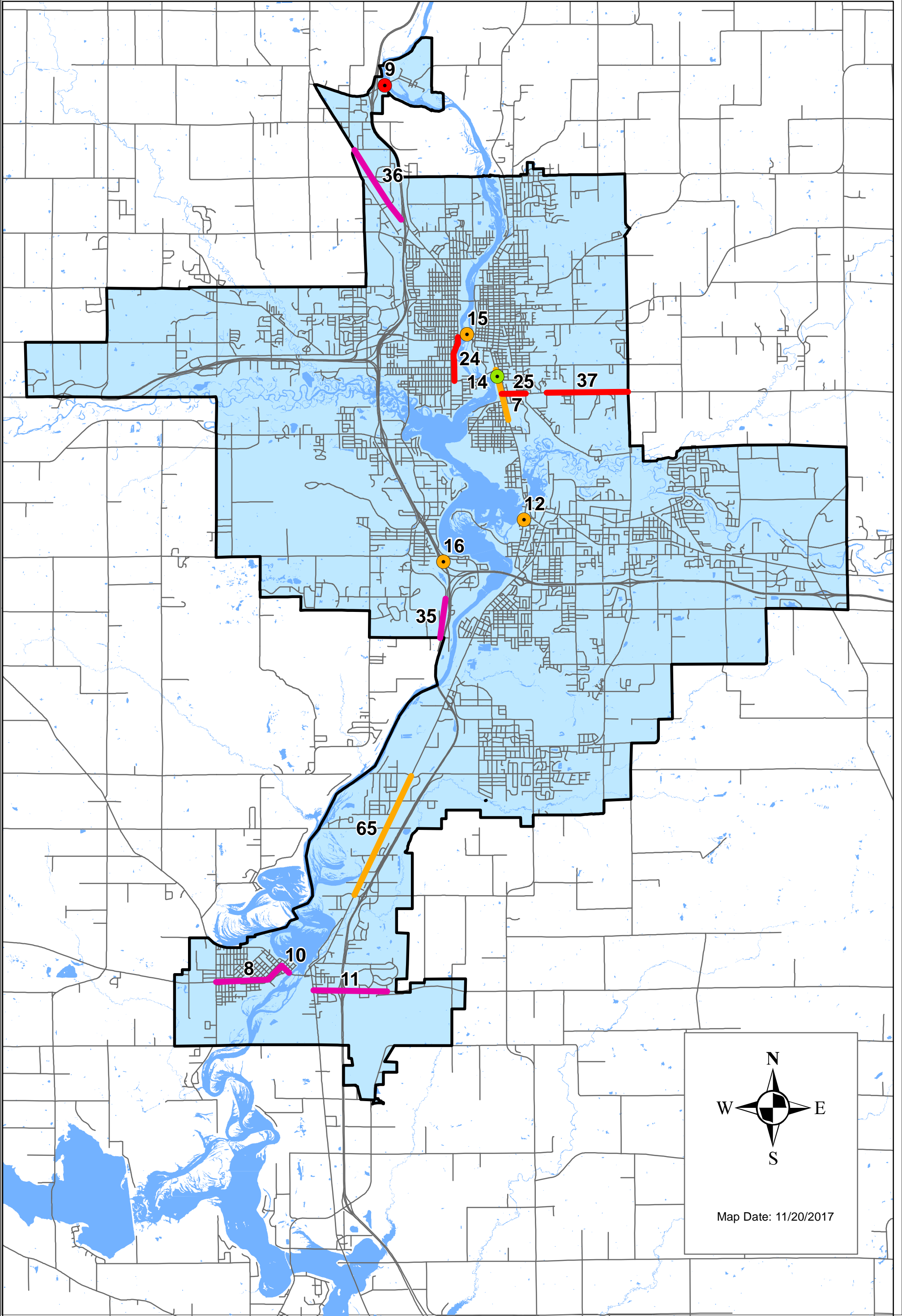


TABLE 2

Assessment of Available Funding for the 2018-2021 Transportation Improvement Program

Funding Source		Programmed Expenditures				Estimated Available Funding			
Agency	Program	2018	2019	2020	2021	2018	2019	2020	2021
Federal Highway	NHPP	\$1,267,577	\$0	\$2,371,472	\$1,183,480	\$1,267,577	\$0	\$2,371,472	\$1,183,480
Administration	STBG	\$0	\$3,681,937	\$492,800	\$0	\$0	\$3,681,937	\$492,800	\$0
	HSIP	\$312,960	\$180,000	\$4,026,862	\$180,000	\$312,960	\$180,000	\$4,026,862	\$180,000
Totals		\$1,580,537	\$3,861,937	\$6,891,134	\$1,363,480	\$1,580,537	\$3,861,937	\$6,891,134	\$1,363,480
Totals	Inflated by 1.8% Annually	\$1,580,537	\$3,931,452	\$7,139,215	\$1,437,108	\$1,580,537	\$3,931,452	\$7,139,215	\$1,437,108

Federal Transit Administration	Section 5307 -- Wausau Urbanized Area	\$818,702	\$189,308	\$1,122,093	\$1,156,021	\$818,702	\$189,308	\$1,122,093	\$1,156,021
	Section 5309	\$156,800	\$75,200	\$446,566	\$0	\$156,800	\$75,200	\$446,566	\$0
	Section 5307 - Other	\$101,488	\$102,433	\$103,355	\$103,355	\$101,488	\$102,433	\$103,355	\$103,355
Totals		\$1,076,990	\$366,941	\$1,672,014	\$1,259,376	\$1,076,990	\$366,941	\$1,672,014	\$1,259,376
Totals	Inflated by 2.0% Annually	\$1,076,990	\$373,546	\$1,732,207	\$1,327,382	\$1,076,990	\$373,546	\$1,732,207	\$1,327,382

Table 3
Implementation Status of 2017-2020 Wausau Urbanized Area Projects
October-17

Number	Implementing Jurisdiction & Location	Project Description	Status of 2017-2020 Projects
1	State of Wisconsin	Statewide Utilities Group Projects 373-18-007	Ongoing
2	State of Wisconsin	OCR Rail-Highway Crossing Safety Group Projects 373-18-008	Ongoing
3	State of Wisconsin	Region Wide Right-of-Way Level of Effort 373-18-009	Ongoing
4	State of Wisconsin	Region Wide Maintenance Group Projects 373-18-010	Ongoing
5	State of Wisconsin	WisDOT Rail-Highway Crossing Safety Group Projects 373-18-011	Ongoing
6	State of Wisconsin	Region Preliminary Engineering Group Projects 373-18-012	Ongoing
7	State of Wisconsin C. of Wausau	Recondition Bus 51 Wausau, Grand Ave Broadway Ave, Townline Rd & Thomas St 373-10-024	Deferred to 2019
8	State of Wisconsin	Resurface STH 153 C. Mosinee, Western, 4th & Main Rangeline Rd - Pine St 373-11-019	Deferred to 2020
9	State of Wisconsin V. of Brokaw	Redeck Wisconsin River Bridge CTH WW 373-14-019	Deferred to 2019
10	State of Wisconsin	Bridge Maintenance Wausau - Wittenberg Various Bridge Maintenance 373-10-018	Completed in 2016
11	State of Wisconsin	Resurface STH 153 C Mosinee, Western Avenue Pine Street to Wisconsin River Bridge 373-11-016	Deferred to 2020
12	State of Wisconsin	Roadway Maintenance STH 153 Mosinee - Elderon Old 51 Road to East View Drive 373-17-018	Deferred to 2020
13	State of Wisconsin	OCR Rail/Highway Safety Program Railroad Crossing Improvement Northern Road City of Schofield, Crossing Signals/Gates 373-16-016	Deferred to 2018

Table 3
Implementation Status of 2017-2020 Wausau Urbanized Area Projects
October-17

Number	Implementing Jurisdiction & Location	Project Description	Status of 2017-2020 Projects
14	State of Wisconsin	Install a Skid-Resistant Surface, STH 29, WB STH 29 Ramp NB USH 51 373-16-017	Deferred to 2020
15	State of Wisconsin	Resurfacing USH 51 Decator Dr. to Lincoln Co. Line 373-17-019	Deferred to 2023
16	State of Wisconsin	Various Culvert Replacements Plainfield - Wausau 373-16-011	Completed in 2017
17	State of Wisconsin C. of Wausau	Bridge Rehabilitation Grand Ave./ Wis Central LTD Bridge (B-37-0100) 373-17-024	Deferred to 2021
18	State of Wisconsin C. of Wausau	Bridge Rehabilitation Scott Street/ WI River Bridge (B-37-203) 373-17-023	Deferred to 2021
19	State of Wisconsin Rib Mountain	Bridge Rehabilitation USH 51/STH 29 Interchange Structures 373-17-022	Deferred to 2018
20	State of Wisconsin Mosinee	Surface Treatment I-39 Bull Jr Creek Bridge 373-17-021	Deferred to 2020
21	State of Wisconsin Mosinee	Roadway Maintenance STH 153 I39 Ramp to I39 Ramp 373-17-020	Deferred to 2020
22	State of Wisconsin Wausau	Bridge Rehabilitation Structure Painting Thomas Street WI River Bridge	Deferred to 2018
23	State of Wisconsin Mosinee	Resurfacing STH 153 STH 107 to Rangeline Road	Deferred to 2018
24	State of Wisconsin Mosinee	Bridge Rehabilitation Regionwide Bridge Project Polymer Overlay STH 153 WI River Bridges	Deferred to 2018
25	City of Mosinee	Construction Wisconsin Riverwoods Trail Chuck's Landing to Rangeline Rd. 373-11-025	Completion in 2016
26	City of Wausau	Reconstruction/Realign Bridge Street Westwood Dr. - 28th Ave	Deferred to 2020

Table 3
Implementation Status of 2017-2020 Wausau Urbanized Area Projects
October-17

Number	Implementing Jurisdiction & Location	Project Description	Status of 2017-2020 Projects
27	City of Wausau	Reconstruction Pine Ridge Blvd Bridge St. - Plaza Dr.	Deferred to 2020
28	City of Wausau	Reconstruction 1st Avenue Thomas St. to Stewart Ave 373-14-023	Deferred to 2019
29	City of Wausau	Reconstruction Townline Road Grand Ave. to Northwestern Ave. 373-14-022	Deferred to 2019
30	City of Wausau	Intersection Improvement 72nd Ave. and Stewart Ave. 373-06-060	Deferred to 2018
31	City of Wausau	Resurface N. 6th Street Riverview Court to Evergreen Road	Deferred to 2021
32	City of Wausau	Reconstruction Thomas St. 17th Ave. to 4th Ave.	Completion in 2017
33	City of Wausau	Reconstruction Thomas St. 4th Ave. to WI River Bridge	Deferred to 2020
34	City of Wausau	Reconstruction Clark Street. 1st Ave to 3rd Ave	Deferred to 2020
35	City of Wausau	Reconstruction Stewart Avenue 48th Ave to 72nd Ave 373-17-013	Deferred to 2021
36	City of Wausau	Reconstruction 2nd Street Bridge St. to E Wausau Avenue 373-17-014	Completion in 2017
37	City of Wausau	Reconstruction 72nd Avenue Stewart Avenue to Packer Drive 373-17-015	Deferred to 2019
38	City of Wausau	Construction Stettin Drive Multi-Use Path Lazy Acres Rd. to 44th Ave 373-18-013	Deferred to 2019
39	Town of Rib Mountain	Construct Rib Mtn Dr (CTH N) Ped Facility CTH N 373-12-016	Completion in 2017

Table 3
Implementation Status of 2017-2020 Wausau Urbanized Area Projects
October-17

Number	Implementing Jurisdiction & Location	Project Description	Status of 2017-2020 Projects
40	Town of Rib Mountain	Resurface Rib Mountain Dr. (CTH N) Cloverland to Morning Glory and Oriole to Robin Lanes 373-14-020	Completion in 2017
41	Town of Rib Mountain	Reconstruction Lilac Avenue Rib Mountain Dr. to Phlox Ln 373-17-016	Deferred to 2020
42	Town of Rib Mountain	Signalization T Rib Mountain, Rib Mountain Drive Morning Glory Lane to CTH NN 373-16-015	Completion in 2017
43	Town of Rib Mountain	Trillium Lane Trail Trillium Lane to Foxglove Road 373-17-017	Deferred to 2020
44	Marathon County	Reconstruction of County Highway K USH 51 to County Line 373-18-014	Deferred to 2020
45	Marathon County	Reconstruction of County Highway N (Townline Rd.) Skyline Dr. to CTH X 373-14-025	Deferred to 2019
46	Village of Weston	Reconstruction Ross Avenue River Bend Road to Kraemer Lane	Deferred to 2019
47	Village of Weston	Construction Northwestern Ave Extention to Sandy Meadow Neighborhood	Deferred to 2021
48	Village of Weston	Construction of streets within SE Quadrant of STH 29 and Camp Phillips Rd north of Weston Ave	Deferred to 2018
49	Village of Weston	Reconstruction Weston Ave. Camp Phillips Rd. to Von Kanel	Deferred to 2019
50	Village of Weston	Reconstruction Weston Ave. Von Kanel to Ryan Rd.	Deferred to 2021
51	Village of Weston	Ryan Street Commerce Drive to Weston Ave.	Deferred to 2021
52	Village of Weston	Reconstruction Weston Ave. Birch St. to Alderson St. 373-04-015	Deferred to 2021

Table 3
Implementation Status of 2017-2020 Wausau Urbanized Area Projects
October-17

Number	Implementing Jurisdiction & Location	Project Description	Status of 2017-2020 Projects
53	Village of Weston	Reconstruction Fuller Street Ross Ave. to Schofield Ave.	Deferred to 2021
54	Village of Weston	Reconstruction of Jelinek Avenue Alderson St. to Coronado St.	Deferred to 2021
55	Village of Weston	Reconstruction Birch St. Weston Ave. to Shorey Ave	Deferred to 2019
56	Village of Weston	Reconstruction Weston Ave. Ryan Street to CTH J	Deferred to 2021
57	Village of Weston	Construction of Bicycle Lanes on Alderson (Weston to Howland), Howland (Alderson to CTH X), and Shorey (Alderson to CTH X)	Deferred to 2020
58	Village of Weston	Reconstruction Camp Phillips Road STH 29 to Weston Ave	Deferred to 2020
59	Village of Weston	Reconstruction Schofield Ave Camp Phillips Road Intersection	Deferred to 2020
60	Village of Weston	Reconstruction Ross Avenue and Camp Phillips Road Intersection	Deferred to 2020
61	Village of Weston	Reconstruction Jelinek Avenue and Camp Phillips Road Intersection	Deferred to 2020
62	Village of Weston	Construction of a new road and Bridge over STH 29 at Municipal Street Extended South	Deferred to 2020
63	Village of Weston	Construct a Road Connection Between Transport Way and Weston Ave	Deferred to 2019
64	Village of Rothschild	Construction of Military Ave Pflieger Street to Bus Hwy 51	Deferred to 2019
65	Village of Rothschild	Construction of Margaret Street Military Ave. to Shorey Ave	Deferred to 2020

Table 3
Implementation Status of 2017-2020 Wausau Urbanized Area Projects
October-17

Number	Implementing Jurisdiction & Location	Project Description	Status of 2017-2020 Projects
66	Village of Rothschild	Reconstruction Becker Street US Bus 51 to Kamke Street	Deferred to 2018
67	Village of Rothschild	Construction of Katherine Street Leroy Avenue to Becher Street	Deferred to 2018
68	Village of Rothschild	Construction of Johnson Street Leroy Avenue to Florence Street	Deferred to 2018
69	City of Schofield	Reconstruction of Grossman Ave the Water Tower to Northern Road	Deferred to 2018
70	City of Schofield	Reconstruction of Grossman Ave Mason Street to the Water Tower	Deferred to 2018
71	City of Schofield	Reonstruction of Alderson Ave. from Grossman Ave to Mallard Lane	Deferred to 2019
72	Village of Kronenwetter	Resurface Old Hwy 51 Happy Hollow Road to Kowalski Road	Deferred to 2020
73	Village of Kronenwetter	Construction of Old Hwy 51 Multi Use Path 373-12-019	Deferred to 2018
74	Village of Kronenwetter	Resurface Old Hwy 51 Village Road to Nelson Road	Deferred to 2019

**APPENDIX A - RESOLUTION ADOPTING
2018-2021 TRANSPORTATION IMPROVEMENT PROGRAM**

MARATHON COUNTY METROPOLITAN PLANNING COMMISSION

RESOLUTION # 7-17

**RESOLUTION ADOPTING THE
2018-2021 TRANSPORTATION IMPROVEMENT PROGRAM
FOR THE WAUSAU METROPOLITAN AREA**

WHEREAS, the Marathon County Metropolitan Planning Commission was designated the Metropolitan Planning Organization for the Wausau Urbanized Area; and

WHEREAS, in compliance with Metropolitan Transportation Planning Regulations by the U.S. Department of Transportation, the Marathon County Conservation, Planning and Zoning Department has developed a four-year transportation improvement program for the Wausau Metropolitan Area; and

WHEREAS, the Transportation Improvement Program identifies transit, pedestrian/bicycle, and highway improvement projects and programs consistent with current transportation plans;

NOW, THEREFORE, BE IT RESOLVED, that the Marathon County Metropolitan Planning Commission endorses the *Long Range Transportation Plan for the Wausau Metropolitan Area* and the *Transit Development Program for the Wausau Area Transit System*, which will be continually updated and maintained as part of the urban transportation planning process;

BE IT FURTHER RESOLVED, that the Marathon County Metropolitan Planning Commission adopts the *2018-2021 Transportation Improvement Program for the Wausau Metropolitan Area*; and

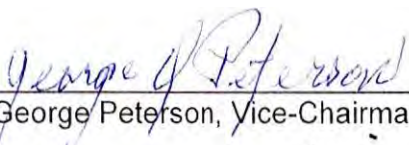
BE IT FURTHER RESOLVED, in accordance with 23 CFR 450.336, the Wausau Metropolitan Planning Organization for the Wausau, WI urbanized area hereby certifies that the metropolitan transportation planning process is addressing the major issues facing the metropolitan planning area and is being conducted in accordance with all applicable requirements of:

1. 23 U.S.C. 134 and 49 U.S.C. 5303, and this subpart;
2. Sections 174 and 176 (c) and (d) of the Clean Air Act as amended (42 U.S.C. 7504, 7506 (c) and (d)) and 40 CFR part 93;
3. Title VI of the Civil Rights Act of 1964, as amended (42 USC 2000d-1) and 49 CFR part 21;
4. 49 USC 5332, prohibiting discrimination on the basis of race, color, creed, national origin, sex, or age in employment or business opportunity;

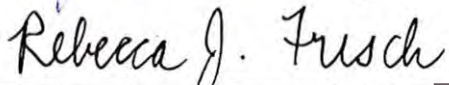
5. Section 1101(b) of the Fixing America's Surface Transportation (FAST Act) (Pub. L. 114-357) and 49 CFR Part 26 regarding the involvement of disadvantaged business enterprises in the US DOT funded projects;
6. 23 CFR part 230, regarding the implementation of an equal employment opportunity program on Federal and Federal-aid highway construction contracts;
7. The provisions of the Americans with Disabilities Act of 1990 (42 U.S.C. 12101 *et seq.*) and 49 CFR Parts 27, 37, and 38;
8. The Older Americans Act, as amended (42 U.S.C. 6101, prohibiting discrimination on the basis of age in programs or activities receiving Federal financial assistance;
9. Section 324 of title 23, U.S.C. regarding the prohibition of discrimination based on gender; and
10. Section 504 of the Rehabilitation Act of 1973 (29 U.S.C. 794) and 49 CFR 27 regarding discrimination against individuals with disabilities.

BE IT FURTHER RESOLVED, that the Marathon County Metropolitan Planning Commission certifies that the TIP contains only projects that are consistent with the transportation plan for the urban area and recommends that this document be submitted to the appropriate federal and state agencies for approval.

Dated this 14th day of November 2017



 George Peterson, Vice-Chairman



 Rebecca Frisch, Commission Secretary
 Director, Marathon County Conservation,
 Planning and Zoning Department

**APPENDIX B - PRIVATIZATION EFFORTS AND
AREA TRANSPORTATION PROVIDERS**

PRIVATIZATION EFFORTS

The Wausau MPO adopted a Privatization Policy in 1986. The policy provides private enterprises with the opportunity to participate in the process of transit planning and delivery of services. In compliance with the directives of the policy, the Wausau MPO maintains a record of all transportation providers in the area. The record of transportation providers in the area is updated annually. A copy of the draft Transportation Improvement Program is provided to the transportation providers in the area for their review. The local transportation providers are invited to participate in the delivery of transportation services in the Wausau area. The Wausau Area Transit System (d/b/a. Metro Ride) follows the policy of involving private operators in the process of major transportation planning and service delivery.

In 1991, Metro Ride first contracted with a private transportation provider for paratransit services. WATS then developed the Complementary Paratransit Plan for the Wausau Area Transit System in 1992 based on the Americans with Disabilities Act of 1990 (ADA). Metro Ride has subsequently developed an annual update to the Complementary Paratransit Plan. Metro Ride contacts private transportation providers to solicit comment on the update of the plan.

In 2012, the Wausau MPO and Metro Ride developed the Transit Development Program (TDP) for the Wausau metropolitan area. This updated plan identified the need for the same service expansion options.

In 2012, Marathon County through North Central Health Care and Metro Ride dissolved their joint contract with a private provider for the nonambulatory services in the County and within the MPO area with each entity taking part of the services "in house". Metro Ride provides the Paratransit services in their service area and North Central Health Care provides for the elderly and disabled transportation services in the County and metro area.

A listing of the Private Providers and the stakeholders involved in providing transportation services in the area are listed below:

PRIVATE TRANSPORTATION PROVIDERS

2018

K-K Way Transportation
1323 S. 11th Ave.
Wausau, WI 54401

Theren Afh
514 Sherman St.
Wausau WI 54401

First Student
6206 Alderson
Schofield WI 54476

A-1 Wausau Cab
1412 E. Wausau Ave
Wausau WI 54403

Community Industries Corp.
1027 S. 17th Ave.
Wausau WI 54401

NCTI
Vision & Hearing Program
1000 Campus Drive
Wausau WI 54401

ACC Medlink
(888) 279-6118

Northwestern Transportation
1235 Junction St.
Wausau WI 54403

North Central Health Care
1100 Lake View Drive
Wausau WI 54403

Medical Transport Services
(727) 203-4877

Ames Transport
3701 Pine Siskin Ln
Wausau WI 54401

Taxi Time
1709 Merrill Ave
Wausau WI 54401

American Elite Transportation
5815 Bus 51 S.
Schofield WI 54476

Abbyvans Inc
W5621 Todd Road
Neillsville WI 54456

Wausau Taxi
104 N 10th Ave
Wausau WI 54401

AK Transport, LLC
3811 Schoonover Rd.
Schofield WI 54476

All American Taxi
1705 Merrill Avenue
Wausau WI 54401

Lamers Bus Lines Inc
2415 Trailwood Ln
Rothschild WI 54474

Northwoods Cab Wausau
5207 Scott Street
Wausau WI 54403

B&D Motors
300 S Park St.
Merrill, WI 54452

Metro Cab of Wausau
4013 Central Dr.
Wausau WI 54401

Metro Cab of Wausau
4013 Central Dr.
Wausau WI 54401

Badger Taxis
PO Box 27
Wausau WI 54402

Opportunity Inc.
740 N Third Street
Wausau WI 54403

United Taxi
1705 Merrill Dr.
Wausau WI 54401

Burnett Transit
B3866 State Highway 13
Spencer WI 54449

Progressive Travel Inc
B3872 Hwy 13
Spencer WI 54449

A1 Cab & Delivery
942 Washington St.
Wausau WI 54403

Krug Bus Service
549 Billings Avenue
Medford WI 54451

Div of Vocational Rehab
Marathon County Job Center
364 Grand Avenue
Wausau WI 54403

Executive Cab of Wausau
100 Grand Ave
Wausau WI 54403

Wausau Limousine Service
4404 Rib Mountain Dr.
Wausau WI 54401

Ulrich Bus Service Inc
357 N 3rd Ave
Stratford WI 54484

Wausau Taxicabs Inc
PO Box 27
Wausau WI 54402-0027

Wausau Area Transit System
d/b/a Metro Ride
420 Plumer St
Wausau WI 54403

Wirsbinski Bus Service Inc
558 Fox Road
Mosinee WI 54455

APPENDIX C - PUBLIC PARTICIPATION

PUBLIC PARTICIPATION

The development of the *2018-2021 Transportation Improvement Program for the Wausau Metropolitan Area* was based on a public participation process. The Wausau MPO has developed a strategy to solicit public participation and has documented the process. Please refer to the *Public Participation Plan for its Transportation Plans and Programs* for more information. All comments on the draft TIP were considered before the final 2018-2021 TIP was adopted by the Marathon County Metropolitan Planning Commission.

The Marathon County Metropolitan Planning Commission, the Wausau MPO Technical Advisory Committee, County Health and Social Services Departments, the transportation providers listed in Appendix B, have all been notified of the draft 2018-2021 TIP availability on the MPO website. The draft TIP was available for public review at the Marathon County Conservation, Planning and Zoning Department and on the Marathon County website for 30 days before its adoption. Public review of the draft TIP was solicited in advertisements placed in the *Wausau Daily Herald* on October 10, 2017 and October 17, 2017.

A public informational meeting on the draft 2018-20201 TIP was held on October 24, 2017. The meeting was advertised in the *Wausau Daily Herald* on October 17, 2017. Persons receiving the draft TIPs also were sent meeting notices on the public informational meeting. Copies of the advertisements in the *Wausau Daily Herald* and a copy of the flyer announcing the public informational meeting are included on the following pages. The notices and comment opportunities can also be found on the MPO website.

In 2005, Marathon County established a Transportation Coordinating Committee (TCC) to review and discuss the non-ambulatory transportation services in the county. This provides an additional forum for the dissemination of information in the area.

The Wausau MPO provides accessible formats of the draft TIP on the MPO and Marathon County websites, directly to providers, and those upon request, and holds public meetings in accessible buildings. Please refer to the *Public Participation Plan for its Transportation Plans and Program* for additional information on the approach to meeting the requirements of the Americans with Disabilities Act of 1990.

WisDOT relies on the public involvement process conducted by the MPO in the development of their TIP, to satisfy the Federal Transit Administration program and planning requirements, as established for the Section 5307 and 5309 programs.

All substantive comments received during the public comment period were incorporated into the document. There were no comments received at the informational meeting held on October 24, 2017 to incorporate into the document.

The Annual Listing of Obligated Funds is provided by the Wausau MPO on the Wausau MPO and Marathon County website in the Transportation section of the Conservation, Planning and Zoning Department page. Access to the website can be reached at WausauMPO.org

ENVIRONMENTAL JUSTICE

Taken in whole, the projects in the 2018-2021 Transportation Improvement Program together with the other public and privately funded transportation improvements and services provided in the Wausau urbanized area do not impose disproportionately high and adverse impacts on minority populations and low income populations or any other population groups. Furthermore, the benefits of the transportation services and improvements provided are reasonably distributed to serve the needs of all populations in the area. Although the minority and low income populations will not be adversely affected by these projects, the Metro Ride transit system will need to review its routes that will potentially be disrupted by some TIP projects. These statements are based on the analysis summarized by Maps 3 and 4. Map 3 illustrates the 2018-2021 TIP projects in relation to the minority population groups within the Wausau Area. Map 4 illustrates the 2018-2021 TIP projects in relation to the Transit routes within the Wausau Area.

Published in the *Wausau Daily Herald* on the dates shown.

NOTICE OF AVAILABILITY

Published:

October 10, 2017

NOTICE OF AVAILABILITY

The Wausau Metropolitan Planning Organization (MPO) announces that the draft 2018-2021 Transportation Improvement Program (TIP) for the Wausau Metropolitan Area is available for public review at the Marathon County Conservation, Planning and Zoning Department, 210 River Drive, Wausau, WI, and at www.wausaumpo.org. The plan is available for public review and comment from October 10, 2017 to November 10, 2017. A public informational meeting on the draft TIP will be held from 4:30 p.m. to 6:00 p.m. on October 24, 2017 at the Marathon County Conservation, Planning, and Zoning Department, 210 River Drive, Wausau, WI. Written or oral comments may be presented at the public informational meeting, and written comments will be accepted until November 10, 2017. Any person planning to review the document or attend this meeting who needs some type of special accommodation to participate should call the County Clerk's Office at 261-1500. Comments regarding the document may be mailed to David Mack, MPO Director, 210 River Drive, Wausau, WI 54403-5449, e-mailed to Dave.Mack@co.marathon.wi.us, or telephone (715) 261-6043.

NOTICE OF PUBLIC INFORMATIONAL MEETING

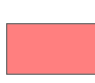
Published:


October 17, 2017

NOTICE OF PUBLIC INFORMATIONAL MEETING









The Marathon County Metropolitan Planning Commission announces that a public informational meeting on the draft 2018-2021 Transportation Improvement Program (TIP) for the Wausau Metropolitan Planning Organization (MPO) will be held from 4:30 p.m. to 6:00 p.m. on Tuesday, October 24, 2017 at the Marathon County Conservation, Planning, and Zoning Department, 210 River Drive, Wausau, WI. Written or oral comments may be presented at the public informational meeting, and written comments will be accepted until November 10, 2017. The draft plan is available at the Marathon County Conservation, Planning and Zoning Department, 210 River Drive, Wausau, WI, and at www.wausaumpo.org. Any person planning to attend this meeting who needs some type of special accommodation to participate should call the County Clerk's Office at 261-1500. Comments regarding the document may be mailed to David Mack, Wausau MPO Director, 210 River Drive, Wausau, WI 54403-5449 or e-mailed to Dave.Mack@co.marathon.wi.us, or telephone (715) 261-6043.

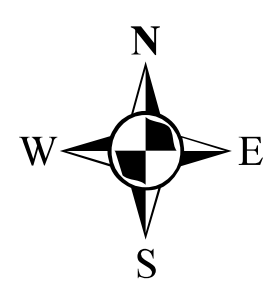
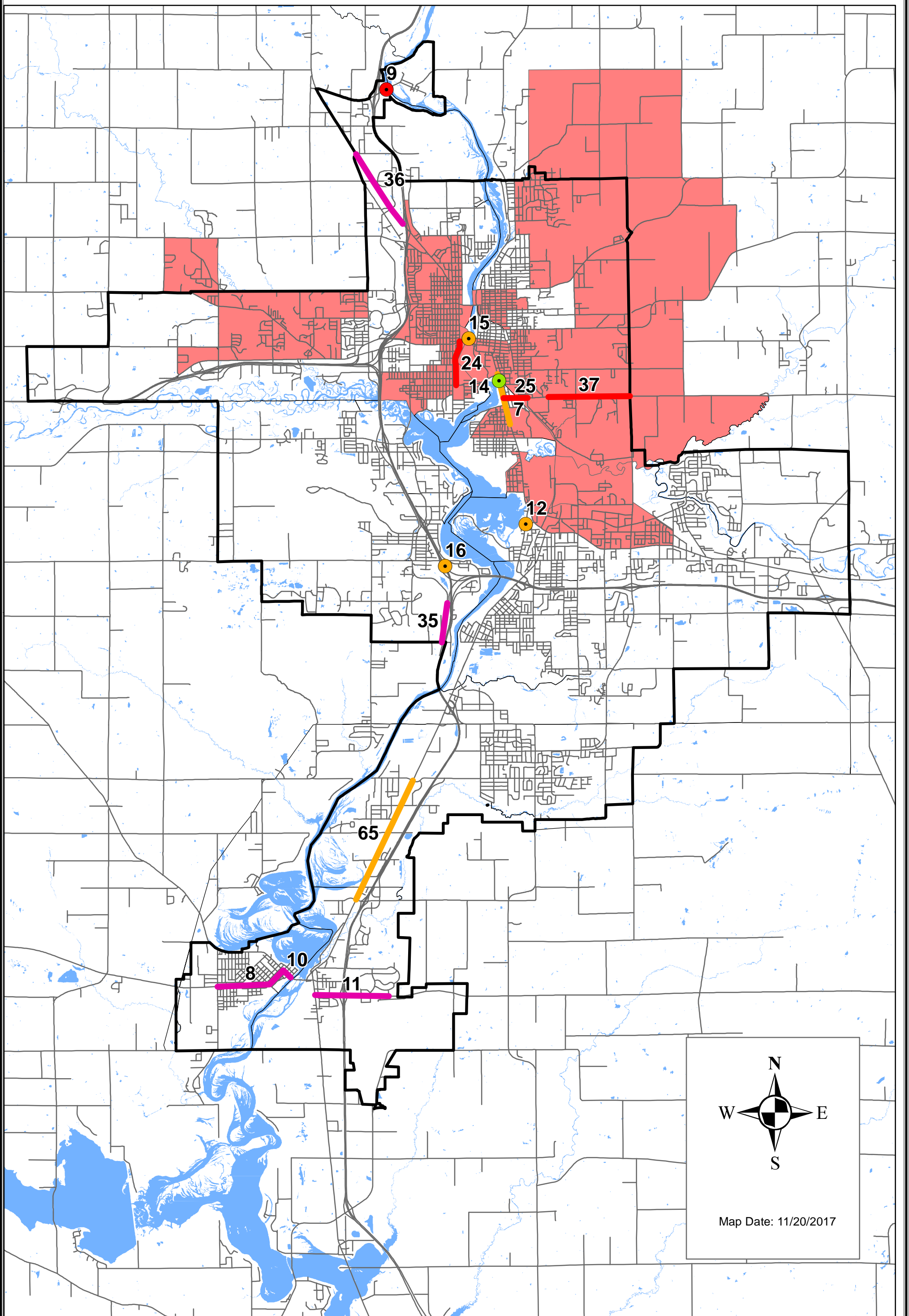
**WAUSAU MPO AREA
2018 - 2021 TIP PROJECTS
MARATHON COUNTY WI**

 > 10% Minority Population
by Census Block Group

 Planning Boundary


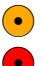




Project Numbers
Found On Table 1

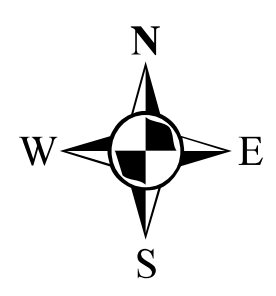
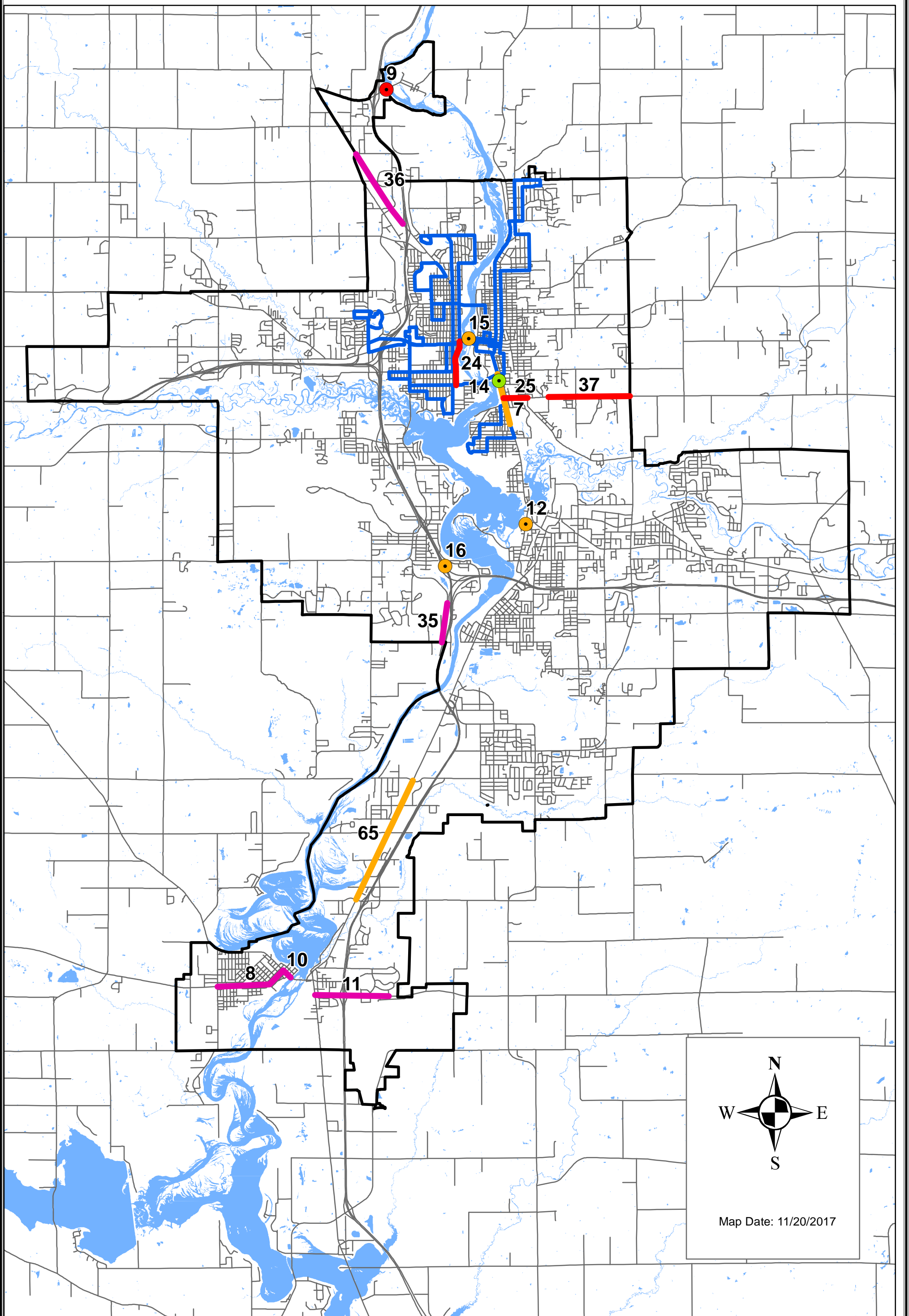
		2018
		2019
		2020
		2021



Map Date: 11/20/2017

**WAUSAU MPO AREA
2018 - 2021 TIP PROJECTS
MARATHON COUNTY WI**

	Planning Boundary		2018
	Metro Ride Bus Lines		2019
	Project Numbers Found On Table 1		2020
			2021



Map Date: 11/20/2017

**APPENDIX D –
ILLUSTRATIVE OR OTHER
POTENTIAL PROJECTS**

ILLUSTRATIVE OR OTHER POTENTIAL PROJECTS

The following list of illustrative or potential projects is included in this document for informational purposes only. In the *2018-2021 Transportation Improvement Program*, projects are reviewed with the guidance of the Long Range Transportation Plan. Projects in this list either do not have dollar amounts, set times for implementation, or are being planned for beyond the four year time line which is needed to be scheduled in Table 1. These projects may be moved forward into the four year TIP Table 1 if funding becomes available. This list is not in any priority order.

Reconstruction of STH 52 and CTH W intersection (6th St. and Wausau Ave.) Unknown costs & time frame. (City of Wausau)

Reconstruction of Rangeline Road from STH 153 to Moon Road. Unknown costs & time frame. (City of Mosinee)

Resurface the Mountain Bay Trail from the trailhead to CTH J. Unknown costs & time frame. (Village of Weston)

Construction of Kowalski Road from East Termini to Creek Road. Unknown costs & time frame. (Village of Kronenwetter)

Reconstruction of Ross Ave. from Bus. Hwy 51 to Metro Dr. Unknown costs & time frame. (City of Schofield)

Construction of Kowalski Road from Kronenwetter Dr. to Tower Road. Unknown costs & time frame. (Village of Kronenwetter)

The preparation of this report has been financed in part through grant[s] from the Federal Highway Administration and Federal Transit Administration, U.S. Department of Transportation, under the Metropolitan Planning Program, Section 104(f) of Title 23, U.S. Code. The contents of this report do not necessarily reflect the official views or policy of the U.S. Department of Transportation.